



YOSHIMURA

RESEARCH&DEVELOPMENT OF AMERICA, INC.

5420 DANIELS STREET STE A, CHINO CA., 91710 · (800) 634-9166 · (909) 628-4722 · FAX (909) 591-2198

www.yoshimura-rd.com

RACE SERIES

Qualified Manufacturer Declared "Modified Part"

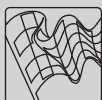
2022

Suzuki Hayabusa

11211AP520 (SS/CF)

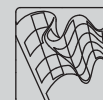
AT2 Full System

FOR CLOSED COURSE COMPETITION ONLY; NOT INTENDED FOR STREET USE



Race Series systems are:

- NOT CARB/EPA tail-pipe emissions compliant.
- NOT street legal.
- For "Closed Course Competition" use only.

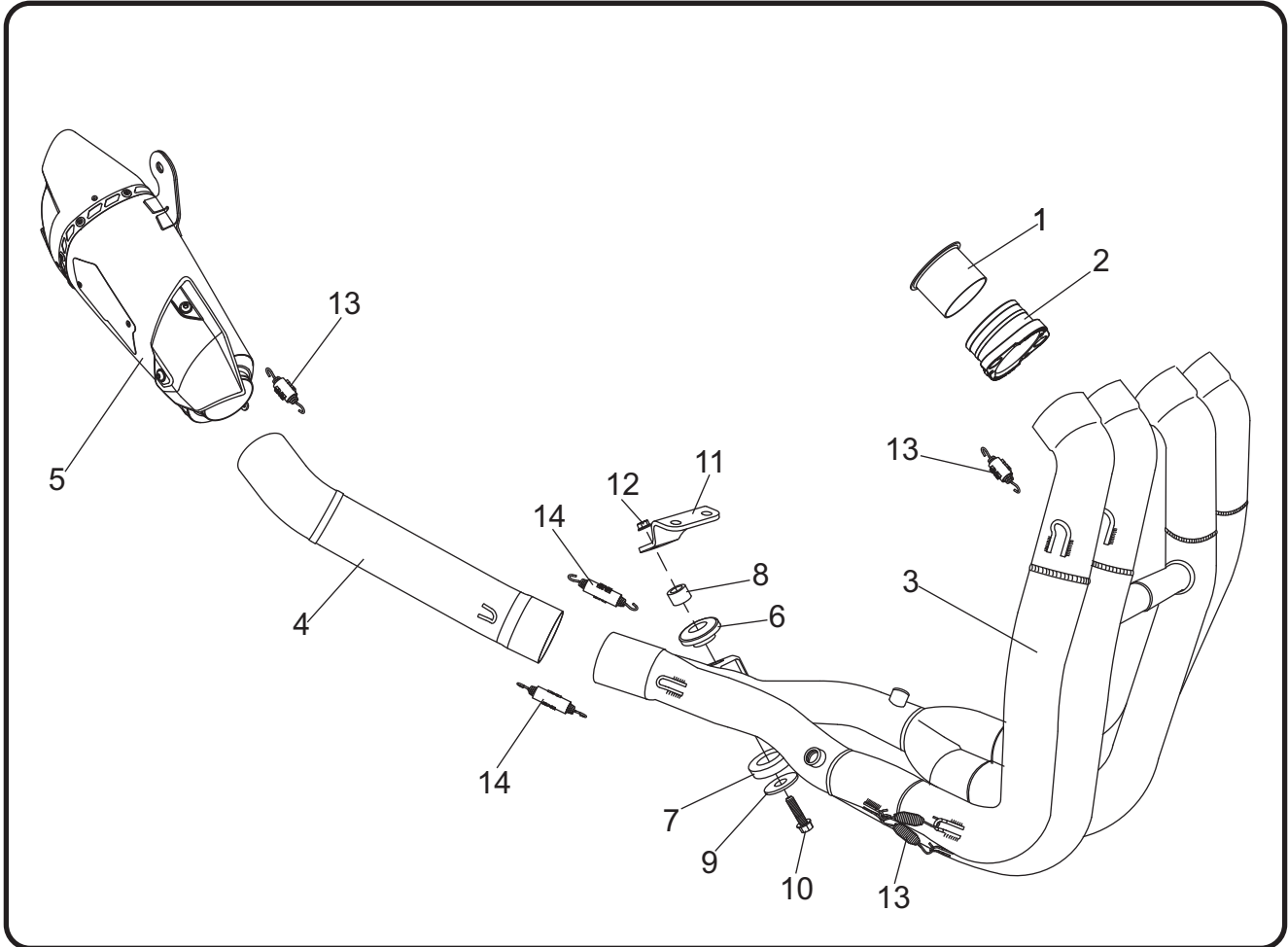


You must know how to remove and replace your stock exhaust in order to install this product otherwise have it installed by a professional mechanic. Keep all stock parts from your existing system as some components may be necessary to install your new Yoshimura exhaust depending on the application. Read through all instructions before beginning installation. Exhaust system can be extremely hot. Let motorcycle cool down before beginning installation. Always wear hand and eye protection and take precautionary measures to avoid injury.



NOTE: IN THE STATE OF CALIFORNIA, IT IS ILLEGAL TO MODIFY THE EMISSION CONTROL SYSTEM, WHICH INCLUDES THE CARBURETORS OF ANY VEHICLE.

Assembly Diagram



No.	Item	Description	Qty.
1	1118SMT	Manifold	4
2	1118SDY-1	Flange	4
3	1121-404-1D-1	Header	1
4	11211-421D	Tailpipe	1
5	11211AP520-RMA	Muffler Assembly	1
6	Z1031	Rubber Grommet Collar	1
7	Z1030	Rubber Grommet Washer	1
8	Z1031-SP	Grommet Spacer Insert	1
9	8X38WSH	8mm x 38mm Washer	1
10	M8X30H	8mm x 30mm Flanged Hex Head Bolt	1
11	11211-BRKT	Header Chassis Mount Bracket	1
12	8MMNUT	8mm Flange Nut	1
13	RACE-SPS-1	Medium Exhaust Spring	11
14	RACE-SPL-1	Long Exhaust Spring	2
**	ST-200	Spring Puller Tool	1
**	17100	Sticker Sheet	1

** Not Shown on diagram.

CAUTION: Exhaust system can be extremely hot. Let motorcycle cool down before beginning installation. Always wear hand and eye protection and take precautionary measures to avoid injury.

WARNING: Always properly support vehicle with a stand and/or lift when servicing or performing any work. Unstable vehicles may present dangerous conditions and may cause property damage and/or personal injury.

NOTE: Read through all instructions before beginning installation.

Removal

1. Remove left and right muffler heatshields to access muffler exhaust clamps.
2. Loosen left and right stock muffler exhaust clamps.
3. While securely supporting the stock muffler assembly, remove the muffler mount bolt and carefully remove the stock muffler assembly.
4. Repeat steps for opposite side muffler.
5. Follow steps in Factory Service Manual to remove left and right fairings.
6. Remove left and right O2 sensors in stock header.
7. Remove lower oil cooler bracket.
8. While securely supporting the stock header assembly, remove header bolts and header chassis mount bolts and carefully remove the stock header assembly.

Note: Exhaust port gaskets will not be used with the Yoshimura full-system. Remove from cylinder head.

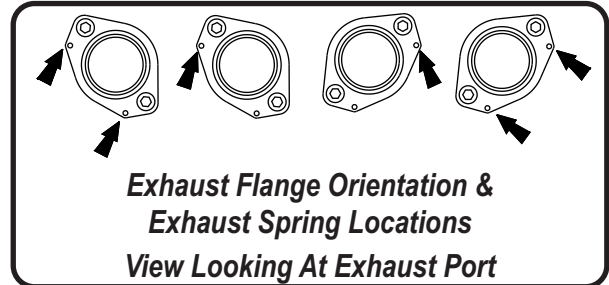
9. Remove the two bolts securing header chassis mount bracket to frame and remove bracket.

Note: The two header chassis mount bracket bolts will be re-used. Set aside for installation of Yoshimura bracket.

Installation

1. Install (No. 11) 11211-BRKT, header chassis mount bracket to frame using the stock bolts. **Do not torque at this time.**
2. Install manifolds and flanges onto exhaust ports and secure using the stock header bolts. **Do not torque at this time.**

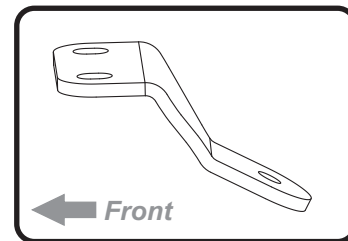
Note: It is recommended to hook springs onto flange as it may be difficult to access once header is installed.



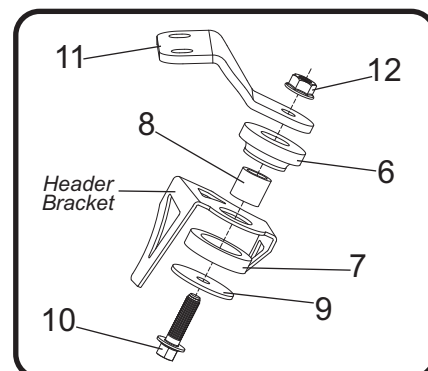
3. Assemble header legs and collector. Install header by slipping onto manifold one header leg at a time. Hook springs onto spring hook on header legs.

Note: Ensure header is fully seated to manifolds by gently tapping header legs with a plastic/rubber mallet.

4. Install (No. 11) 11211-BRKT, header chassis mount bracket using the stock bolts. **Do not torque bolts at this time.**

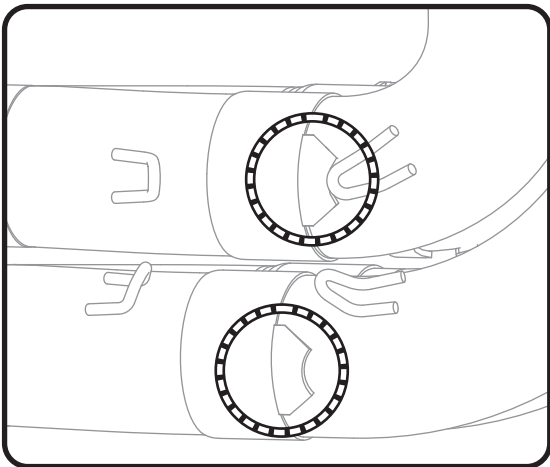


5. Assemble and secure header bracket to chassis mount bracket as shown. Torque bolt to 23 Nm, 17 ft-lb (2.3 kg-m).



6. Torque header chassis mount bracket bolt to factory specifications.
7. Torque header flange bolts to factory specifications.
8. Install (No. 4) *11211-421D*, tailpipe onto (No. 3) *1121-404-1D-1*, header outlet.
9. Install (No. 5) *11211AP520-RMA*, muffler onto (No. 4) *11211-421D*, tailpipe outlet and align muffler bracket to the backside of muffler mount. Secure using the stock muffler mount bolt and nut. Torque muffler mount bolt to factory specifications.
10. Install (No. 13) *RACE-SPS-1*, medium exhaust spring between muffler and tailpipe.
11. Install (No. 14) *RACE-SPL-1*, long exhaust springs between tailpipe and header.
12. Install (No. 13) *RACE-SPS-1*, medium exhaust springs between header legs and collector.

Note: The stopper tags on the header legs should be contacting the collector. If necessary, gently tap with a rubber/plastic mallet to fully seat.



13. Re-install oil cooler bracket using opposite steps of removal.
14. Re-install stock O2 sensor into Yoshimura header. Torque to factory specifications.
15. Re-install left and right fairings using opposite steps of removal.

16. Before starting vehicle, check for proper clearance between new exhaust system and rear suspension (i.e. tire, swingarm, brakes, rear shock, and etc.) If any problem is found, please carefully follow through the installation steps again. If problem still persists, please call Yoshimura Tech Department at (800) 634-9166 / in CA (909) 628-4722.

17. It is recommended that the muffler and tailpipe be wiped down with rubbing alcohol to remove oil and fingerprints. This will help prevent tarnishing of the finish after the exhaust is heated up.

Note: After starting motorcycle, it is normal for new exhaust system and muffler to emit smoke until oil residue burns off.

Works Finish Care & Maintenance

Before starting vehicle, clean pipe thoroughly using a soft cloth and rubbing alcohol to remove any oil and finger prints.

The color of the exhaust will change once the system has gone through a heat cycle of 15 minutes or more. Color will vary depending on lean/rich conditions.

Clean using a soft cloth and soap. Do not use abrasive materials as it will scratch the surface.

Surface reconditioning services are available to remove scratches and undesirable discoloration due to extreme heat. Contact Yoshimura Tech Department at (800) 634-9166 / in CA (909) 628-4722 for more information.