



YOSHIMURA

RESEARCH&DEVELOPMENT OF AMERICA, INC.

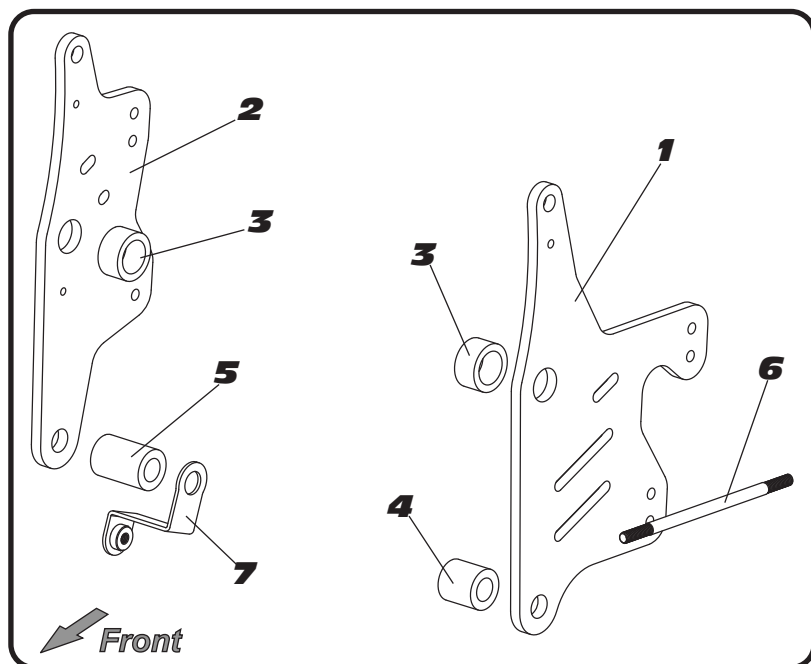
5420 DANIELS STREET STE A, CHINO CALIF. 91786 · (800) 634-9166 · (909) 628-4722 · FAX (909) 591-2198

www.yoshimura-rd.com

Adjustable Rearset Bracket Kit

**Kawasaki
Ninja 400**

500BG147100



IMPORTANT

Brake line replacement required for ABS models.

For ABS models, it is required to replace the rear brake hardline leading up to the ABS module. Goodridge rear brake line is available through Yoshimura for the perfect OEM fit and finish. (Sold Separately)

Yoshimura Part No.

YOSH-14710-CH

Rear Kit w/ Chrome Plated Mild Steel Hardware

	DESCRIPTION	QTY	PART #
1	Left Rearset Bracket	1	500BG147100L
2	Right Rearset Bracket	1	500BG147100R
3	Upper Aluminum Spacer	2	14710-SPCR-1
4	Lower Left Aluminum Spacer	1	14710-SPCR-3
5	Lower Right Aluminum Spacer	1	14710-SPCR-2
6	Shift Link Rod	1	R-K8SR130SS
7	Fairing Bracket	1	14710-FBKT
**	Thread Lock Adhesive	1	R-K880ND
**	Yoshimura Sticker	1	17029

Adjustable Positions:

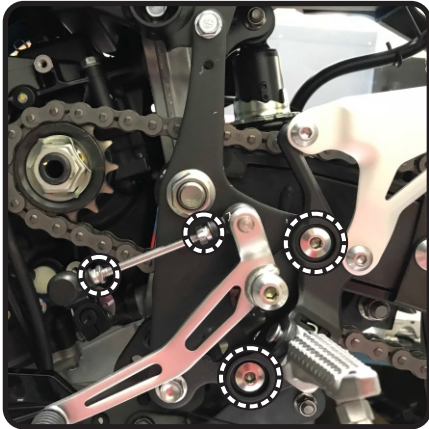
Upper Position	Back	40mm
	Up	25mm
Lower Position	Back	40mm
	Up	10mm

Installation

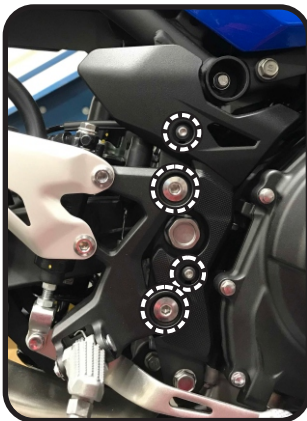
1. Remove the three left side swingarm bracket plate cover screw and remove cover.



2. Remove the stock shift rod by loosening the shift rod locknuts. Remove the two bolts securing left footpeg assembly to left swingarm bracket plate.



3. Remove the two right side swingarm bracket plate cover screws and remove cover. Remove the two bolts securing right footpeg assembly to right swingarm bracket plate.



4. It is required to remove the swingarm bolt to replace left and right swingarm bracket plates. Place motorcycle in front wheel chock to center upright. Place floor jack under oil pan to lightly support engine and to unload rear suspension to ease removal of the swingarm bolt.

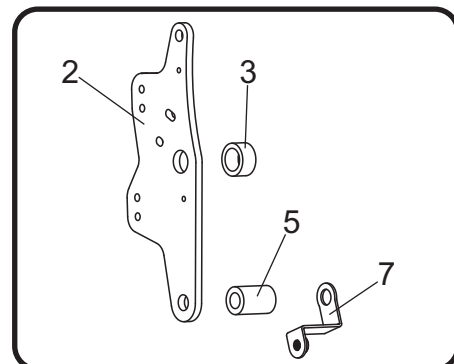
5. Remove the swingarm nut from left side and remove the upper and lower swingarm bracket plate bolt. Remove left side swingarm bracket plate.



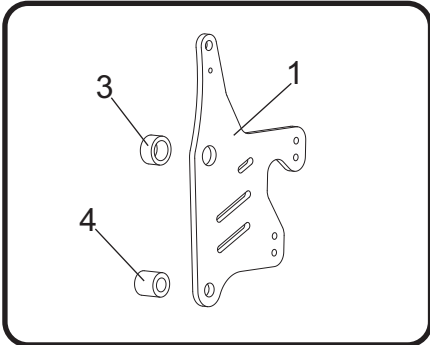
6. Remove right side lower fairing bolt and remove swingarm bolt from right side. Remove the upper and lower swingarm bracket plate bolts and remove swingarm bracket plate.



7. Install (No. 2) 500BG147100R, right reaset bracket using the stock swingarm bolt and (No. 3) 14710-SPCR-1, upper aluminum spacer. Install upper and lower swingarm bracket plate bolt and (No. 5) 14710-SPCR-2, lower right aluminum spacer and (No. 7) 14710-FBKT, fairing bracket.



8. Install (No. 1) *500BG147100L*, left rearset bracket using the stock swingarm nut. Install upper and lower swingarm bracket bolt, (No. 3) *14710-SPCR-1*, upper aluminum spacer, and (No. 4) *14710-SPCR-3*, lower left aluminum spacer.



9. Torque swingarm bolt and nut to factory specification. Torque left and right upper and lower swingarm bracket plate bolts to factory specification.
10. Apply supplied thread lock to the stock footpeg bolts. Install left footpeg bracket to Yoshimura left rearset bracket. Torque to factory specification. Install (No. 6) *R-K8SR130SS*, shift rod using the stock shift rod lock nuts. Adjust shift pedal to desirable position and torque nuts to factory specification. Re-install the swingarm bracket plate cover using the three stock bolts.

Note: The stock footpeg bracket can be installed in two positions. See chart on front page for technical specifications.



11. Apply thread lock to the stock footpeg bolts. Install right footpeg bracket to Yoshimura right rearset bracket. Torque to factory specification. Re-install right side swingarm bracket plate cover using the stock bolts. Secure right side fairing to fairing bracket using the stock bolt. Torque to factory specification.

Note: For ABS models, follow factory service manual for rear brake line replacement and proper brake bleeding procedure. Test and inspect brake system prior to riding.

