



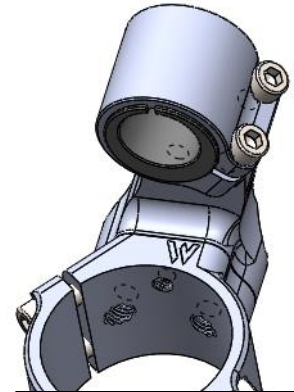
Side Mount Adjustable Riser Installation Instructions

WARNING Installation and use of some Woodcraft Technologies, Inc. products will change the response of the motorcycle to rider control inputs. Failure of the rider to adapt to these changes may cause loss of control, and serious injury or death. Improper installation, and/or failure to comply with all warnings and instructions may cause loss of control and serious injury or death. **DO NOT INSTALL OR USE ANY WOODCRAFT TECHNOLOGIES, INC. PRODUCTS IF YOU ARE UNABLE TO DO SO IN COMPLIANCE WITH ALL INSTRUCTIONS AND WARNINGS. SEEK THE ASSISTANCE OF AN EXPERIENCED TECHNICIAN.**

- 1) Completely remove your stock grips, controls and clipon assembly.

Handlebar Preparation

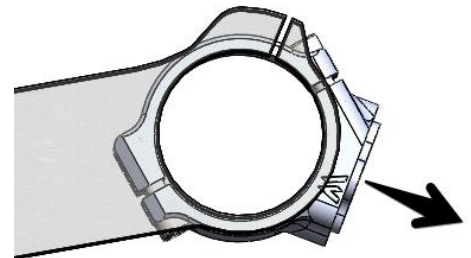
- 2) Most OEM controls have anti rotation pins, which require you to drill holes in the Woodcraft handlebars. Measure the diameter of the holes in the stock handlebars and select the appropriate drill bit.
- 3) Slide the controls loosely into place on the bar, noting that the grips should end roughly where the plastic end plug meets the aluminum. If you plan to use Woodcraft Lever Guards, please leave 0.675 inches of bar space outside the grip. Mark the location for the anti rotation pins and drill. Test the control assemblies to be sure they are able to be securely tightened and everything moves freely.



The right base clamp will have the "W" on the right side

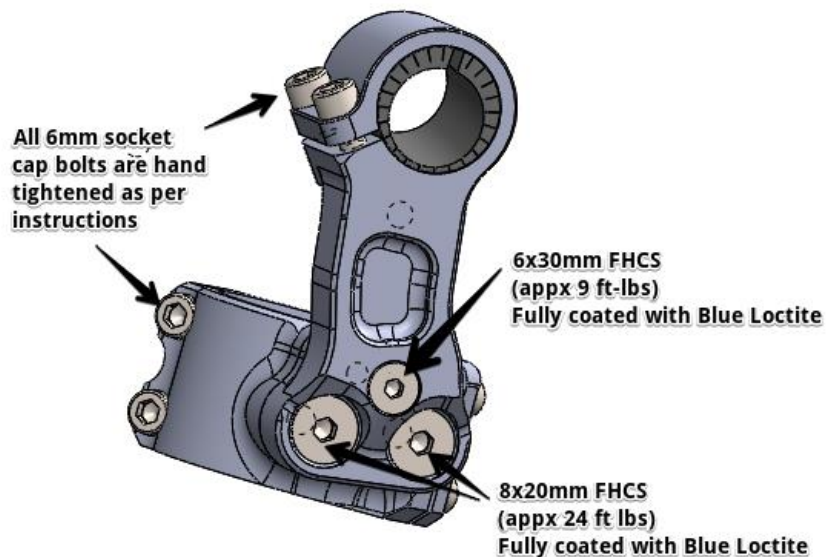
Base Clamp Installation

- 4) The riser base clamp is 2 pieces to allow you to place it under the triple clamp without disassembling your front end. Install the four 6x20mm socket cap clamping bolts on each clipon and secure the base on the fork tube, finger tight.
- 5) Orient the base clamp so that the flat face is roughly perpendicular to the angle that you want your handlebar.
- 6) Be sure that the gap between the halves of the base clamp is even on both sides.



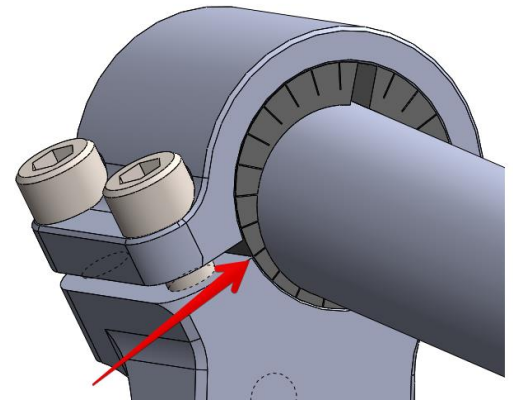
Riser Installation

- 7) **VERY IMPORTANT:** Use loctite on all three of the countersunk bolts on each side when securing the riser to the base of the clipon. Allow the loctite to dry and fully set before use.
- 8) Torque the three bolts to the specifications shown at the right.



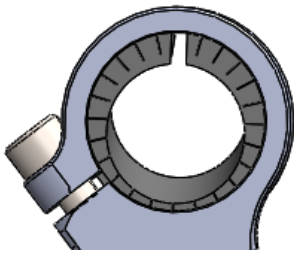
Adjustable insert installation and adjustment

- 9) Install the adjustable insert so the flange is on the inside and the indexing lines are facing the outside of the riser.
- 10) Slide the handlebar through the insert until the plastic end cap fully protrudes through the inside of the handlebar. The plastic is sometimes slightly oversized and as such you may need to “tap” the bar through with a soft mallet.
- 12) Sit on the motorcycle and rotate the inserts until you have the down angle and pullback angle desired. With the base clamps still finger tight you should have a large range of adjustment. Match the position of the insert relative to the bottom edge of the split in the clipon on both sides.

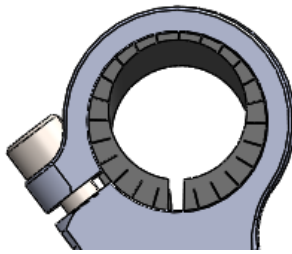


The adjustment is infinite, but here are 4 example positions for angle and sweep:

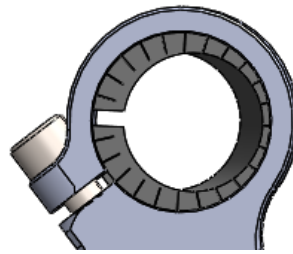
7 Degrees Down



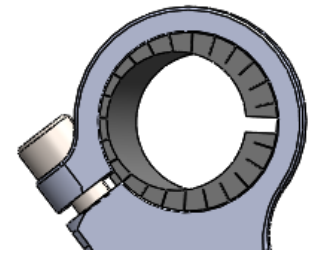
7 Degrees Up



**0 Degrees Rise
7 Degrees Forward**



**0 Degrees Rise
7 Degrees Back**



NOTE: These are not model specific clipons.

You must check very carefully for adequate clearance for all parts and that the throttle snaps shuts all points throughout the entire steering range. Also, you must put the motorcycle on a front stand (front wheel in the air) and fully extend the forks and be sure that the brake lines do not get pulled tight. Extended brake lines may be required for safe installation. Always consult a trained professional.

WARNING - VERY IMPORTANT : Ensure that the cables, hoses and all control parts do not contact any part of the motorcycle and that you have full ability to manipulate the controls throughout the entire range of steering. Also, be sure that the throttle returns freely after being fully opened throughout the entire range of steering. **FAILURE TO HEED THESE WARNINGS MAY CAUSE LOSS OF CONTROL OF MOTORCYCLE AND SERIOUS INJURY OR DEATH. DO NOT OPERATE THE MOTORCYCLE IF THERE ARE ANY INTERFERENCE ISSUES WITH EITHER THE MOTORCYCLE PARTS OR YOUR BODY, OR WITH A THROTTLE THAT DOES NOT RETURN FREELY.**

- 13) Fully tighten the handlebar pinch bolts with a 90-degree allen wrench. Tighten the bolts in three step increments to ensure even torque.

- 14) Snug the riser base clamps to the fork tubes by hand with a 90 degree allen wrench. Next fully tighten the two forward bolts. Then fully tighten the two rear bolts. Perform a final check on all four bolts, ensuring that they are all equally and fully tight.

IMPORTANT : After tightening all fasteners according to instructions and to industry-standard* torque specs, attempt to force each unit to slip on fork tube. **ANY ABILITY OF A CLIP-ON TO SLIP CAN CAUSE LOSS OF CONTROL AND SERIOUS INJURY OR DEATH. NEVER OPERATE MOTORCYCLE WITH A SLIPPING CLIP-ON.**