

WOODCRAFT CFMOTORSPORTS

105 Baldwinville Rd
Winchendon, MA 01475
(978)297-2977

www.woodcraft-cfm.com

05-0739 KTM 390 Rearset Instruction Sheet – Racing Use Only

Thank you for selecting CFMOTORSPORTS rearsets. Please note that these components are intended and approved for **racing use only**. As such, the footpegs are solid-mount and there are no brake light switches or return springs included.

- 1) Remove stock rearsets, footpegs and associated hardware. All components that are re-used in this kit should be cleaned and inspected for damage before re-installation.

IMPORTANT

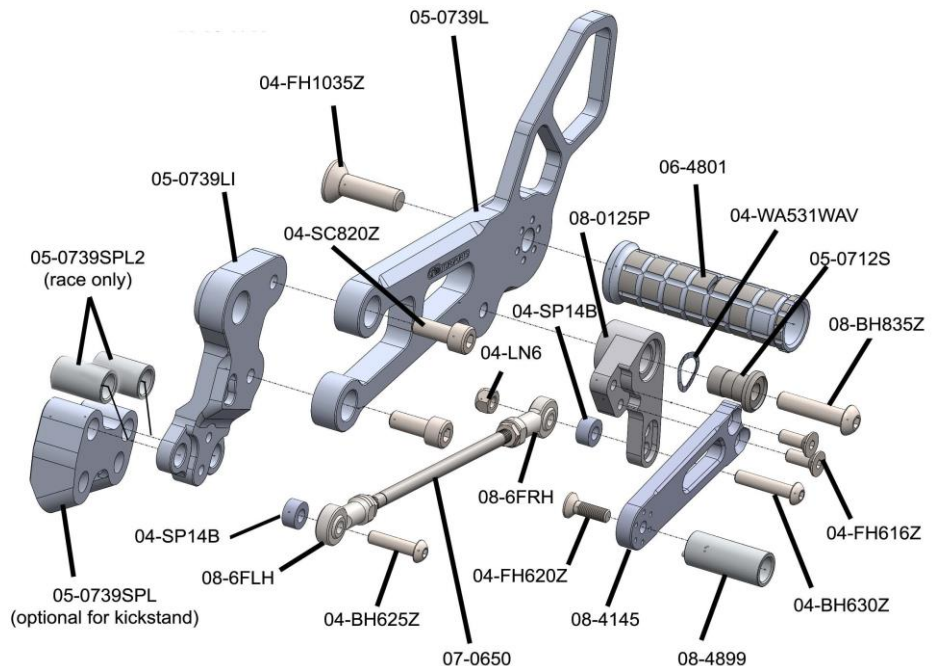
Tighten all fasteners to factory specification or industry standard. **FAILURE TO PROPERLY TIGHTEN ALL FASTENERS MAY CAUSE DAMAGE TO THE MOTORCYCLE, LOSS OF CONTROL AND SERIOUS INJURY OR DEATH**

Preparation - IMPORTANT - Secure all bolts with BLUE LOCTITE

- 1) Bolt the 05-0739LI and 05-0739RI inner brackets to the motorcycle using the OEM swingarm pivot bolt that was removed with the OEM rearsets through the top hole of each side.
- 2) Before tightening the swingarm pivot bolt, secure the bottom two bolts on each side using the supplied spacers (05-0739SPL and 05-0739SPR) between the brackets and the frame. **Shifter side:** If you elected to retain the OEM side stand, bolt the assembly to the back of the 05-0739SPL bracket. Once all the bolts are hand tight, re-torque the bolts to OEM specifications.

Shift Side Assembly Installation - IMPORTANT - Secure all bolts with BLUE LOCTITE.

- 1) Assemble the CFM shift pedal. First assemble the 08-4145 shift shaft to the 08-0125P pivot. Next, bolt the 08-6FRH heim to the pivot through the LOWER hole using the 6x30 bolt, 04-SP14B spacer and 04-LN6 lock nut. Bolt the entire assembly to the bracket using the 05-0712S steel pin, 8x35BH bolt and the wave washer (be sure to coat the outside of the pin with waterproof grease).
- 2) Bolt the CFM footpeg to the bracket using the included 10mm hardware. Once you have chosen your final position, bolt the bracket to the 05-0739LI inner bracket using the supplied 04-SC820Z hardware.
- 3) Connect the shift rod and heim joints to both the shift pedal and the Shift Spline on the engine. Note the orientation of the spacers in the drawing at the right.
- 4) Bring the shift pedal to the desired height using a combination of the OEM shift rod and the eccentric toe piece.



Brake Side Assembly Installation

IMPORTANT - Secure all bolts in this assembly with BLUE LOCTITE

1) Bolt the CFM footpeg to the bracket using the included 10mm hardware.

2) Assemble the main shaft (09-4145) to the CFM brake pedal. Be sure to apply quality waterproof grease to the surface of the 05-0225P2 brake pivot. Attach the brake pedal to the back of the bracket using all of the hardware shown in the drawing below.

3) Bolt the main 05-0739R bracket to the 05-0739RI inner bracket using the 04-SC820Z bolts.

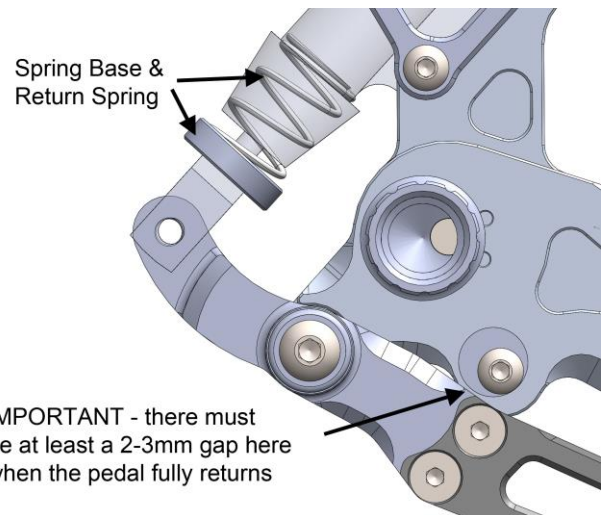
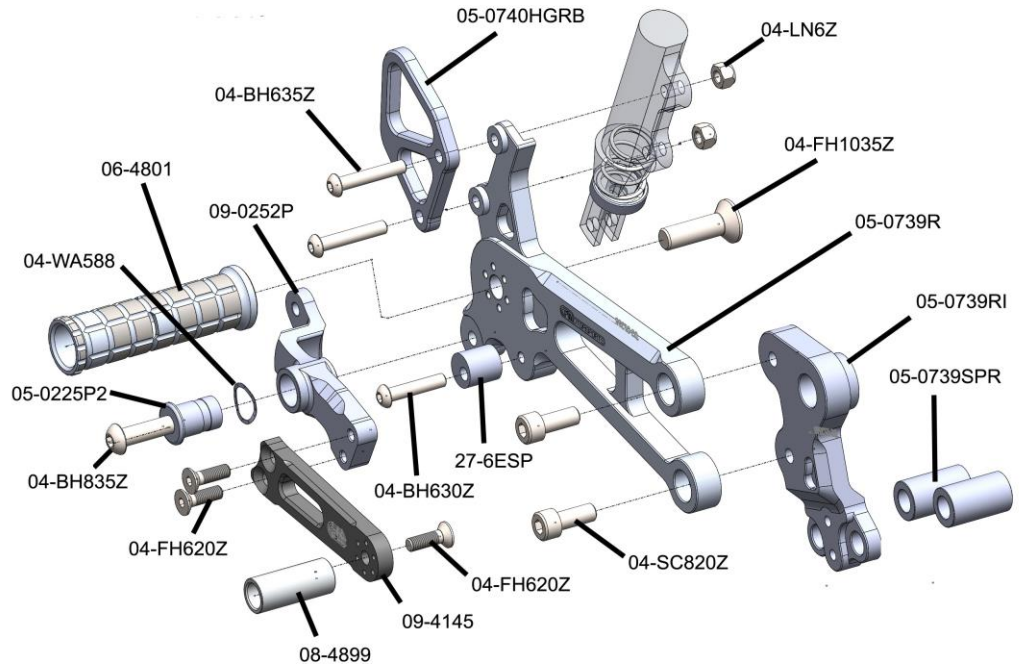
4) Remove the clevis from the bottom of the OEM master cylinder and install the spring base and return spring as shown in the picture at the bottom right.

5) Secure the master cylinder to the main bracket by passing the 04-BH635Z bolts first through the 05-0740HGRB heel guard, the main bracket, the master cylinder and then secure them in place using the 04-LN6Z lock nuts.

6) Attach the bottom of the master cylinder to the back of the CFM brake pedal using the OEM hardware.

7) Adjust the height of the brake pedal using the eccentric tip of the pedal and the adjuster at the base of the master cylinder.

8) Install the 27-ESP brake stop using the 04-BH630Z bolt. **IMPORTANT:** There must be at least a 2-3 mm gap between the pedal and the stop when the pedal tip that the rider pushes on is at its highest possible point.



BE SURE THAT ALL COMPONENTS OPERATE AND RETURN FREELY BEFORE USE.

If you have any questions regarding installation, please feel free to contact us.

IMPORTANT

Installation and use of this product will change the response of the motorcycle to rider control inputs. Failure of the rider to adapt to these changes may result in a loss of control, and serious injury or death. Improper installation and/or failure to comply with all warnings and instructions may cause a loss of control and serious injury or death. **DO NOT INSTALL OR USE THIS PRODUCT IF YOU ARE UNABLE TO DO SO IN COMPLIANCE WITH ALL INSTRUCTIONS AND WARNINGS. SEEK THE ASSISTANCE OF A TRAINED PROFESSIONAL TECHNICIAN.** Installation of this product releases the Woodcraft Technologies, Inc. from all liabilities as to the use of this product. The user recognizes that any alteration or modification to any motorcycle may increase the risk of injury or accident and may also render the motorcycle illegal for public road use