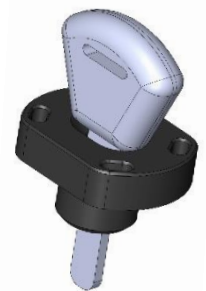


2019 KTM DUKE 790 w/Immobilizer – Racing Use Only

1. In order to access all connection locations, riders will need to completely remove the fuel tank, headlight and wire access panel behind headlight.
2. Disconnect the battery before making any electrical connections.
3. To more easily access the ignition cylinder connections, remove the metal plate directly behind the key cylinder. Disconnect the key cylinder connection from the main harness and also disconnect the immobilizer antenna from the cylinder.
4. Before installing the key-switch harness, take a key and insert it into the plastic holder. Use the supplied zip-ties to secure the key into the key holder and connect the antenna lead from the main harness to the white lead on the key holder.
Important: Secure the plastic key holder and wire so that these parts cannot move while the bike is in operation. Placing the key in the area under the previously removed metal plate is recommended before reattaching the plate.



5. Trace the wire from the OEM Stop/Run switch on the handlebar to the point where it connects with the wiring harness behind the headlight. Disconnect the switch at this point and connect the T connection of the wire harness (see picture at left).
6. Route the single black connection through the rear of the headlight housing (see picture at left). Connect the Woodcraft harness into the vacant plug left by the original key switch cylinder into the main harness.
7. Tuck the wires inside the box and re-install the cover.
8. Re-connect the battery. Your handlebar Stop/Run switch will now completely control your ignition system. Check the operation of all controls before riding.

WARNING: Installation and use of some Woodcraft Technologies, Inc. products will change the response of the motorcycle to rider control inputs. Failure of the rider to adapt to these changes may cause loss of control, and serious injury or death. Improper installation, and/or failure to comply with all warnings and instructions may cause loss of control and serious injury or death. DO NOT INSTALL OR USE ANY WOODCRAFT TECHNOLOGIES, INC. PRODUCTS IF YOU ARE UNABLE TO DO SO IN COMPLIANCE WITH ALL INSTRUCTIONS AND WARNINGS. SEEK THE ASSISTANCE OF AN EXPERIENCED TECHNICIAN.