

WOODCRAFT CFMOTORSPORTS

105 Baldwinville Rd
Winchendon, MA 01475
(978)297-2977

www.woodcraft-cfm.com

05-0171 Kawasaki Ninja ZX10 Rearset Instruction Sheet

Thank you for selecting CFMOTORSPORTS rearsets. Please note that these components are intended and approved for **racing use only**. As such, the footpegs are solid-mount and provisions for brake light switches are not provided with the kit.

- 1) Remove stock rearsets, footpegs and associated hardware. All components that are re-used in this kit should be cleaned and inspected for damage before re-installation.

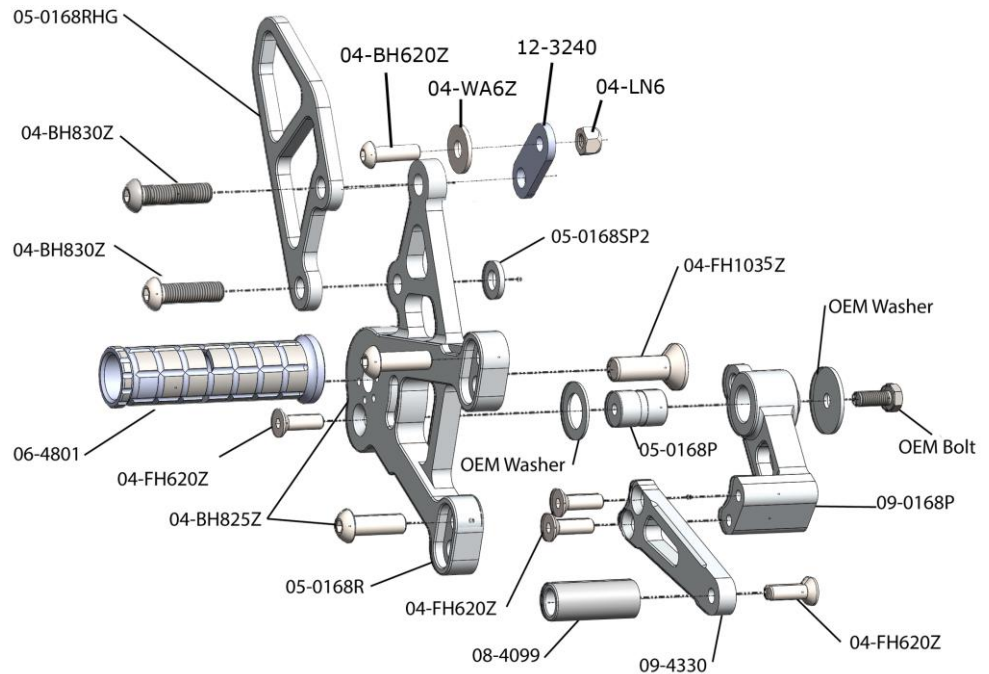
IMPORTANT

Tighten all fasteners to factory specification or industry standard. FAILURE TO PROPERLY TIGHTEN ALL FASTENERS MAY CAUSE DAMAGE TO THE MOTORCYCLE, LOSS OF CONTROL AND SERIOUS INJURY OR DEATH

Brake Side Assembly Installation

IMPORTANT - Secure all bolts in this kit with BLUE LOCTITE.

- 1) Attach the CFM brake pin to the back of the bracket. Assemble the CFM brake pedal. Attach the brake pedal to the pin using the stock bolt & washers, as shown at the right. Be sure to apply quality waterproof grease to the pin sliding surface.
- 2) Bolt the brake bracket assembly loosely to the frame using the supplied 8x25mm bolts. You can experiment with different mounting locations for the bracket and footpeg until you find what is most comfortable.



Woodcraft Recommendation: We have found many riders prefer the highest/furthest back peg position with the main bracket mounted in the low position (upper hole)

- 3) Tighten the footpeg bolt and the main bracket mount bolts.
- 4) Bolt the master cylinder to the bracket using the supplied bolts. The bolts first go through the heel guard, then through the main bracket. There are spacers that need to be placed between the master cylinder and the back side of the bracket - **the 12-3240 spacer is used in the upper hole.**
- 5) Attach the master cylinder to the brake pedal using the stock hardware and adjust the stock brake pedal to your desired height.
- 6) Secure the rear brake reservoir to the bracket using the included hardware. From the outside in, the order of parts is the 6x20mm bolt, 6mm washer, reservoir, 12-3240 bracket and then the 6mm locknut. Adjust the bracket angle as needed.



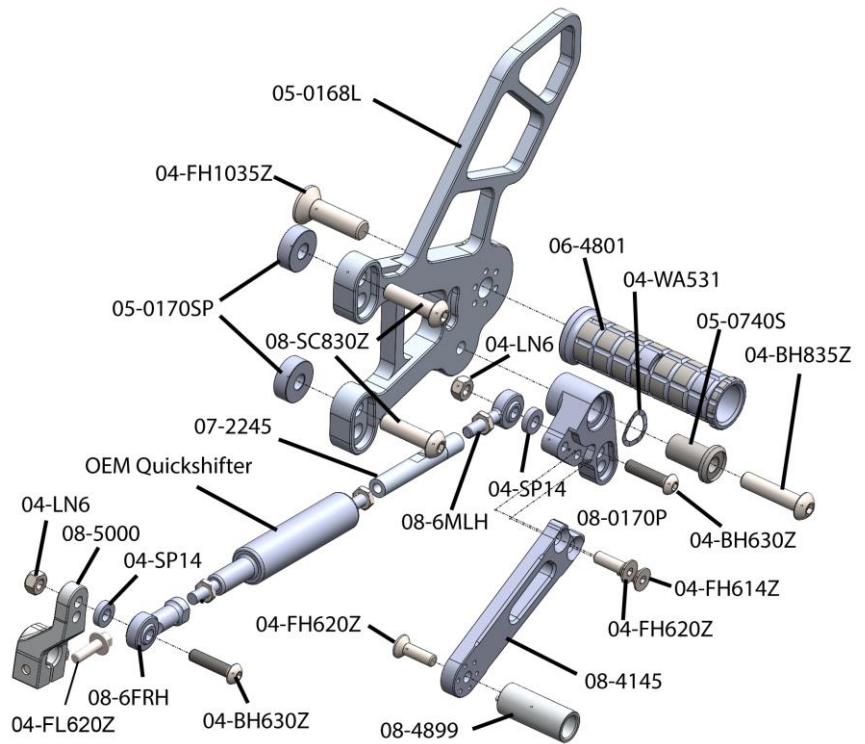
Shift Side Assembly Installation

IMPORTANT - Secure all bolts in this kit with BLUE LOCTITE.

- 1) Bolt the CFM footpeg to the bracket using the included 10mm hardware. Be sure to use the same location as you did on the brake side.
- 2) Assemble the CFM shift pedal. Attach the hiem joint to the back side of the pedal, placing the spacer between the hiem and the shift pivot, and secure it with the 6mm lock nut.

IMPORTANT: For a stock feel (which is what we suggest, as it ensures the best action with the factory quickshifter) be sure to use the **bottom** hole when you attach the hiem joint to the 08-0170 shift pivot.

- 3) Attach the shift lever to the bracket using the 8x35mm bolt, stainless spacer and wave washer as shown below. Be sure to generously apply quality waterproof grease to the sliding surface of the 05-0740S stainless sleeve to ensure smooth lever action. .
- 4) Bolt the main bracket to the same location as the brake side using the 8x30mm bolts. Please the included spacers between the frame and the bracket.
- 5) Take the nut off the OEM shift pedal and thread it on the hiem joint on the CFM pedal. Connect the supplied 07-2245 shift rod to the shift pedal and stock quickshifter by threading it on both parts simultaneously.
- 6) Remove the OEM shift knuckle and replace it with the ZX10 GP shift knuckle.



IMPORTANT –Use the **upper** hole when assembling the 08-6FRH hiem joint to the 08-5000 knuckle for a stock feel.

GP Shift – Orient the knuckle in the UP position. NOTE: You will need to re-flash the ECU for GP shift

Standard Shift – Orient the knuckle in the DOWN position

- 7) As you select the proper spline for the knuckle and adjust the pedal height with the shift rod, be sure that the shift rod makes about a 90 degree angle with the stock shift spline and with the shift pedal. With the pedal to the desired height, lock the shift rod in place with nuts on both sides of the rod.

BE SURE THAT ALL COMPONENTS OPERATE AND RETURN FREELY BEFORE USE

If you have any questions regarding installation, please feel free to contact us.

IMPORTANT

Installation and use of this product will change the response of the motorcycle to rider control inputs. Failure of the rider to adapt to these changes may result in a loss of control, and serious injury or death. Improper installation and/or failure to comply with all warnings and instructions may cause a loss of control and serious injury or death. **DO NOT INSTALL OR USE THIS PRODUCT IF YOU ARE UNABLE TO DO SO IN COMPLIANCE WITH ALL INSTRUCTIONS AND WARNINGS. SEEK THE ASSISTANCE OF A TRAINED PROFESSIONAL TECHNICIAN.** Installation of this product releases the Woodcraft Technologies, Inc. from all liabilities as to the use of this product. The user recognizes that any alteration or modification to any motorcycle may increase the risk of injury or accident and may also render the motorcycle illegal for public road use