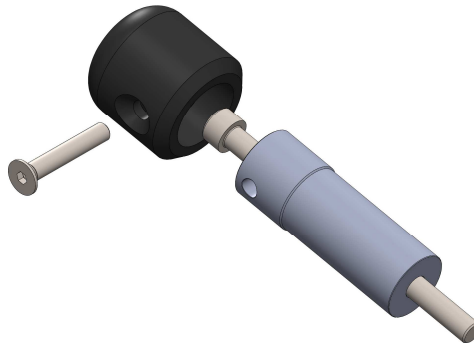


WARNING: These sliders will use the most forward engine mount bolts that pass through the frame and thread into the cylinder head - shown in the photos below. Always start the first few turns by hand before using the ratchet on the bolt. We recommend using a small amount of anti-seize paste on the supplied 10mm bolts before installation. These main bolts should be torqued to about 40 ft-lbs

Left Side

1) Remove your OEM left side motor mount bolt. **Note:** there is a nut on the back side you will want to keep your hand on as the bolt is removed.



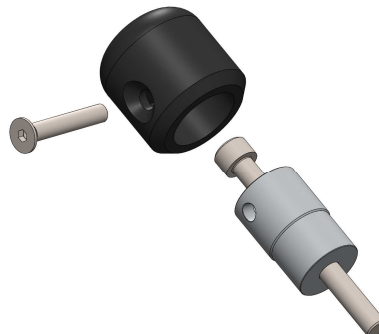
2) Attach the slider base to the motorcycle using the 10mm bolts provided, threading them in place of your motor mount bolts. The longer base goes on the left side using the 10x100mm bolt. The OEM nut is re-used

3) Torque the left side bolt before removing the right side OEM bolt

Right Side

1) Repeat the same exact procedure as on the left side. The right side base is shorter than the left and uses the 10x140mm bolt.

Note: there is a nut and a steel spacer on the back side you will want to keep your hand on as the bolt is removed. Both of these stock parts are re-used with the slider



Pucks

Slide the plastic slider over the top of the base and secure it in place using the 8mm countersunk bolt provided. The bolt passes first through the non threaded hole on the aluminum base and then screws into the threaded hole on the far side. The plastic is undersized on the far side of the slider to act as a locknut for the bolt.

NOTE: There is **NO** body work trimming required for this frame slider kit with 1099 and 1399 pucks. **50-1599 dome pucks Will require trimming to clear the bodywork**

WARNING: Improper installation and/or failure to comply with all warnings and instructions may cause a loss of control and serious injury or death. The motorcycle should be run and thoroughly inspected before use. DO NOT INSTALL OR USE THIS PRODUCT IF YOU ARE UNABLE TO DO SO IN COMPLIANCE WITH ALL INSTRUCTIONS AND WARNINGS. SEEK THE ASSISTANCE OF A TRAINED PROFESSIONAL TECHNICIAN.