

**WOODCRAFT CFMOTORSPORTS**

105 Baldwinville Rd  
Winchendon, MA 01475  
(978) 297-2977

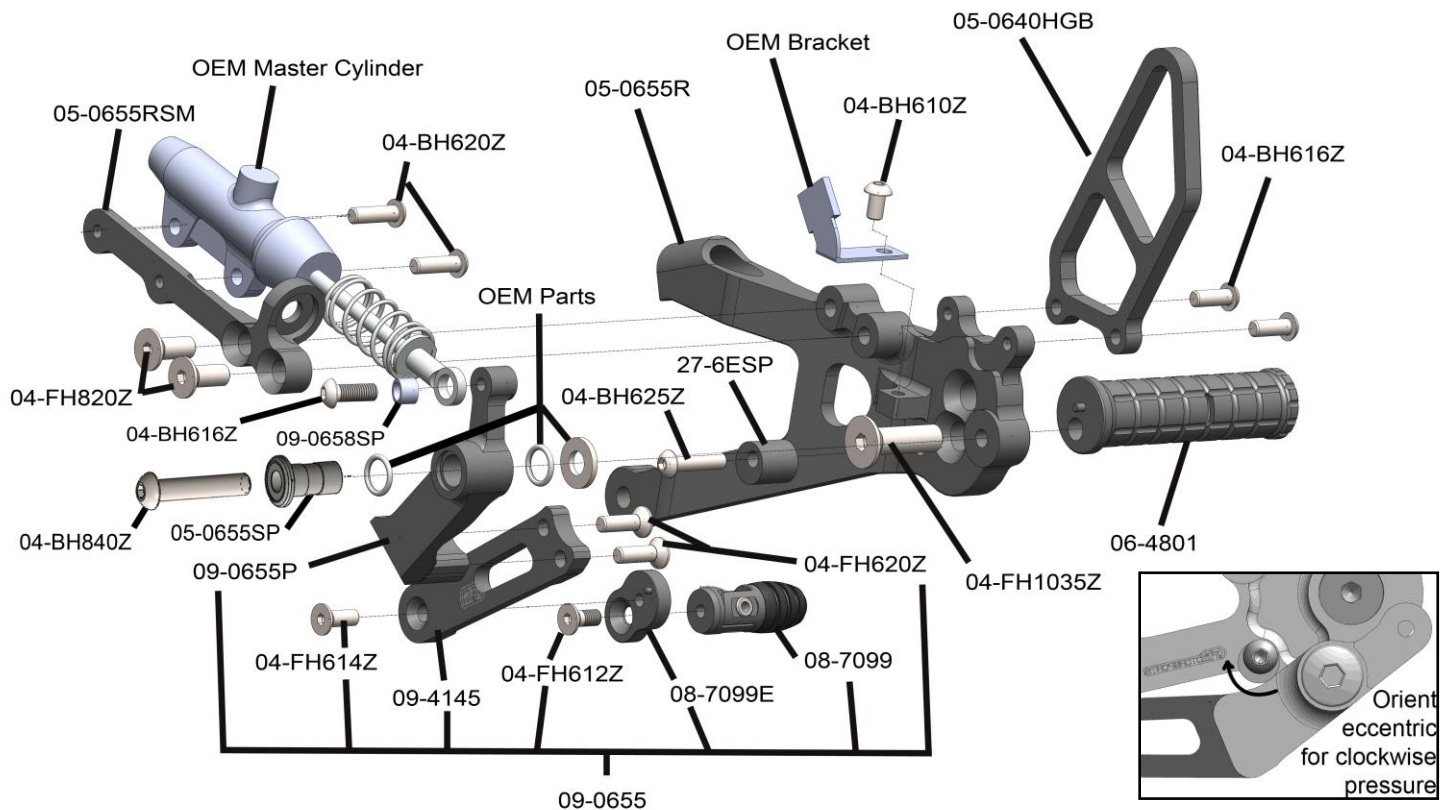
**Ducati Panigale V4 Streetfighter Rearset Instruction Sheet – Racing Use Only**

Thank you for selecting CFMOTORSPORTS rearsets. The components you have just purchased for your motorcycle are designed to improve the ground clearance, crash worthiness and overall good looks of your motorcycle. Please note that these components are intended and approved for **racing use only**. As such, the footpegs are solid-mount and provisions for brake light switches and brake pedal return springs are generally not provided.

- 1) Remove stock rearsets, footpegs and associated hardware. All components that are re-used in this kit should be cleaned and inspected for damage before re-installation.

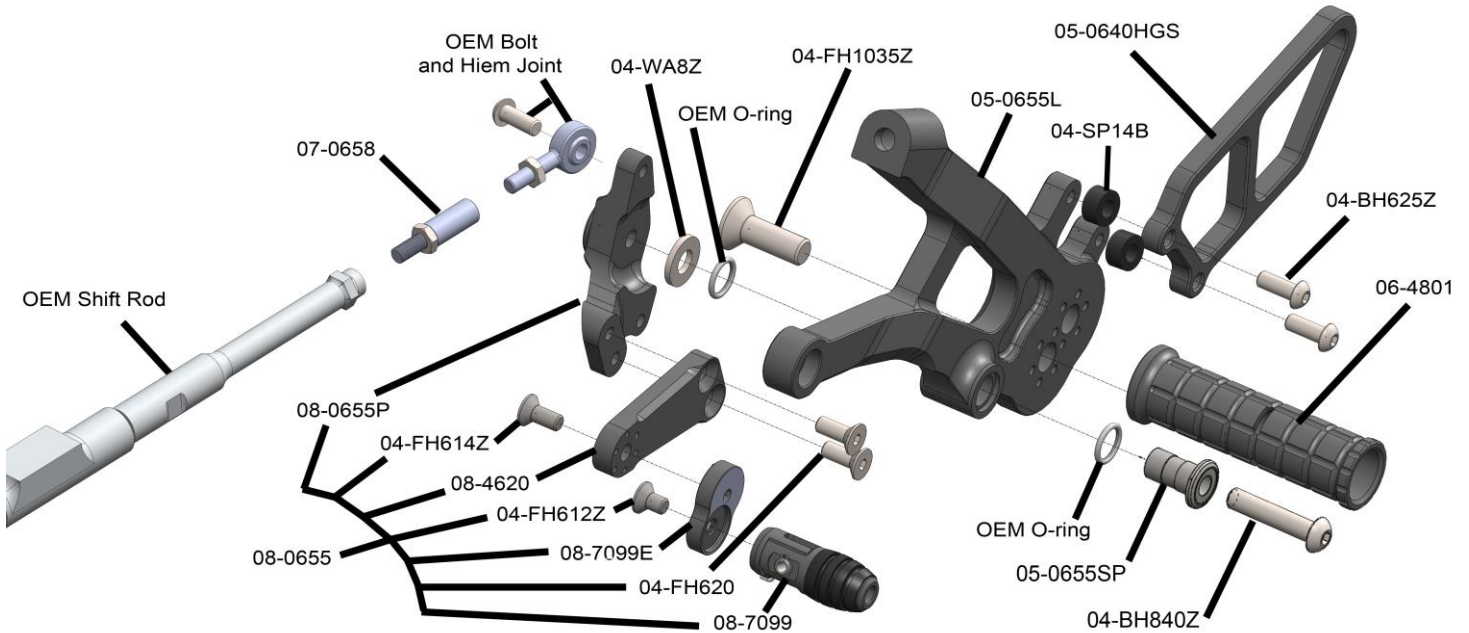
**IMPORTANT**

Tighten all fasteners to factory specification or industry standard. FAILURE TO PROPERLY TIGHTEN ALL FASTENERS MAY CAUSE DAMAGE TO THE MOTORCYCLE, LOSS OF CONTROL AND SERIOUS INJURY OR DEATH

**Brake Side Assembly Installation**

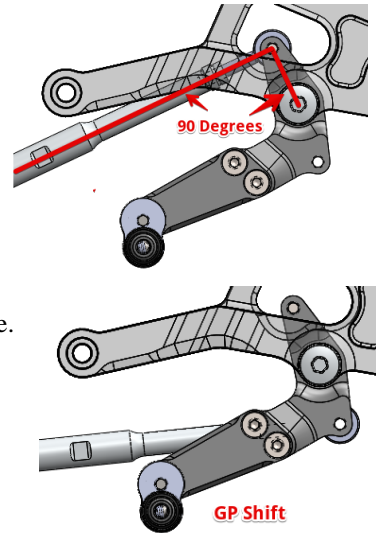
- 1) **Important:** use **BLUE LOCTITE** on all bolts. Be sure to use fresh Loctite and allow it to fully set before riding.
- 2) Assemble the 09-0655 brake pedal before installation. Bolt the CFM brake pedal to the back side of the bracket using 04-BH840Z Bolt, 05-0655P Bushing and the other OEM hardware and o-rings as shown. Be sure to apply waterproof grease on the sliding surface of the bushing before assembly.
- 3) Bolt the 05-0655RSM master cylinder mount to the back side of the bracket using the supplied 04-FH820Z hardware.
- 4) Bolt the OEM master cylinder to the bracket using a combination of the supplied 04-BH620Z bolts, the supplied 04-BH616Z bolt and spacer 09-0658SP. Adjust the eccentric spacer 27-6ESP so that there is at least a few millimeters of play in the brake pedal when it is not being applied. Orient the spacer so the brake pedal pushes in the clockwise direction (see inset above).
- 5) Attach the OEM Bracket for the heat shield to the back side of the bracket using the 04-BH610Z hardware.
- 6) Bolt the CFM footpeg 06-4801 to the bracket using the included 10mm hardware. Note that the footpeg has a 6-position eccentric adjustment and that the pegs on both sides of the motorcycle must be placed in the same location. Test different peg locations and main bracket heights until you find a comfortable position.

- 7) Bolt the 05-0655R inner bracket to the frame using the OEM hardware.
- 8) Adjust the brake pedal to your desired height using the eccentric plate 08-7099E. **IMPORTANT -the toe peg must be oriented so that the tip folds directly backwards (towards the footpeg).**
- 9) Secure the heel guard 05-0640HGS to the bracket using the OEM hardware.



### Shift Side Assembly Installation

- 1) **Important:** use **BLUE LOCTITE** on all bolts. Be sure to use fresh Loctite and to allow it to fully set before riding.
- 2) Secure the 07-0658 Shift rod extension in the OEM shift rod using the supplied jam nut. The extension should be at least 75% threaded into the OEM rod.
- 3) Assemble the 08-0655 shift pedal before installation. Install the OEM hiem joint in either the standard (top) or GP (bottom) position as desired.
- 4) Bolt the shift pedal to the bracket using the 04-BH840Z bolt, 05-0655SP bushing and OEM o-rings. Replace the stock flat washer with the supplied 04-WA8Z washer. Be sure to apply quality waterproof grease to the outer surface of the bushing.
- 5) Attach the 05-0640HGS heel guard using the supplied bolts and spacers as shown above. Install the 06-4801 footpeg (in the same location as the brake side).
- 6) Adjust the shift pedal so that the rod is at 90 degrees as shown at the right.
- 7) Bolt the 05-0655L bracket to the frame using the OEM hardware.
- 8) Adjust the pedal height for comfort using the eccentric adjusting plate 08-7099E. Important, if using the optional folding toe peg, be sure to orient the folding toe peg so that it always folds directly backwards towards the footpeg.



### **BE SURE THAT ALL COMPONENTS OPERATE AND RETURN FREELY BEFORE USE**

If you have any questions regarding installation, please feel free to contact us.

#### **IMPORTANT**

Installation and use of this product will change the response of the motorcycle to rider control inputs. Failure of the rider to adapt to these changes may result in a loss of control, and serious injury or death. Improper installation and/or failure to comply with all warnings and instructions may cause a loss of control and serious injury or death. **DO NOT INSTALL OR USE THIS PRODUCT IF YOU ARE UNABLE TO DO SO IN COMPLIANCE WITH ALL INSTRUCTIONS AND WARNINGS. SEEK THE ASSISTANCE OF A TRAINED PROFESSIONAL TECHNICIAN.** Installation of this product releases the Woodcraft Technologies, Inc. from all liabilities as to the use of this product. The user recognizes that any alteration or modification to any motorcycle may increase the risk of injury or accident and may also render the motorcycle illegal for public road use