



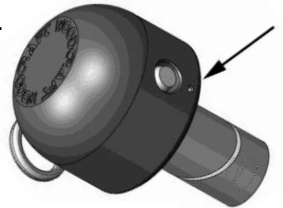
45-0190F
Installation Instructions
Front Axle Slider Kit

1) **Axle Side:** The hex base will be installed in non threaded side the axle. To install the base, run the 8x200mm socket head through the center of the 45-0190FA base.

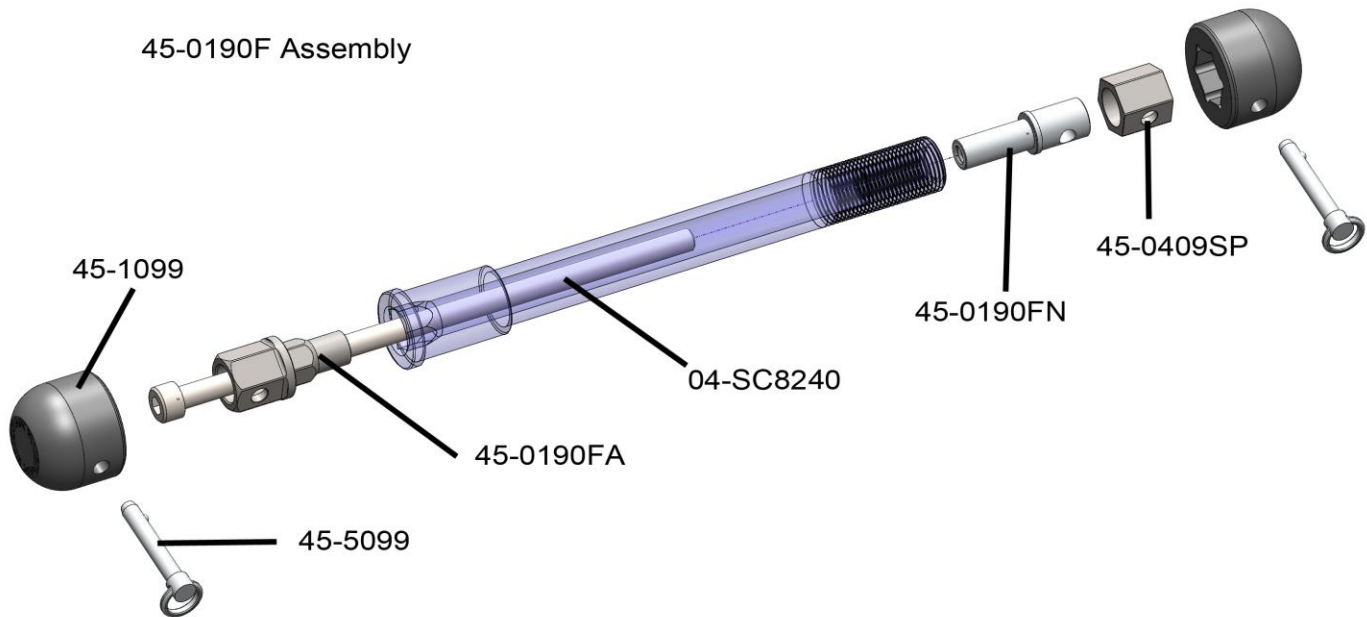
Note: Occasionally, people damage the axles by hammering them in, and will slightly deform the axle itself. Since our axle sliders are a precise fit, you may need to take a file to remove any raised edges. You will not need to do this on an axle in good condition.

2) **Nut Side:** The 8x240mm bolt threads into the 45-0190FN base. You can put a screwdriver through the cross drilled hole in the base to keep it from spinning while you tighten the bolt. Use a small amount of **Blue** Loctite on the threads of the bolt. Once tight, slide the 45-0409SP hex adapter over the 45-0190FN base and line up the holes.

3) Install the plastic tops using the removable pin. **Important:** One side of the puck has a small hole drilled beneath the main hole. Install the pin so that the end of the pin with the ball is on the same side as this hole. The pin should be installed so that the ring is on the upper half of the slider.



45-0190F Assembly



A note for racers: If your tech inspector wants you to safety wire these (most will not) then you need to orient the pins so that the safety wire acts to pull the pin into the puck.

105 Baldwinville Rd, Winchendon, MA 01475

978-297-2977

WARNING: Improper installation and/or failure to comply with all warnings and instructions may cause a loss of control and serious injury or death. The motorcycle should be run and thoroughly inspected before use. DO NOT INSTALL OR USE THIS PRODUCT IF YOU ARE UNABLE TO DO SO IN COMPLIANCE WITH ALL INSTRUCTIONS AND WARNINGS. SEEK THE ASSISTANCE OF A TRAINED PROFESSIONAL TECHNICIAN