

SECONDARY / FUEL MODULE



PARTS LIST

- 1 Secondary Fuel Module
- 1 CAN link cable
- 1 Installation Guide
- 2 Velcro strips
- 1 Alcohol swab

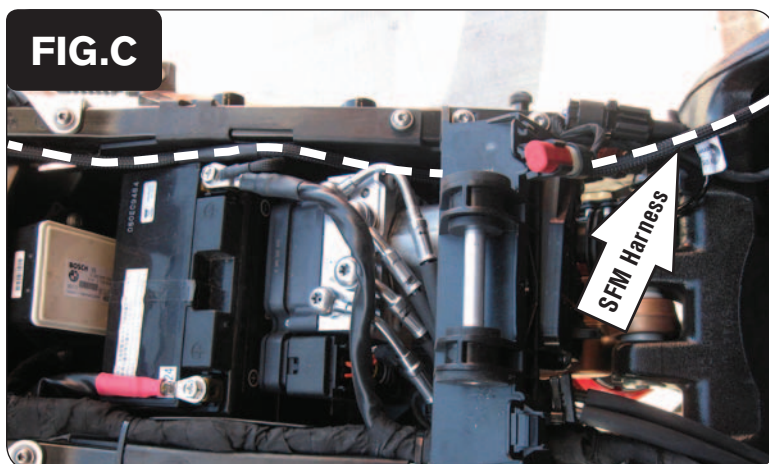
2010-2016 BMW S1000RR
2014-2016 BMW S1000R
2015-2016 BMW S1000XR

Installation Instructions

PLEASE READ ALL DIRECTIONS BEFORE STARTING INSTALLATION

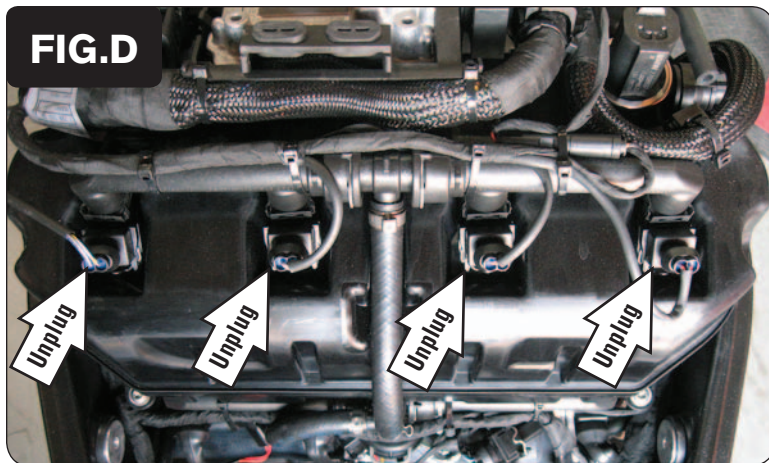
Dynojet

2191 Mendenhall Drive North Las Vegas, NV 89081 (800) 992-4993 www.powercommander.com

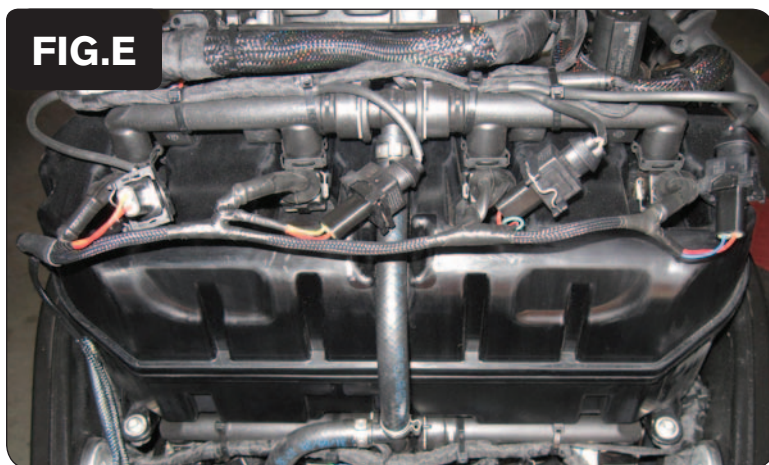


SFM-8

- 1 Remove the seat.
- 2 Remove the fuel tank covers (Fig. A).
- 3 Remove the fuel tank.
- 4 Remove the left and right side fairings.
- 5 Install the SFM in the tail section using the supplied Velcro (Fig. B). Place the SFM near or on top of the PCV.
Clean both surfaces with the supplied alcohol swab before attaching the Velcro.
- 6 Plug the supplied CAN link cable into one of the expansion ports of the SFM and the other end into one of the expansion ports of the PCV.
It doesn't matter which ports you use.
You might also need to install a CAN termination plug into an empty port of the CAN bus if ALL devices in the PCV Device Network have a serial number starting with 14 or lower. If ANY device on the CAN bus (PCV, SFM, IM, or AT) has a serial number starting with 15 or higher, a CAN termination plug is NOT needed.
- 7 Route the SFM harness down the left side of the bike. Route the harness underneath the fuel tank bracket and go towards the throttle bodies (Fig. C).



- 8 Unplug the stock wiring harness from each of the upper fuel injectors (Fig. D).



- 9 Plug the SFM wiring harness in-line of the stock wiring harness and each upper fuel injector (Fig. E).

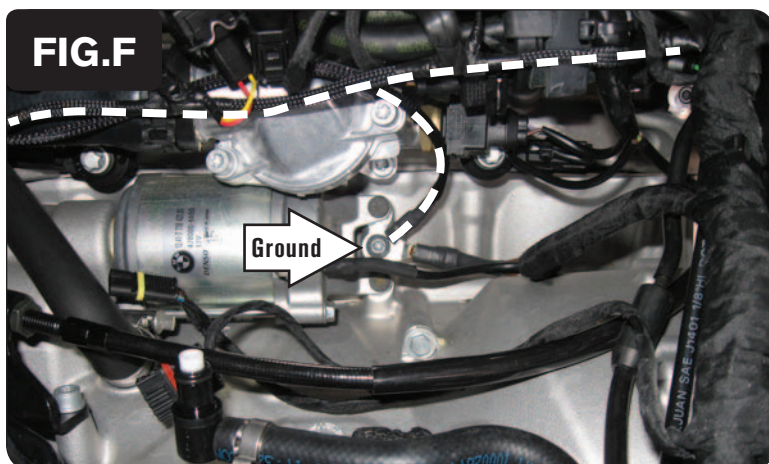
SFM wiring harness:

ORANGE - cylinder #1 (left most)

YELLOW - cylinder #2

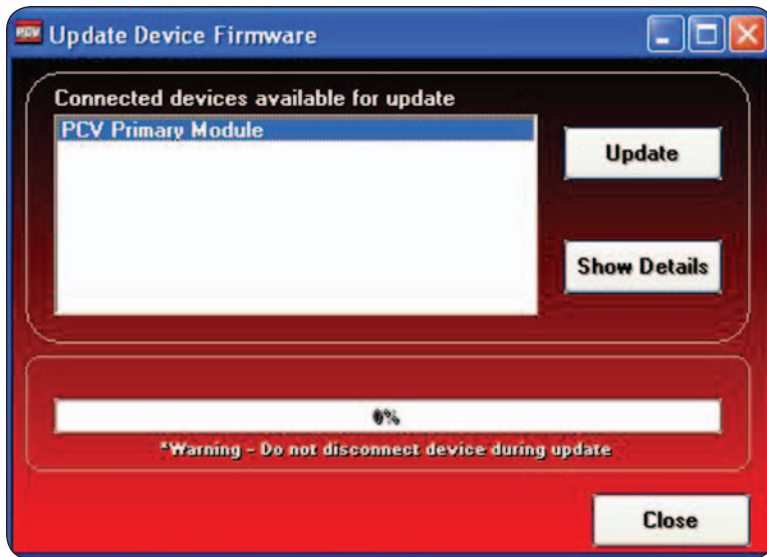
GREEN - cylinder #3

BLUE - cylinder #4 (right most)



- 10 Attach the ground wire of the SFM to the stock common ground location at the back of the engine near the starter (Fig. F).
- 11 Reinstall the fuel tank, bodywork, and seats.

There are 2 wires coming out of the harness of the SFM near the module. These wires will not be connected to anything at this time. You can tape them up out of the way. They will only be used if you should add the Ignition Module in the future.



IMPORTANT NOTICE

The SFM and your PCV may need to be updated. The PCV and SFM need to both have the same firmware loaded and the most up to date version available (at least 0.1.10.6 or higher) installed. To install this firmware you also need to be using the latest PC5 software version (1.0.6.4 or higher). The latest software and firmware can be found at: http://www.powercommander.com/powercommander/Downloads/powercommander_downloads.aspx?ProdType=PCV

To update your firmware go to Power Commander Tools - Update Firmware. Click on the unit you wish to update (PCV Primary Module or Secondary Fuel Module) and then click on Update. This will bring up a window so that you can search the computer to find and open the firmware file. Open the file from the location on the computer where it has been saved.

The SFM needs to be added to the PCV network. To do so connect a USB cable to the PCV and another USB cable to the SFM. Open the PCV control center software and it will add the SFM to the network. You are now able to use the SFM.

The SFM is shipped in BASIC mode. This means that you will have 1 Fuel table in the software. This fuel table controls the lower set of injectors and upper set of injectors simultaneously. Whatever value is entered in a cell will automatically be put into the corresponding cell for the upper injectors.

If you put the SFM in ADVANCED mode you will have 2 Fuel tables. This allows a separate fuel table for the upper injectors, if desired.