



YOSHIMURA

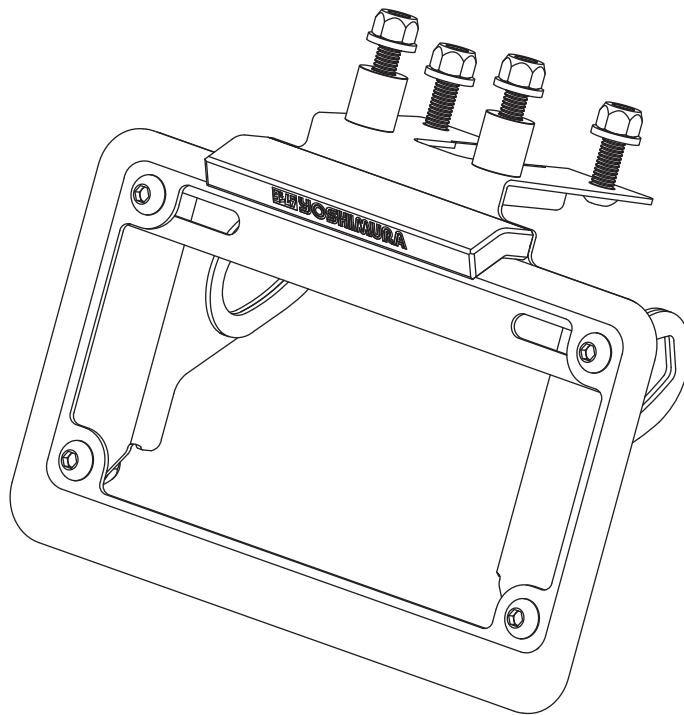
RESEARCH&DEVELOPMENT OF AMERICA, INC.

5420 DANIELS STREET STE A, CHINO CA., 91710 · (800)634-9166 · (909)628-4722 · FACSIMILE (909)591-2198

www.yoshimura-rd.com

FENDER ELIMINATOR KIT

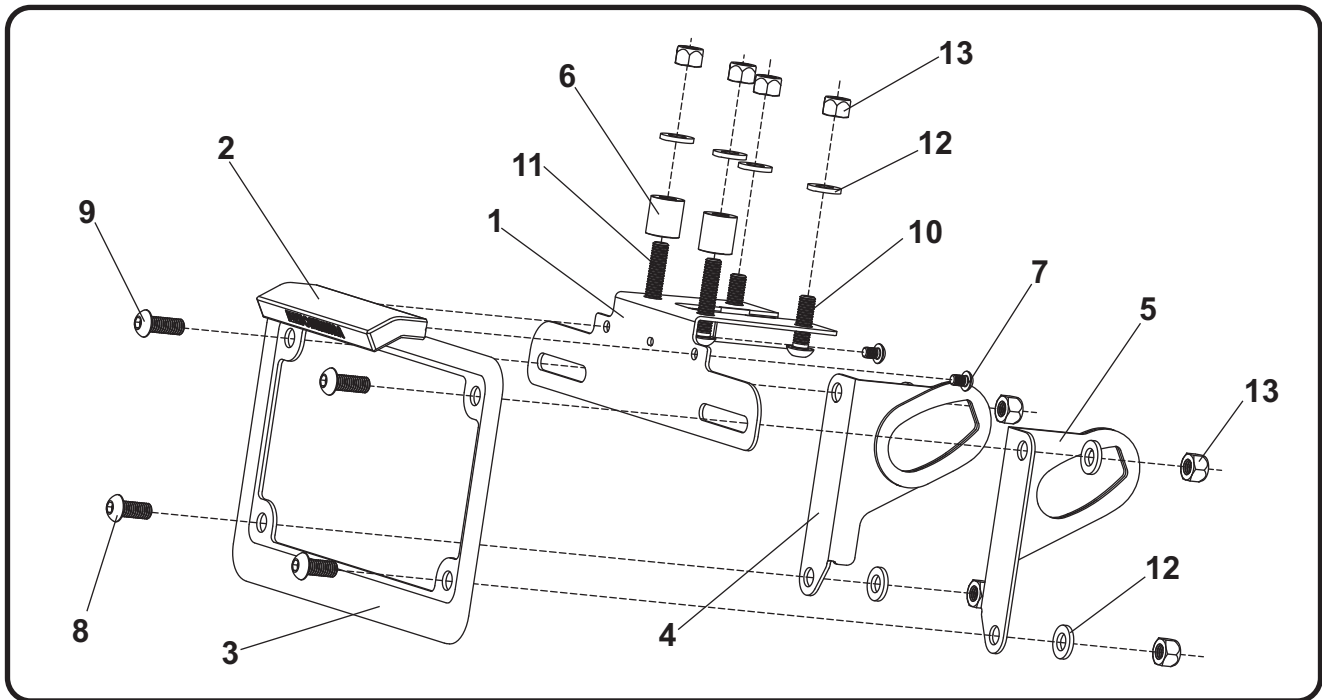
070BG148000
Kawasaki Z800



THIS PRODUCT IS NOT DOT APPROVED.

Yoshimura R&D of America, Inc. is not liable or responsible for any resulting event caused by the installation of this product. Check with local laws and regulations for compliance prior to installation and use. This product is not intended for use on public highways.





No.	Item	Description	Qty.
1	14800-FEBKT	Fender Eliminator Bracket	1
2	070BG-LH-K	LED License Plate Light	1
3	070BG-LPF	License Plate Frame	1
4	14200-TSL	Left Turn Signal Bracket	1
5	14200-TSR	Right Turn Signal Bracket	1
6	6X13X14.5SPCRHA	Aluminum Spacer	2
7	M4X6BHS	4mm x 6mm Button Head Screw	2
8	M6X14BHS	6mm x 14mm Button Head Screw	2
9	M6X16BHS	6mm x 16mm Button Head Screw	2
10	M6X20BHS	6mm x 20mm Button Head Screw	2
11	M6X30BHS	6mm x 30mm Button Head Screw	2
12	6MMWASHER	6mm Flat Washer	8
13	6MMLN	6mm Nylon Lock Nut	8
**	94785-01-ND	Butt Connectors	2
**	ZT-300	Cable Ties	3
**	17029	Yoshimura Sticker Sheet	1
Optional Parts			
***	070BGUNVTBKT	Universal Turn Signal Bracket Kit	

** Not shown on diagram.

*** The Yoshimura Universal Turn Signal Bracket Kit is to be used with aftermarket stud-mounted turn signals and is sold separately.

Removal

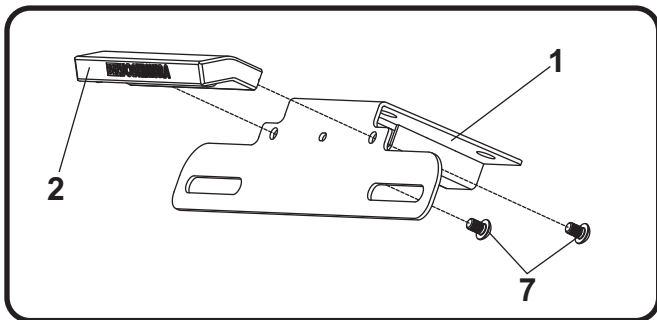
1. Remove rider seat.
2. Remove passenger seat.
3. Remove the upper rear cowl.
4. While securely supporting the stock fender assembly, remove the four fender bolts and carefully lower the fender.
5. Locate and disconnect left and right turn signal and license plate light connectors and carefully separate fender assembly from the lower undertail.

Note: The stock hex-shaped cap nut in the two forward mounting holes will be re-used. Do not remove.

6. Disassemble the stock fender assembly and remove the left and right turn signals.
7. Cut the stock license plate light connector from the stock fender assembly. Be sure to cut at least a 6" section of wire from the connector.

Installation

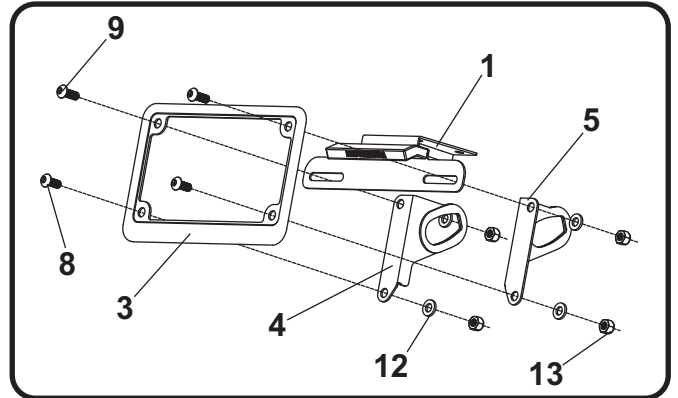
1. Using the stock hardware, install left and right turn signals onto (No. 4,5) 14200-TSL/R, left and right turn signal brackets.
2. Install (No. 2) 070BG-LH-K, Yoshimura license plate light onto (No. 1) 14800-FEBKT, Yoshimura fender eliminator bracket using (No. 7) M4X6BHS, 4mm button head screws provided in the kit.



3. Route license plate light wire through the hole in bracket. Using the 94785-01-ND butt connectors provided in the kit, connect the Yoshimura license plate light wires to the stock license plate light wires as follows:

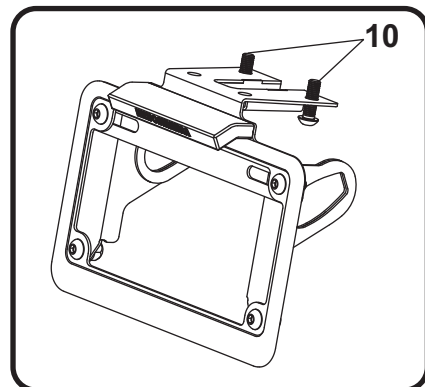
Black w/ Yellow Stripe -to- Black
Red -to- Red

4. Assemble and install (No. 3) 070BG-LPF, license plate frame and (No. 4,5) 14200-TSL/R, left and right turn signal brackets onto (No. 1) 14800-FEBKT, fender eliminator bracket as shown.



5. Route turn signal wires and license plate light wires through the hole in the bracket and through lower undertail and re-connect to the stock harness. Route wires in factory undertail location.
6. Install (No. 1) 14800-FEBKT, assembled fender eliminator to lower undertail using (No. 10) M6X20BHS, 6mm screws.

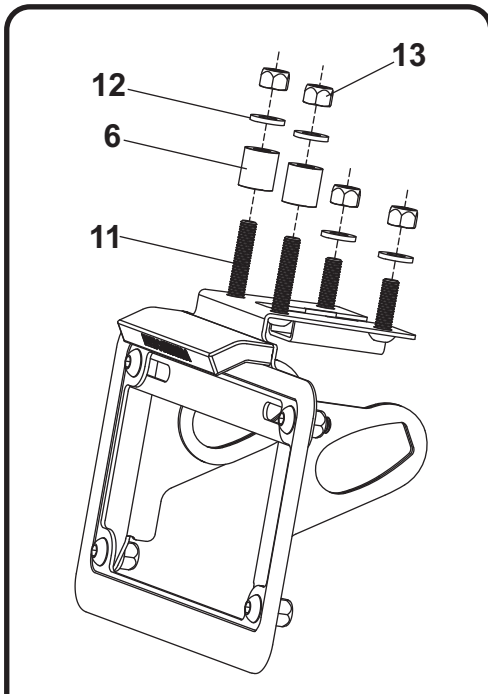
Note: M6X20BHS is installed to the stock hex-shaped cap nuts in the forward holes on lower undertail.



7. Install (No. 11) M6X30BHS, 6mm screws and (No. 6) 6X13X14.5SPCRHA, aluminum spacers and push lower undertail and (No. 1) 14800-FEBKT, fender eliminator bracket up toward the frame. Secure to frame using (No. 12,13) 6MMWASHER, 6MMLN, washers and nuts as shown.

Note¹: The aluminum spacers must be installed through the rear holes in the lower undertail and in-between the frame and fender eliminator bracket.

Note²: The washers and nuts are installed from the top of the frame beneath the passenger seat.



8. Re-install the rear upper cowl.
9. Re-install passenger and rider seat.
10. Check for proper function of license plate light and turn signals and that all brackets and components are secure prior to riding.