



YOSHIMURA

RESEARCH&DEVELOPMENT OF AMERICA, INC.

5420 DANIELS STREET STE A, CHINO CA., 91710 · (800)634-9166 · (909)628-4722 · FACSIMILE (909)591-2198

www.yoshimura-rd.com

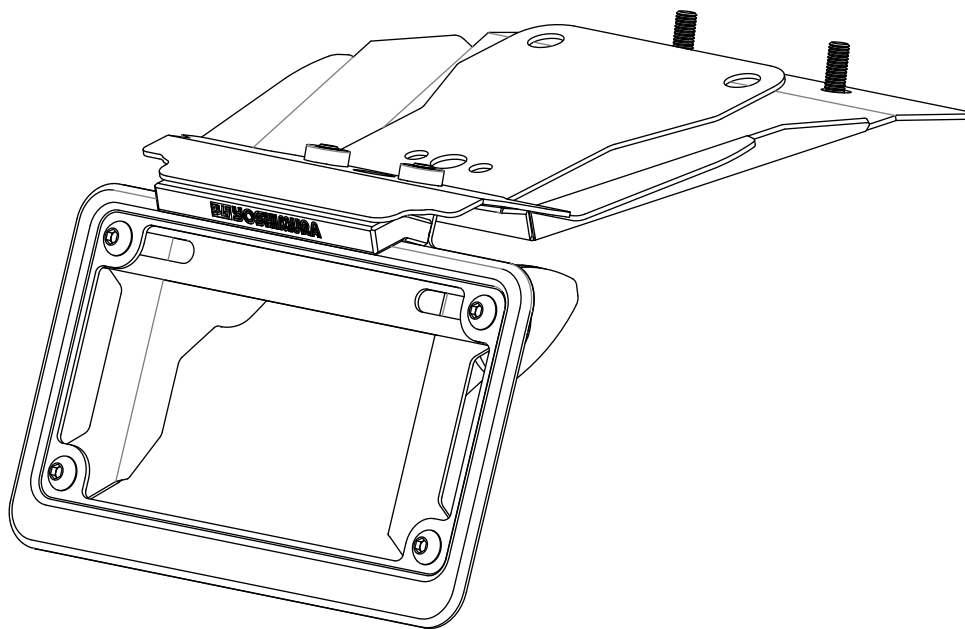
FENDER ELIMINATOR KIT

070BG123000

CBR250R

Honda CBR300R

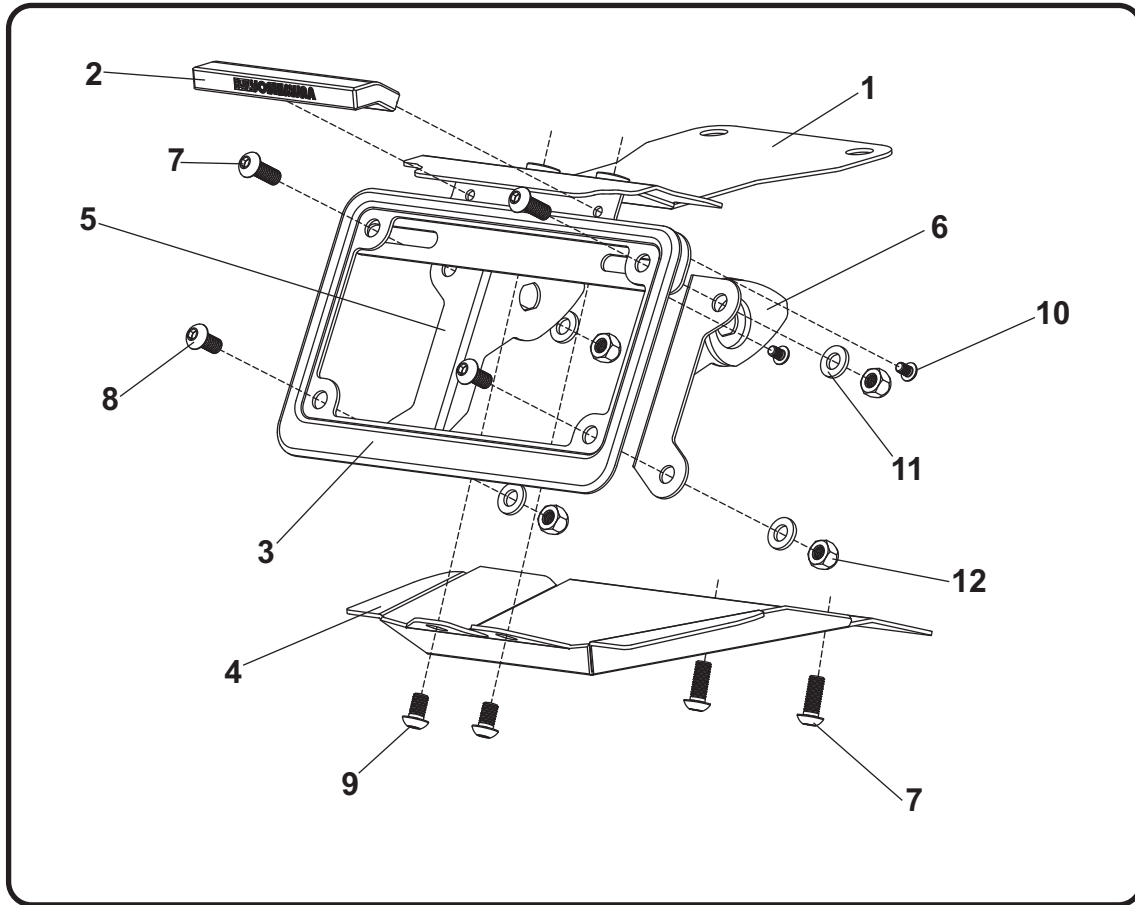
CB300F



THIS PRODUCT IS NOT DOT APPROVED.

Yoshimura R&D of America, Inc. is not liable or responsible for any resulting event caused by the installation of this product. Check with local laws and regulations for compliance prior to installation and use. This product is not intended for use on public highways.

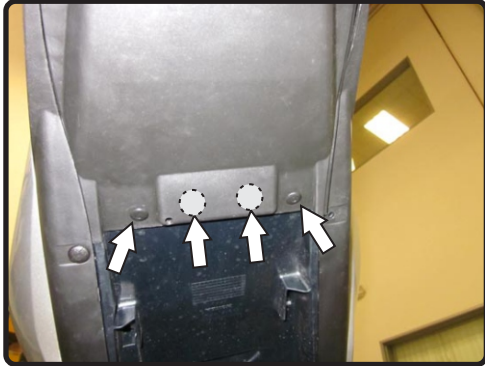




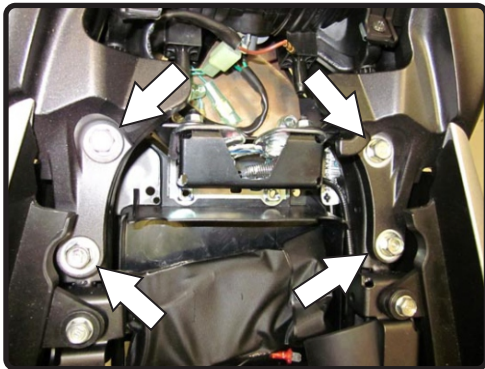
No.	Item	Description	Qty.
1	12300-FEBKT	Fender Eliminator Bracket	1
2	070BG-LH-K	LED License Plate Light	1
3	070BG-LPF	License Plate Frame	1
4	12250-FEB-00	Fender Eliminator Cowl	1
5	12250-TSBL-01	Left Turn Signal Bracket	1
6	12250-TSBR-01	Right Turn Signal Bracket	1
7	M6X16BHS	6mm x 16mm Button Head Screw	4
8	M6X12BHS	6mm x 12mm Button Head Screw	2
9	M6X10BHS	6mm x 10mm Button Head Screw	2
10	M4X6BHS	4mm x 6mm Button Head Screw	2
11	6MMWASHER	6mm Washer	4
12	6MMLN	6mm Nylon Lock Nut	4
**	94785-01-ND	Butt Connectors	2
**	17029	Yoshimura Sticker Sheet	1

Removal

1. Remove the rear under cover by removing the two trim clips. Remove the two bolts behind the under cover.



2. Disconnect the license plate light and turn signal wires.
3. Remove the passenger seat and disconnect the taillight connector.
4. Remove grab rails by removing the four bolts securing grab rails to subframe.

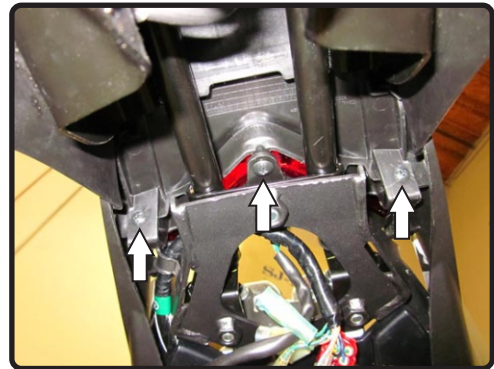


5. Remove the tail light assembly.

Remove the three screws securing the tail light cover and carefully remove.



Remove the five screws securing the tail light assembly and remove tail light by carefully pulling toward the rear of the vehicle.



6. Remove the stock fender assembly by removing the bolts securing fender assembly in place.

Note¹: For the CBR250R, there are three bolts securing the fender assembly support bracket to the subframe.

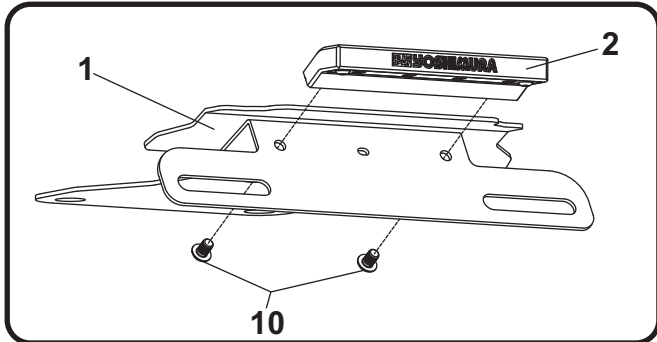
For the CB(R)300F/R, there are four bolts securing the fender assembly support bracket to the subframe.

Note²: The stock fender assembly support bracket with the rubber grommets will not be re-used.

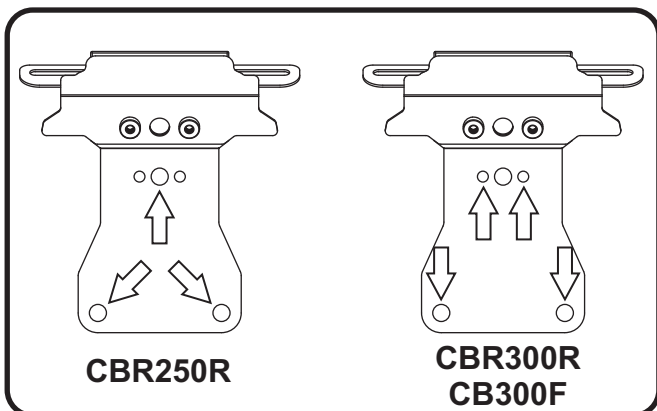
7. Remove the stock turn signals from fender assembly as they will be re-used with the Yoshimura fender eliminator kit.

Installation

1. Install (No. 2) *070BG-LH-K*, Yoshimura license plate light onto (No. 1) *12300-FEBKT*, Yoshimura fender eliminator bracket using (No. 10) *MAX6BHS*, 4mm button head screws provided in the kit.



2. Install (No. 1) *12300-FEBKT*, Yoshimura fender eliminator bracket to subframe using the stock bolts. See diagram below for correct hole mounting location depending on model.



3. Re-install the stock tail light assembly using the reverse steps of removal and reconnect to the stock connector.

Note: The stock fender assembly support bracket must be removed in order to install the Yoshimura Fender Eliminator Bracket.

4. Install stock left and right turn signals onto (No. 5,6) *12250-TSBL/R-01*, turn signal brackets. Route wires through the opening on fender eliminator bracket and re-connect wires accordingly by color.
5. Install (No. 3) *070BG-LPF*, license plate frame and (No. 5,6) *12250-TSBL/R-01*, turn signal brackets onto (No. 1) *12300-FEBKT*, fender eliminator bracket using the 6mm screws, washers, and nuts provided in the kit. See diagram for proper orientation and order of hardware.

6. Cut the stock license plate light connector from the stock fender. Be sure to cut at least a 6" section of wire from the connector. Using the butt connectors supplied in the kit, connect the Yoshimura Fender Eliminator wires to the stock license plate light connector as follows: Red wire goes to the brown wire; Black wire goes to the green wire.
7. Install (No. 4) *12250-FEB-00*, fender eliminator cowl using the provided 6mm screws. See diagram for proper orientation and order of hardware.
8. Re-install left and right grab rails using the stock bolts.
9. Re-install the passenger seat.
10. Check for proper function of license plate light, turn signals, brake light, and that all brackets and components are secure prior to riding.