



YOSHIMURA

RESEARCH&DEVELOPMENT OF AMERICA, INC.

5420 DANIELS STREET STE A, CHINO CA., 91710 · (800) 634-9166 · (909) 628-4722 · FAX (909) 591-2198

www.yoshimura-rd.com

Signature Series

Qualified Manufacturer Declared "Replacement Part"

2013~2016

Kawasaki Ninja 300

14700EJ220 (CF/CF)

14700EJ520 (SS/CF)

R-77 Stainless Steel Slip-On



Signature Series systems are:

- CARB/EPA tail-pipe emissions compliant.
- Marked with appropriate EPA noise labels.
- Independent laboratory tested for EPA new vehicle noise compliance.

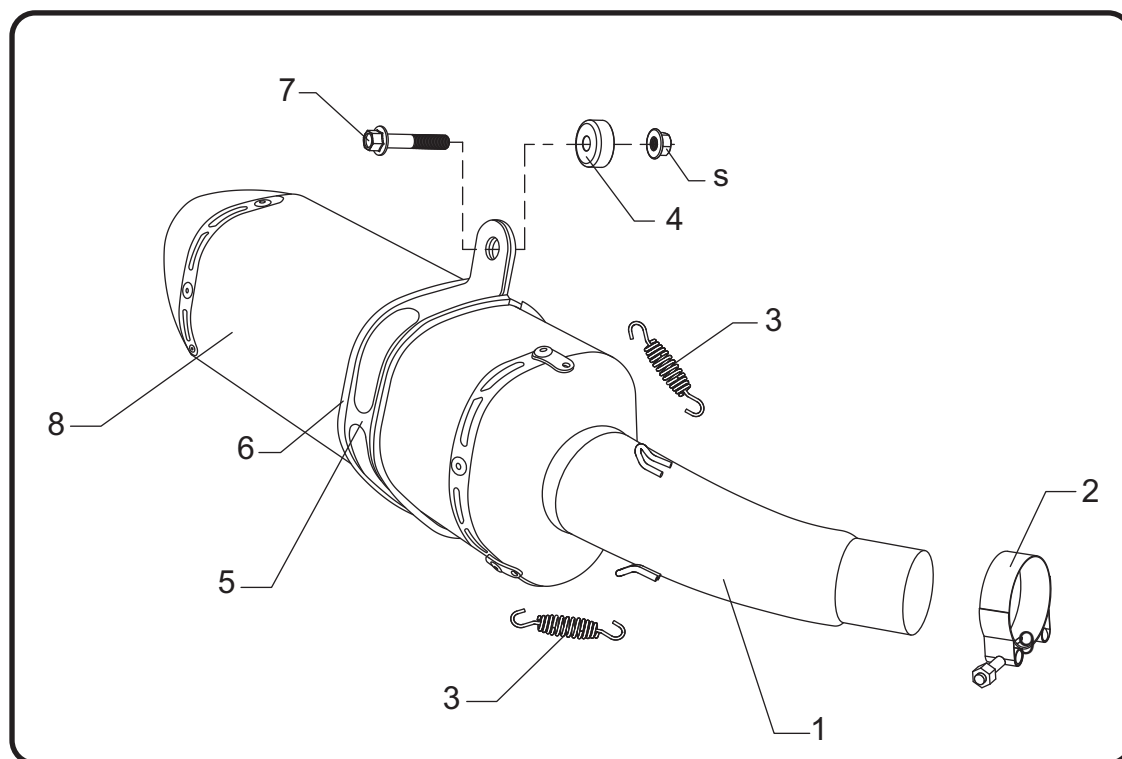


You must know how to remove and replace your stock exhaust in order to install this product otherwise have it installed by a professional mechanic. Keep all stock parts from your existing system as some components may be necessary to install your new Yoshimura exhaust depending on the application. Read through all instructions before beginning installation. Exhaust system can be extremely hot. Let motorcycle cool down before beginning installation. Always wear hand and eye protection and take precautionary measures to avoid injury.



NOTE: IN THE STATE OF CALIFORNIA, IT IS ILLEGAL TO MODIFY THE EMISSION CONTROL SYSTEM, WHICH INCLUDES THE CARBURETORS OF ANY VEHICLE.

Assembly Diagram



No.	Item	Description	Qty.
1	14700-435	Yoshimura Tailpipe	1
2	22057	Exhaust Clamp	1
3	RACE-SPS-1	Medium Exhaust Spring	2
4	ALS-035	Aluminum Spacer	1
5	YM7M-MPCA(X)	Muffler Clamp	1
6	HT SHLDR77	Muffler Clamp Rubber Heatshield	1
7	M10X70H	10mm x 70mm Flanged Hex Head Bolt	1
8	****	Signature Series Muffler	1
**	ST-200	Spring Puller Tool	1
**	17029	Sticker Kit Sheet	1

(X) Used for stainless steel muffler canister.

**** Signature Series muffler replacement part number unavailable. Repair or replacement of Signature Series exhaust systems is only available directly through Yoshimura R&D of America, Inc.

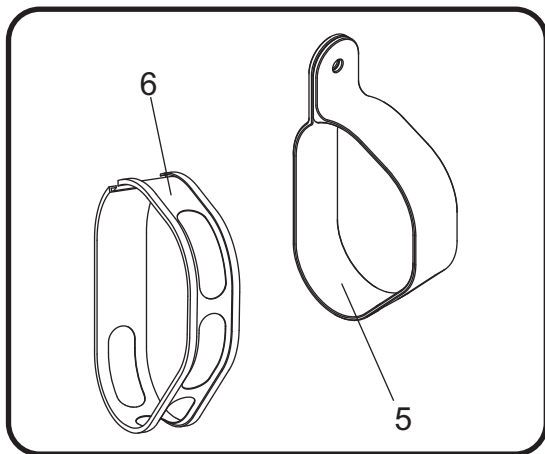
Removal

1. Remove the stock heatshield by removing the heatshield bolt and loosening hose clamp securing stock heatshield to header.
2. Loosen the stock exhaust clamp.
3. While securely supporting the muffler, remove the muffler mount bolt.
4. Carefully remove the muffler assembly from the stock header.

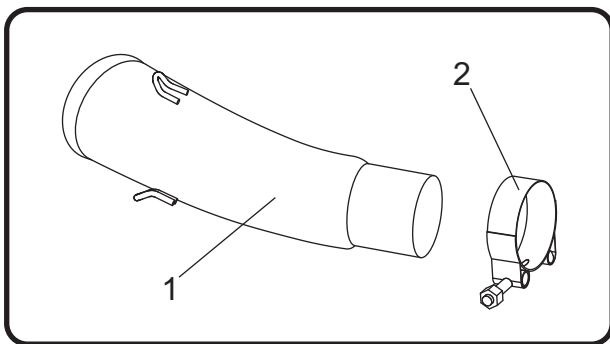
Note: The stock exhaust gasket will not be used with the Yoshimura Signature Series exhaust system.

Installation

1. Install (6) *HT SHLDR77* muffler clamp rubber heatshield onto (5) *YM7M-MPCA(X)* muffler clamp.



2. Slide (2) 22057 exhaust clamp over (1) 14700-435 Yoshimura tailpipe inlet.



3. Install Yoshimura muffler assembly by sliding (1) 14700-435 Yoshimura tailpipe over the stock header.

Note: Slide Yoshimura tailpipe 80mm over stock header.

4. Slide (5) *YM7M-MPCA(X)* muffler clamp over muffler and align to stock muffler mount. Secure using (7) *M10X70H* bolt, (4) *ALS-035* aluminum spacer, and stock nut. See assembly diagram for proper orientation and order of hardware.

Note¹: Muffler clamp and aluminum spacer mounts to the outside of the stock muffler mount.

Note²: If required, loosen the two right passenger foot peg bolts to achieve proper alignment with muffler clamp.

Note³: To adjust fitment, it may be necessary to rotate the tailpipe and/or the muffler independently until proper alignment is achieved.

5. Torque (7) *M10X70H* bolt to 30 Nm (3.0 kg-m, 22 ft-lb).
6. Torque (2) 22057 exhaust clamp to 8.5 Nm (0.85 kg-m, 6 ft-lb).
7. Before starting motorcycle, check for proper clearance between new exhaust system and rear suspension (i.e. tire, swing arm, brakes, rear shock, and etc.) If any problem is found, please carefully follow through the installation steps again. If problem still persists, please call Yoshimura Tech Department at (800) 634-9166 / in CA (909) 628-4722.
8. It is recommended that the muffler and tailpipe be wiped down with rubbing alcohol to remove oil and fingerprints. This will help prevent tarnishing of the finish after the exhaust is heated up.

Note: After starting motorcycle, it is normal for new exhaust system and muffler to emit smoke until oil residue burns off.

NOISE EMISSION WARRANTY

Yoshimura warrants that this exhaust system, at time of sale, meets all applicable U.S. E.P.A. Federal noise standards. This warranty extends to the first person who buys this exhaust system for purposes other than resale, and to all subsequent buyers. Warranty claims should be directed to Yoshimura R&D of America, Inc. 5420 Daniels St. Chino, CA 91710 | Tel (800) 634-9166

TAMPERING PROHIBITION

Federal law prohibits any modification to this exhaust system which causes the motorcycle to exceed the Federal noise standard. Use of the motorcycle with such a modified exhaust system is also prohibited.

Acts likely to constitute tampering include removal or puncturing the muffler, baffles, header pipes, or any other component which conducts exhaust gases.

WARNING: This product should be checked for repair or replacement if the motorcycle noise has increased significantly through use. Otherwise, the owner may become subject to penalties under state and local ordinances.