



YOSHIMURA

RESEARCH&DEVELOPMENT OF AMERICA, INC.

5420 DANIELS STREET STE A, CHINO CA., 91710 · (800) 634-9166 · (909) 628-4722 · FAX (909) 591-2198

www.yoshimura-rd.com

RACE SERIES

Qualified Manufacturer Declared "Modified Part"

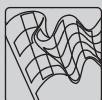
2012~2016

Kawasaki Ninja 650

146500D520 (SS/CF)

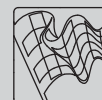
RS-4 Stainless Steel Full-System

FOR CLOSED COURSE COMPETITION ONLY; NOT INTENDED FOR STREET USE



Race Series systems are:

- NOT CARB/EPA tail-pipe emissions compliant.
- NOT street legal.
- For "Closed Course Competition" use only.

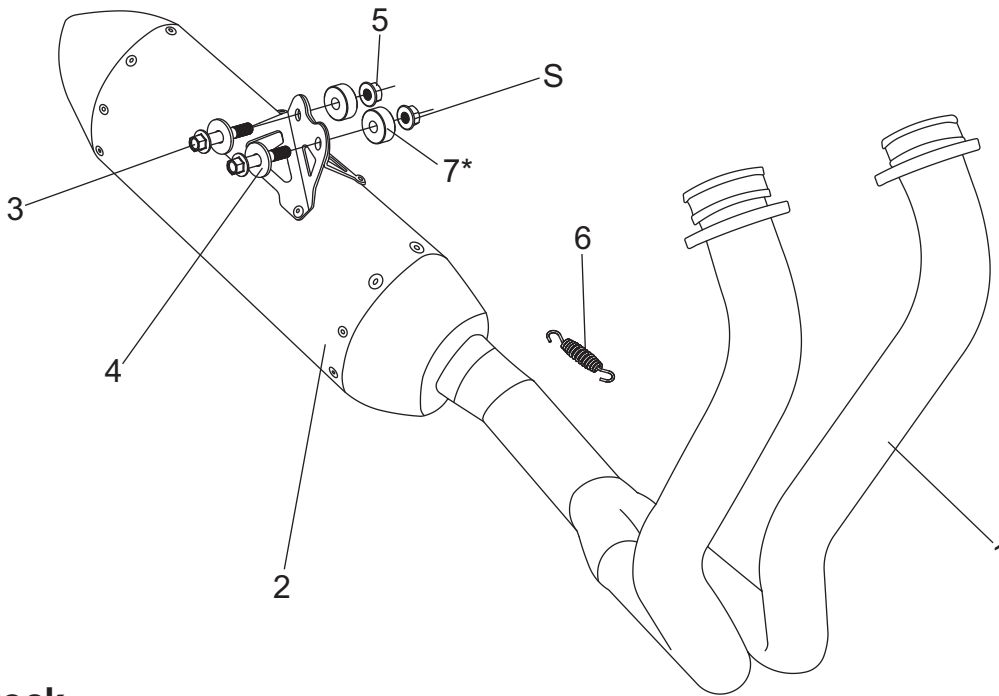


You must know how to remove and replace your stock exhaust in order to install this product otherwise have it installed by a professional mechanic. Keep all stock parts from your existing system as some components may be necessary to install your new Yoshimura exhaust depending on the application. Read through all instructions before beginning installation. Exhaust system can be extremely hot. Let motorcycle cool down before beginning installation. Always wear hand and eye protection and take precautionary measures to avoid injury.



NOTE: IN THE STATE OF CALIFORNIA, IT IS ILLEGAL TO MODIFY THE EMISSION CONTROL SYSTEM, WHICH INCLUDES THE CARBURETORS OF ANY VEHICLE.

Assembly Diagram



S = Stock

No.	Item	Description	Qty.
1	14650-401-1	Yoshimura Header	1
2	146500D520-RMA	Yoshimura Muffler Assembly	1
3	M8X45H	8mm x 45mm Flanged Hex Head Bolt	2
4	8MMWASHERL	8mm Large Washer	2
5	8MMNUT	8mm Flange Nut	1
6	RACE-SPX-1	Short Exhaust Spring	1
7*	8X10SPC	Aluminum Spacer	2
**	ST-200	Spring Puller Tool	1
**	17029	Sticker Kit Sheet	1

* Optional to install if additional clearance is required.
 ** Not shown in diagram.

Removal

1. Remove the four header nuts.
2. While securely supporting the stock muffler assembly, remove the two chassis mount bolts.

Note¹: The right side chassis mount rubber grommets and spacers will be re-used. Do not remove from frame.

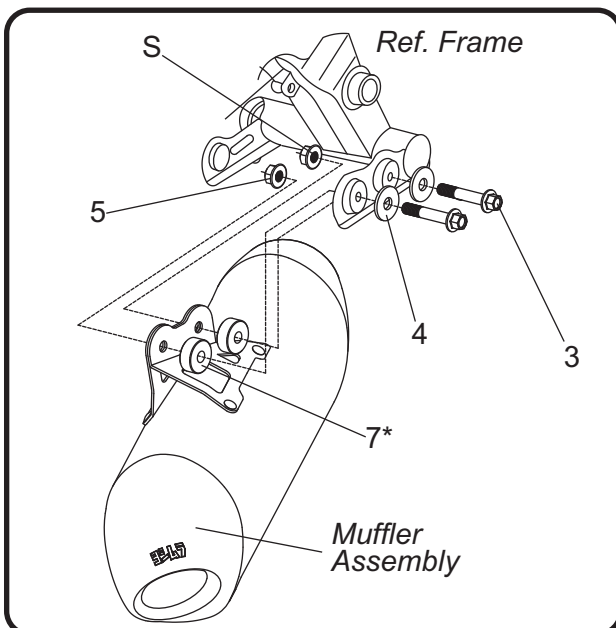
Note²: Remove the left side chassis mount rubber grommet and spacer as it will not be used.

3. Carefully remove the stock muffler assembly. The stock exhaust port gaskets will be re-used with the Yoshimura system. Inspect and replace if necessary.

Installation

1. Install (No. 1) *14650-401-1*, header using the stock header nuts. Do not tighten header nuts at this time.
2. Install Yoshimura muffler assembly onto (No. 1) *14650-401-1*, header outlet.
3. Secure muffler to the backside of chassis mount using (No. 3) *M8X45H*, bolt (No. 4) *8MMWASHERL*, and (No. 5) *8MMNUT*, flange nut.

Note: Install (No. 7*) *8X10SPC*, aluminum spacer if additional clearance is required between the rear tire and the Yoshimura muffler.



4. Install (No. 6) *RACE-SPX-1*, short exhaust spring between header and muffler tailpipe.
5. Torque (No. 3) *M8X45H*, muffler chassis mount bolts to factory specification.
6. Torque header nuts to factory specification.
7. Before starting vehicle, check for proper clearance between new exhaust system and rear suspension (i.e. tire, control arm, brakes, rear shock, and etc.) If any problem is found, please carefully follow through the installation steps again. If problem still persists, please call Yoshimura Tech Department at (800) 634-9166 / in CA (909) 628-4722.
8. It is recommended that the muffler and tailpipe be wiped down with rubbing alcohol to remove oil and fingerprints. This will help prevent tarnishing of the finish after the exhaust is heated up.

Note: After starting vehicle, it is normal for new exhaust system and muffler to emit smoke until oil residue burns off.