



YOSHIMURA

RESEARCH&DEVELOPMENT OF AMERICA, INC.

5420 DANIELS STREET STE A, CHINO CA., 91710 · (800) 634-9166 · (909) 628-4722 · FAX (909) 591-2198

www.yoshimura-rd.com

Signature Series

Qualified Manufacturer Declared "Replacement Part"

2009~2011

Kawasaki ZX6R

14640E0220 (CF/CF)

14640E0520 (SS/CF)

R-77 Stainless Steel Slip-On



Signature Series systems are:

- CARB/EPA tail-pipe emissions compliant.
- Marked with appropriate EPA noise labels.
- Independent laboratory tested for EPA new vehicle noise compliance.



✘ You must know how to remove and replace your stock exhaust in order to install this product otherwise have it installed by a professional mechanic. Keep all stock parts from your existing system as some components may be necessary to install your new Yoshimura exhaust depending on the application. Read through all instructions before beginning installation. Exhaust system can be extremely hot. Let motorcycle cool down before beginning installation. Always wear hand and eye protection and take precautionary measures to avoid injury. ✘

NOTE: IN THE STATE OF CALIFORNIA, IT IS ILLEGAL TO MODIFY THE EMISSION CONTROL SYSTEM, WHICH INCLUDES THE CARBURETORS OF ANY VEHICLE.

Caution: Exhaust system can be extremely hot. Let motorcycle cool down before beginning installation. Always wear hand and eye protection and take precautionary measures to avoid injury.

Note: Read through all instructions before beginning installation.

Tools Needed:

Metric Socket Set
3/8" ratchet and extension
Metric Combination Wrench Set
Metric Allen Wrench Set
Tamper Proof Torx Bit
Torque Wrench
Small Flat Head Screwdriver

Installation Steps:

1. Remove stock muffler.
 - Remove heatshield and loosen muffler clamp.
 - Remove exhaust valve cables from muffler.
 - Remove muffler mounting bolt.
 - Remove stock muffler from bike.
2. Remove bolt on stock clamp and install supplied spring hook tab. (See Fig. 3)
3. Reinstall stock clamp.
4. For ease of installation hook supplied exhaust spring into spring hook tab.
5. Insert rubber heatshielding into Yoshimura muffler clamp. (See parts diagram)
6. Slide clamp over muffler.
7. Install Yoshimura muffler/tailpipe assembly using stock hardware. Do not torque at this time. (Note: Yoshimura slip-on system retains stock gasket)
8. Test fit Yoshimura heatshield to match alignment with stock heatshield profile. Adjust tailpipe and/or muffler as necessary.
9. Torque stock clamp bolt to 12 lb-ft (16 Nm).
10. Torque muffler mounting bolt to 16 lb-ft (21.5 Nm).
11. Using supplied spring puller, install exhaust spring to connect Yoshimura tailpipe to the stock clamp.
12. Install Yoshimura heatshield using supplied bolts.
13. Check for proper clearance between new exhaust system and motorcycle. (i.e. Swing-arm, body work, etc.) If any problem is found, please carefully follow through the installation steps again. If problem still persists, please call Yoshimura tech department at (800)634-9166 / in CA (909)628-4722.



Fig. 1



Fig. 2

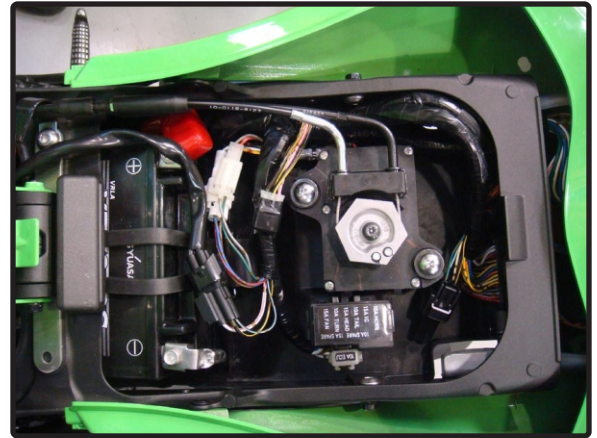
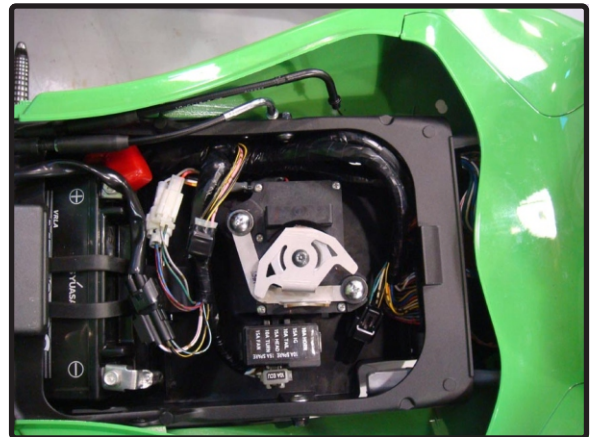


Fig. 3

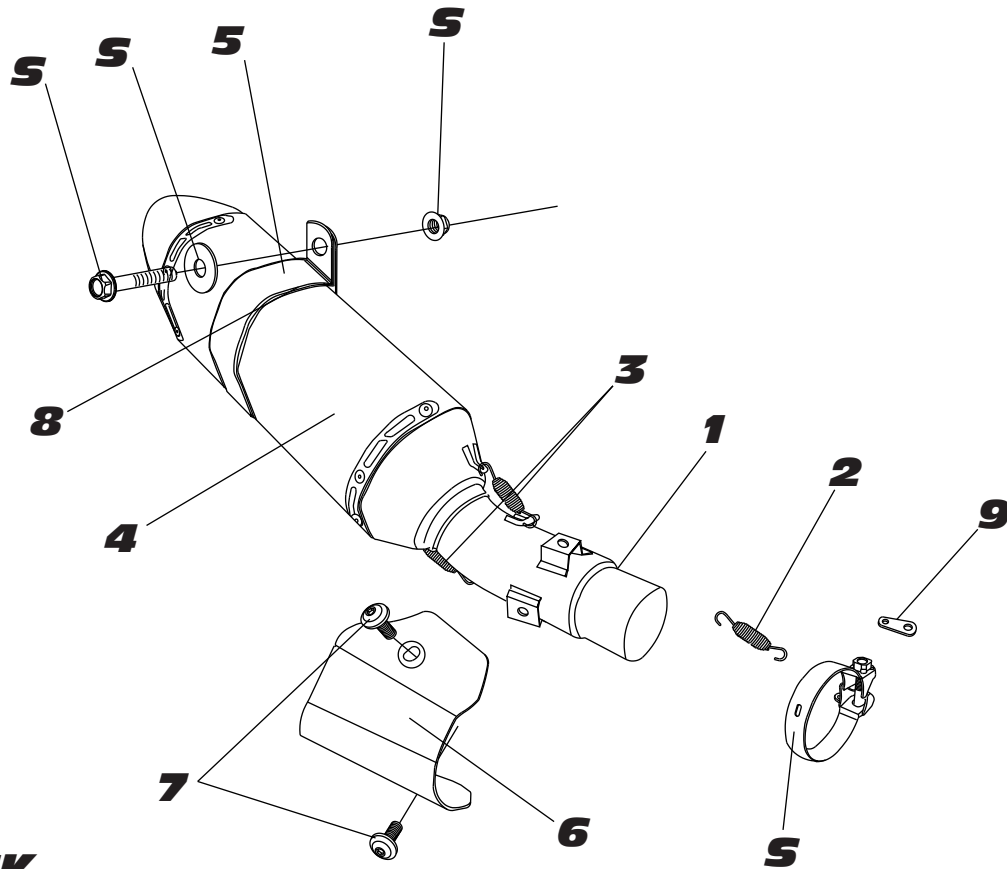
Note: After starting motorcycle, it is normal for new exhaust system and muffler to smoke until oil residue burns off.

Yoshimura Servo Motor Bracket Installation

1. Remove driver seat.
2. Take note of position of exhaust valve servo.
3. Remove cables.
4. Remove exhaust servo nut using tamper proof torx bit.
Note: Firmly hold servo pulley in place while loosening servo nut to prevent damage to servo motor.
5. Remove two phillips screws.
6. Install Yoshimura servo motor bracket using stock bolts.
(Shown in Fig. 2)
7. Install Yoshimura adapter plate on top of the servo pulley using stock bolt. Firmly hold servo pulley in place while tightening servo nut to prevent damage to servo motor.
8. Reinstall seat.

**Fig. 1****Fig. 2**

14640E0(220,520,520)



S=STOCK

Parts Diagram

NO.	DESCRIPTION	QTY	PART #
1	Yoshimura Stainless Steel tailpipe	1	1464-435
2	Medium Exhaust Spring	1	RACE-SPS-1
3	82mm Exhaust Spring	2	RACE-82MM
4	Yoshimura R77 Muffler w/ Carbon Fiber Sleeve and Carbon Fiber Endcap w/ Stainless Steel Sleeve and Carbon Fiber Endcap w/ Stainless Steel Sleeve and Stainless Steel Endcap	1	N/A
5	Stainless Steel Muffer Clamp Stainless Steel Sleeve use Carbon Fiber Sleeve use	1	1121-MPCR 1121-MPCR
6	Aluminum Heatshield	1	1464-HS
7	6mm x 8mm Flange Button Head Screw	2	RC116HSB-BK
8	Muffer Clamp Heat Insulator	1	HT SHLDR77
9	Exhaust Spring Hook Tab	1	1411-SH
**	ZX6R Servo Motor Bracket	1	1464-CKRBRKT
**	ZX6R Servo Motor Stopper Plate	1	1462-CKRPLT
**	Yoshimura Spring Puller Tool	1	ST-200
**	Yoshimura Vinyl Sticker	1	17029

NOISE EMISSION WARRANTY

Yoshimura warrants that this exhaust system, at time of sale, meets all applicable U.S. E.P.A. Federal noise standards. This warranty extends to the first person who buys this exhaust system for purposes other than resale, and to all subsequent buyers. Warranty claims should be directed to Yoshimura R&D of America, Inc.
5420 Daniels St. Chino, CA 91710 | Tel (800) 634-9166

TAMPERING PROHIBITION

Federal law prohibits any modification to this exhaust system which causes the motorcycle to exceed the Federal noise standard. Use of the motorcycle with such a modified exhaust system is also prohibited.

Acts likely to constitute tampering include removal or puncturing the muffler, baffles, header pipes, or any other component which conducts exhaust gases.

WARNING: This product should be checked for repair or replacement if the motorcycle noise has increased significantly through use. Otherwise, the owner may become subject to penalties under state and local ordinances.