



# YOSHIMURA

RESEARCH & DEVELOPMENT OF AMERICA, INC.

5420 DANIELS STREET STE A, CHINO CA., 91710 · (800) 634-9166 · (909) 628-4722 · FAX (909) 591-2198

[www.yoshimura-rd.com](http://www.yoshimura-rd.com)

## Street Series

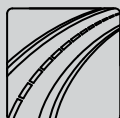
Qualified Manufacturer Declared "Replacement Part"

**2005~2006  
Kawasaki ZX-6R**

**1462272 (CF/CF)**

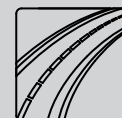
**1462275 (SS/CF)**

**RS-5 Stainless Steel Slip-On**



All Street Series systems are:

- Slip-on/Bolt-on applications that do not require tampering with the vehicle's emissions control system.
- CARB/EPA tail-pipe emissions compliant.
- Marked with appropriate EPA noise labels.
- Not tested for EPA new vehicle noise compliance.



✘ You must know how to remove and replace your stock exhaust in order to install this product otherwise have it installed by a professional mechanic. Keep all stock parts from your existing system as some components may be necessary to install your new Yoshimura exhaust depending on the application. Read through all instructions before beginning installation. Exhaust system can be extremely hot. Let motorcycle cool down before beginning installation. Always wear hand and eye protection and take precautionary measures to avoid injury. ✘

NOTE: IN THE STATE OF CALIFORNIA, IT IS ILLEGAL TO MODIFY THE EMISSION CONTROL SYSTEM, WHICH INCLUDES THE CARBURETORS OF ANY VEHICLE.

**Caution:** Exhaust system can be extremely hot. Let motorcycle cool down before beginning installation.

**Note:** Read through all instructions before beginning installation.

## Tools Needed:

8mm, 10mm, and 12mm sockets

Ratchet

12mm wrench

4mm and 5mm Allen wrench

Torque wrench

Sharp scissors & pen

## Installation Steps:

- 1 Remove right and left black plastic tank side panels (See Fig. 1 and 2).
- 2 Remove rider seat (One bolt on each side of seat) and passenger seat.
- 3 Remove rear cowling: Remove 7 bolts, 3 plastic snap fasteners, and 1 snap-out (See Fig. 3 and Fig. 4). Disconnect tail light connector and remove rear cowling.
- 4 Unbolt and remove rear fender and the left and right turn signal assemblies: Licence plate running light connector and turn signal connectors must be disconnected prior to removal.
- 5 Unbolt and remove black plastic midpipe heat shield (See Fig. 5).
- 6 Unbolt and remove black plastic tailpipe heat shield (See Fig. 6).
- 7 Remove black rubber insulators and then remove the metal heat shield that covers the tailpipe exhaust valve (see Fig. 7).
- 8 Disconnect tailpipe exhaust valve cables from tailpipe (see Fig. 8).

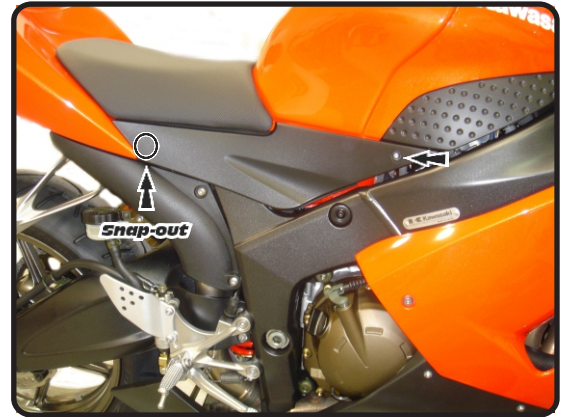


Fig. 1

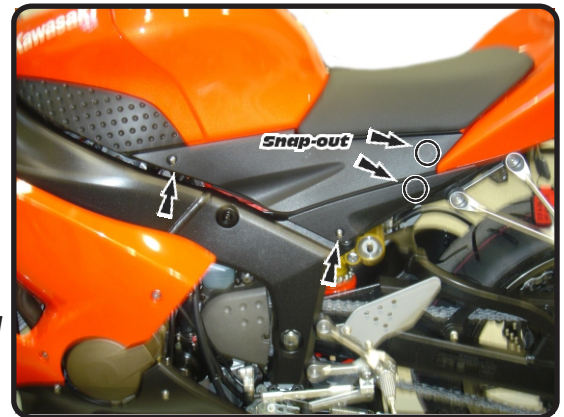


Fig. 2

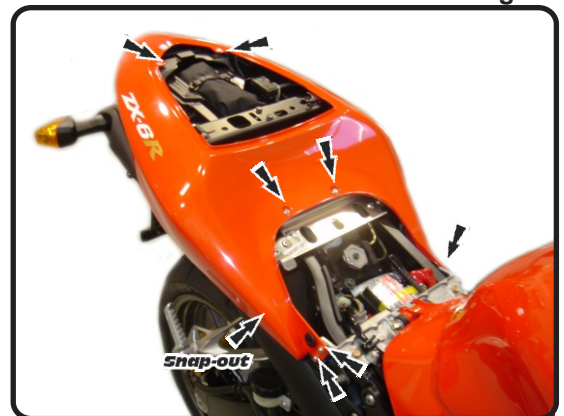


Fig. 3



Fig. 4



Fig. 5

- 9 Remove aluminum crosspiece from subframe (see Fig. 9).
- 10 Disconnect exhaust valve cables from exhaust valve actuator (electric servo motor, see Fig. 10) and remove hexagonal disc.

**WARNING!** Do not disconnect servo motor from ECU and do not allow the servo motor to rotate when removing the bolt that secures the hexagonal disc to the servo motor. The servo motor contains plastic gears. If the servo motor rotates while removing this bolt, the plastic gears inside the servo motor will strip.

- 11 Install Yoshimura bracket using stock bolts and washers (see Fig. 11). Be careful not to lose the spacers and washers below the servo motor.
- 12 Turn key quickly on and off to rotate servo motor until notch points directly toward the “V” in the Yoshimura EVA stopper bracket (see Fig. 11).
- 13 Place stock hexagonal disc and supplied washer onto servo motor with holes facing the “V” in the Yoshimura stopper bracket (see Fig. 12).
- 14 Place Yoshimura EVA stopper plate on top of hexagonal disc and secure with stock bolt (see Fig. 13).

**WARNING!** Do not allow the servo motor to rotate while tightening the stock bolt that secures the EVA stopper plate to the hexagonal disc. The servo motor contains plastic gears. If the servo motor rotates while tightening this bolt, the plastic gears inside the servo motor will strip.

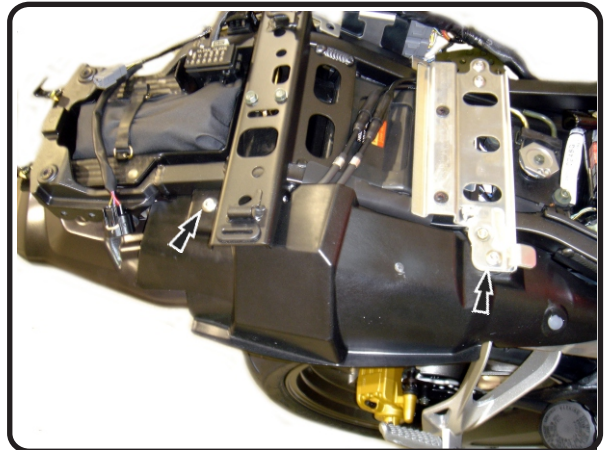


Fig. 6

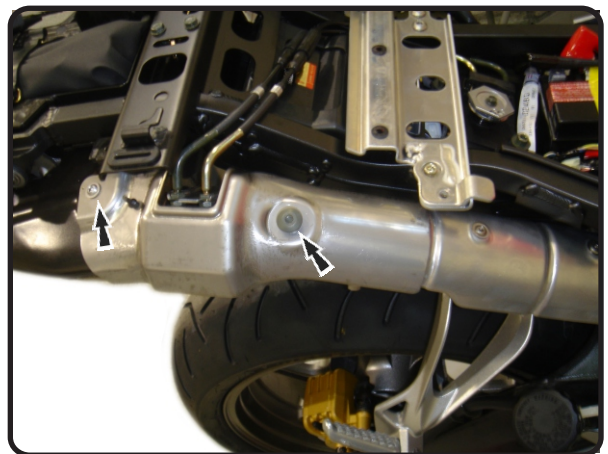


Fig. 7

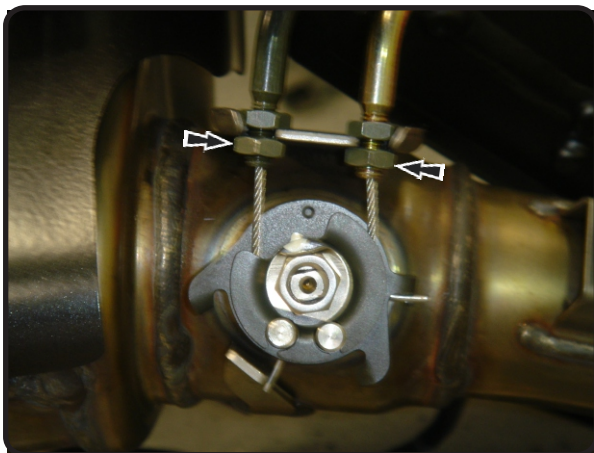


Fig. 8

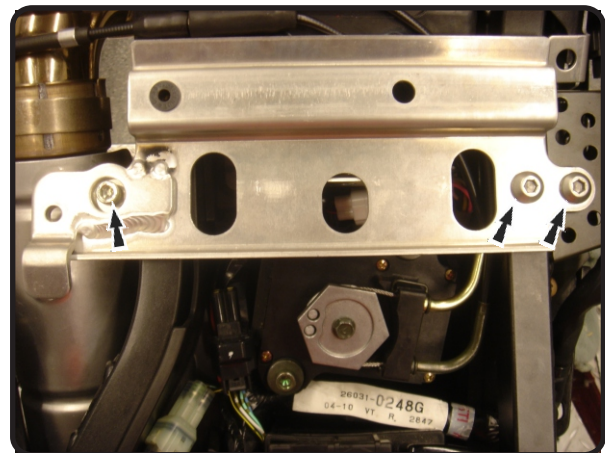


Fig. 9

- 15 Reinstall aluminum crosspiece onto subframe.
- 16 Start the bike and watch the instrument cluster. The "FI" light should not light up. If the "FI" light remains on after the bike is started, please carefully follow through the installation steps again (see Fig. 14 for location of "FI" light). If problem still persists, please call Yoshimura tech. dept. at (800)634-9166 / in CA (909)628-4722.

**Warning:** Keep fingers and other body parts away from the Yoshimura EVA (Exhaust Valve Actuator) Stopper when turning the key to the "ON" position and when the bike is running.

**Note:** The Yoshimura EVA (Exhaust Valve Actuator) Stopper only prevents problems resulting from the disconnection of the exhaust valve cables. Any other problems that would normally cause the "FI" light to be illuminated will continue to do so.

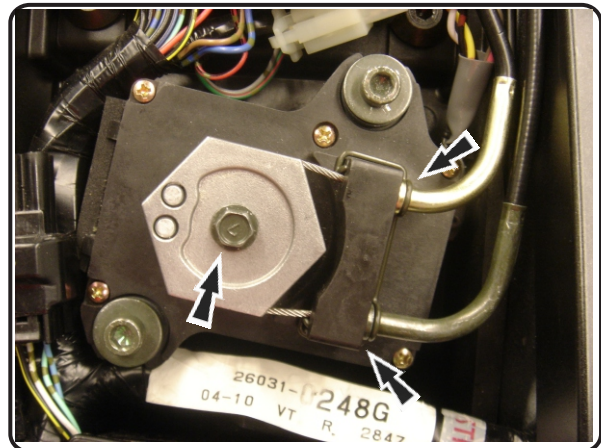


Fig. 10

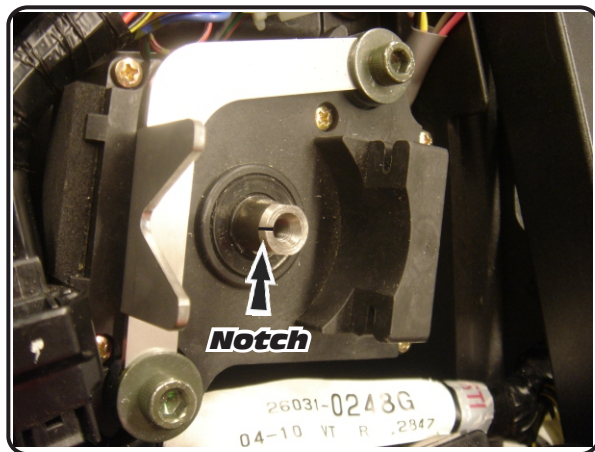


Fig. 11

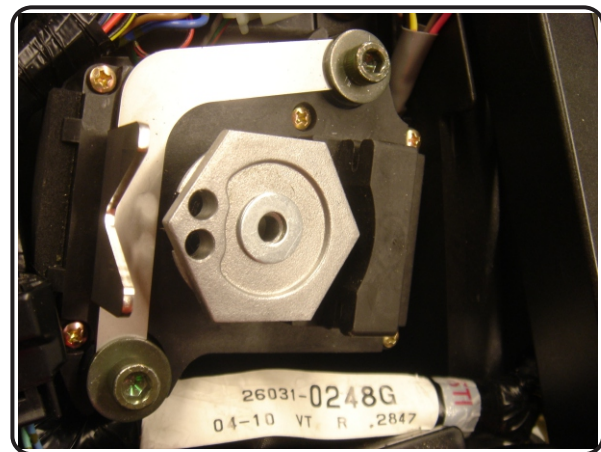


Fig. 12

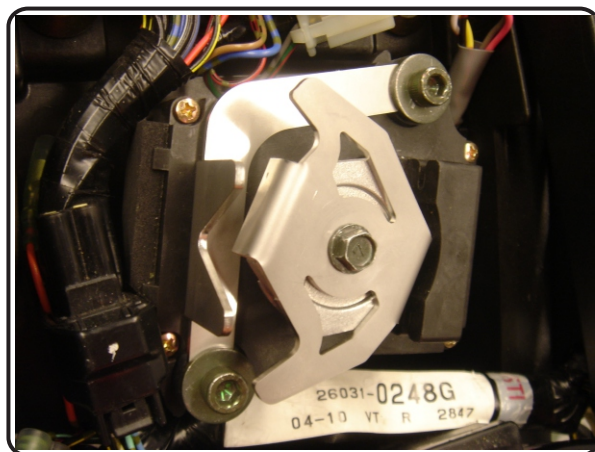


Fig. 13



Fig. 14

- 17 **Remove stock muffler:** Loosen midpipe to tailpipe collector clamp. Remove the two muffler mounting bolts while supporting the weight of the muffler (be careful, it's heavy). Remove muffler. Do not remove stock midpipe to tailpipe collector clamp and stock exhaust gasket as they will be used upon reinstallation. If stock exhaust gasket is damaged, replace with a new stock exhaust gasket.
- 18 **Install adhesive heat shield to rear under tail section** (see Page 6 for instructions).
- 19 **Slide Yoshimura tailpipe into stock midpipe using stock collector clamp and stock exhaust gasket.**
- 20 **Install supplied muffler clamp heat shield to inside of muffler clamp.** Slide muffler clamp onto muffler and line up muffler clamp ears with stock muffler mount location. Use stock bolts and washers and supplied nuts to secure Yoshimura muffler to the subframe, but leave loose at this time.
- 21 **Check alignment of exhaust, then torque collector clamp to 1.25 kg-m (9 lb-ft).**
- 22 **Torque muffler clamp bolts and nuts to 2.5 kg-m (18 lb-ft).**
- 23 **Attach rear fender and left and right turn signals to aluminum Yoshimura rear fender bracket** (See Fig. 15).
- 24 **Attach rear fender bracket with attached rear fender and turn signals to original mounting points on subframe** (See Fig. 16).
- 25 **Reinstall midpipe heat shield, rear cowling, and seats in reverse order of disassembly.** Check for proper operation of tail light, brake light, and turn signals.
- 26 **It is recommended that the muffler and tailpipe be wiped down with rubbing alcohol to remove oil and fingerprints.** This will help prevent tarnishing of the finish after the exhaust is heated up.
- 27 **Check for proper clearance between new exhaust system and motorcycle.** (i.e. subframe, bodywork, etc.) If any problem is found, please carefully follow through the installation steps again. If problem still persists, please call Yoshimura tech. dept. at (800)634-9166 / in CA (909)628-4722



Fig. 15



Fig. 16

- 27 **Check for proper clearance between new exhaust system and motorcycle.** (i.e. subframe, bodywork, etc.) If any problem is found, please carefully follow through the installation steps again. If problem still persists, please call Yoshimura tech. dept. at (800)634-9166 / in CA (909)628-4722

**Note:** After starting motorcycle, it is normal for new exhaust system and muffler to smoke until oil residue burns off.

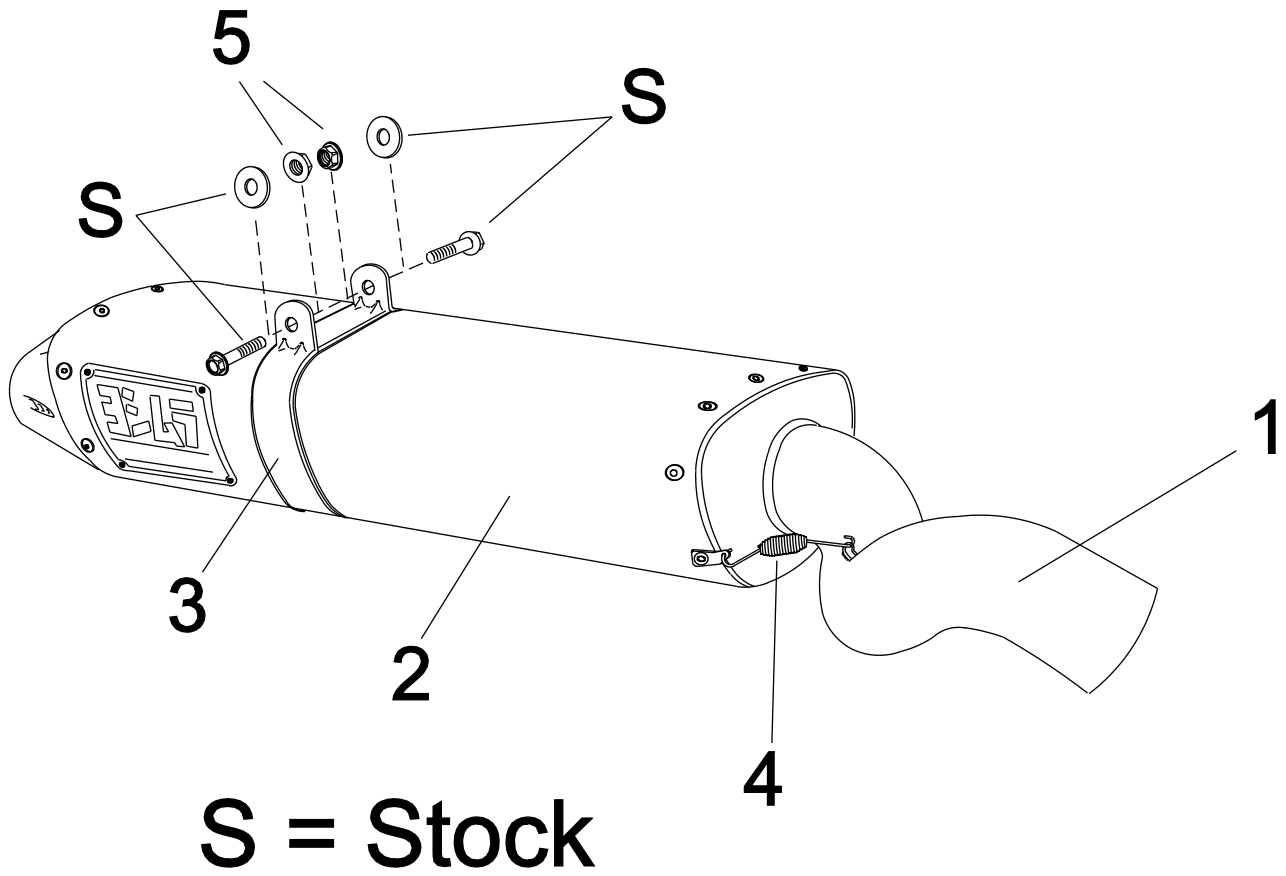


- 1 *Cut out supplied template .*
- 2 *Tape or firmly hold template to adhesive side (not foil side) of heatshield .*
- 3 *Trace outline of template on heatshield*
- 4 *Use scissors to cut heatshield to outline. When cutting, keep excess in one piece - the extra piece will be used later.*
- 5 *Use rubbing alcohol to clean area where heatshield will be applied.*
- 6 *Remove adhesive backing and apply to underside of rear fender assembly.*

*Note: Take a moment to examine how the heatshield lines up with the features of the undertail plastic before you begin.*

- 8 *After the heatshield is installed use the scraps to patch or cover any open areas.*

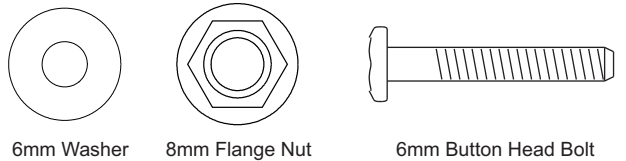
**#146222(2,5,7) / #146227(2,5,7)**



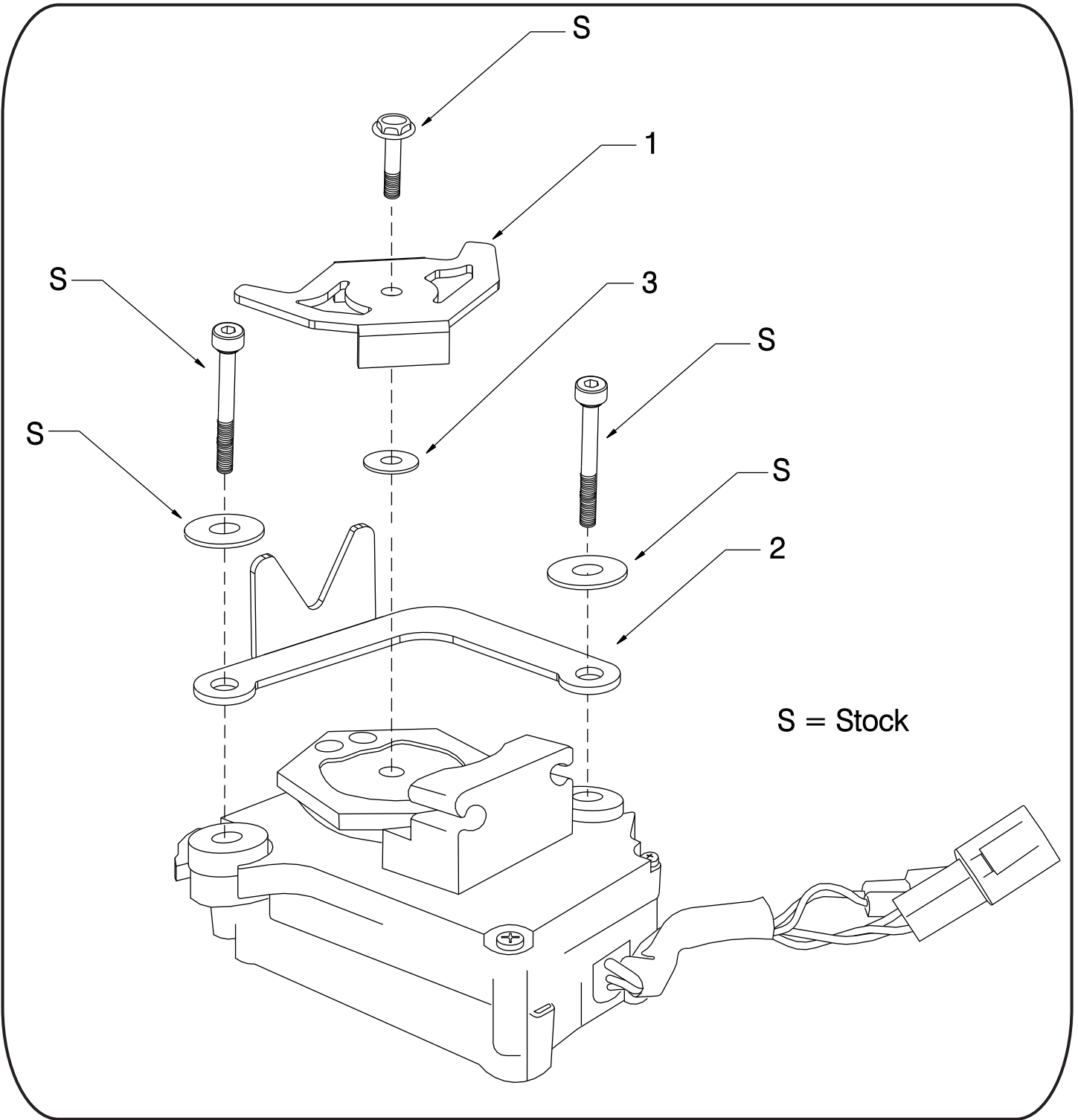
Parts Diagram

NO.	DESCRIPTION	QTY	PART #
1	Yoshimura Stainless Steel tailpipe	1	1462-435
2	RS-5 Muffler Assembly	1	**
3	Stainless Steel Muffler Clamp Stainless Steel or Titanium Sleeve use Carbon Fiber Sleeve use	1	CHS501S8AS(X) CHS501S8AS
4	Short Spring w/Insulator	2	RACE-SPX-1
5	8mm Nut	2	8MMNUT
**	6mm Button Head Bolt	4	M6X30BHS
**	Large 6mm Washer	4	6MMWASHERL
**	Muffler Clamp Heat Insulator	1	HT SHLDRS5
**	Aluminum Rear Fender Bracket	1	LPB200
**	Low Volume Insert Kit	1	INS-09-K
**	Adhesive Foil Heat Shield (8" x 16")	1	1225-00-01
**	Yoshimura Vinyl Sticker	1	17029

**Nuts and Bolts Guide (Actual Size):**



**Yoshimura EVA Stopper**



S = Stock

Parts Diagram

NO.	DESCRIPTION	QTY	PART #
1	EVA Stopper Plate	1	1462-CKRPLT
2	EVA Stopper Bracket	1	1462-CKRBRKT
3	Large 6mm Washer	1	6MMWASHERL