



YOSHIMURA

RESEARCH & DEVELOPMENT OF AMERICA, INC.

5420 DANIELS STREET STE A, CHINO CA., 91710 · (800) 634-9166 · (909) 628-4722 · FAX (909) 591-2198

www.yoshimura-rd.com

RACE SERIES

Qualified Manufacturer Declared "Modified Part"

**2009~2011
Kawasaki Ninja 650R**

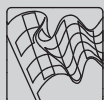
**2009
Kawasaki ER-6n**

1440272 (CF/CF)

1440275 (SS/CF)

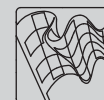
TRC Stainless Steel Slip-On

FOR CLOSED COURSE COMPETITION ONLY; NOT INTENDED FOR STREET USE



Race Series systems are:

- NOT CARB/EPA tail-pipe emissions compliant.
- NOT street legal.
- For "Closed Course Competition" use only.



You must know how to remove and replace your stock exhaust in order to install this product otherwise have it installed by a professional mechanic. Keep all stock parts from your existing system as some components may be necessary to install your new Yoshimura exhaust depending on the application. Read through all instructions before beginning installation. Exhaust system can be extremely hot. Let motorcycle cool down before beginning installation. Always wear hand and eye protection and take precautionary measures to avoid injury.



NOTE: IN THE STATE OF CALIFORNIA, IT IS ILLEGAL TO MODIFY THE EMISSION CONTROL SYSTEM, WHICH INCLUDES THE CARBURETORS OF ANY VEHICLE.

Caution: Exhaust system can be extremely hot. Let motorcycle cool down before beginning installation. Always wear hand and eye protection and take precautionary measures to avoid injury.

Note: Read through all instructions before beginning installation.

Tools Needed:

Metric Socket Set
Ratchet and Extension
Metric Combination Wrench Set
Metric Allen Wrench Set
Torque Wrench

Installation Steps:

1. Remove stock muffler.
 - Remove lower right cowl. (Note: ER6N does not require cowl removal)
 - Loosen stock muffler clamp.
 - Remove header bolts and remove header.
Note: Header must be removed to provide clearance for stock muffler removal.
 - Remove plastic right rearsset cover, rearsset, and aluminum guard.
 - Remove two bolts and remove under belly muffler
2. Install Yoshimura Slip-on
 - Reinstall right rearsset and cover.
 - Re-install stock header.
 - Insert rubber grommet and spacer into Yoshimura bracket. (See parts diagram for orientation)
 - Remove rear master cylinder bolts. (Fig. 1)
 - Insert Yoshimura bracket behind the master cylinder. Bolt together using supplied bolts and nuts. (Fig. 2)
 - Torque master cylinder bolts to 12 lb-ft (16.5 N-m).
 - Insert supplied collector clamp over Yoshimura tailpipe.
 - Install muffler using supplied bolt and washer.
 - Torque muffler clamp to 14 lb-ft (18.5 N-m).
 - Torque muffler mounting bolt to 18 lb-ft (23.5 N-m). (Fig. 3)
3. Check for proper clearance between new exhaust system and motorcycle. (i.e. Swing-arm, body work, etc.) If any problem is found, please carefully follow through the installation steps again. If problem still persists, please call Yoshimura technical department at (800)634-9166 / in CA (909)628-4722.



Fig. 1



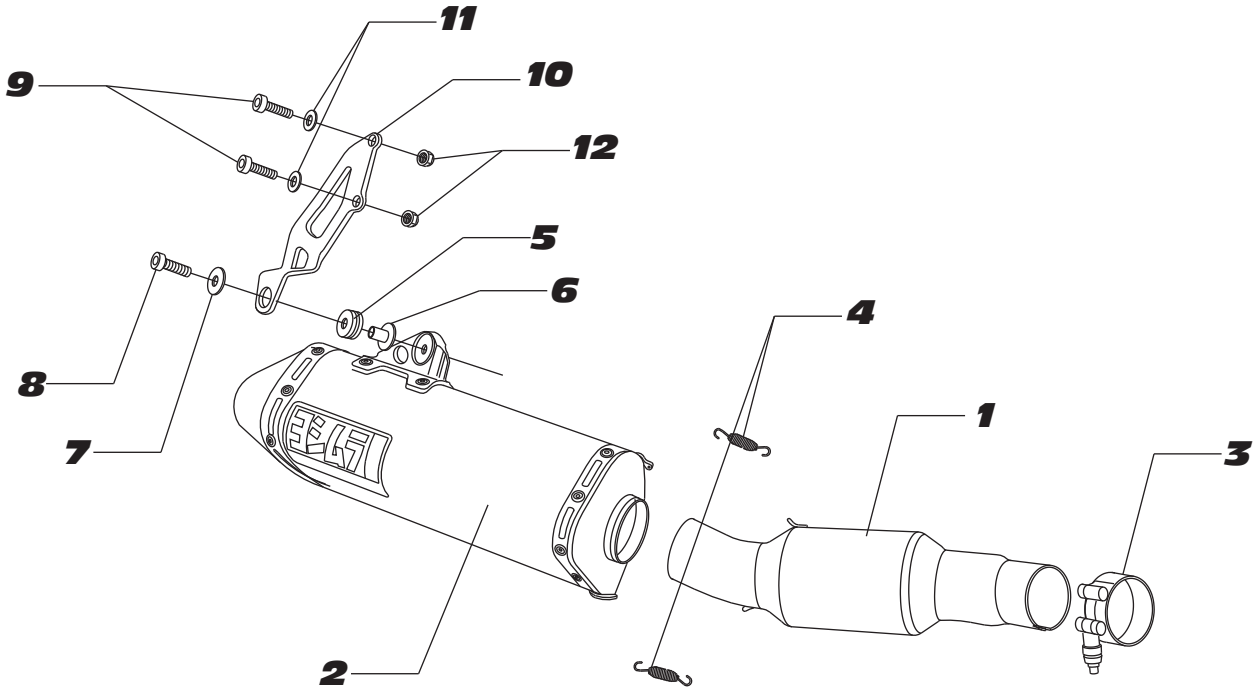
Fig. 2



Fig. 3

Note: After starting motorcycle, it is normal for new exhaust system and muffler to smoke until oil residue burns off.

#144027(2,5)



S=STOCK

Parts Diagram

NO.	DESCRIPTION	QTY	PART #
1	Yoshimura Tailpipe	1	1440-435
2	Yoshimura TRC Muffler with Carbon Fiber TRC with Stainless Steel TRC	1	1435272-RMA 1435275-RMA
3	Collector Clamp	1	22059
4	Small Exhaust Spring	2	RACE-SPX-1
5	Rubber Grommet	1	Z1021
6	Aluminum Spacer	1	ALS-003
7	8mm Washer Large	1	8MMWASHERL
8	8mm X 25mm Socket Head Bolt	1	M8X25
9	8mm X 45mm Socket Head Bolt	2	M8X45-FT
10	1440 Muffler Bracket	1	1440-BKT
11	8mm Washer	2	8MMWASHER
12	8mm Lock Nut	2	8MMLN
**	Spring Puller Tool	1	ST-200
**	Low Volume Insert	1	TRC-INS-K
**	Yoshimura Vinyl Sticker	1	17029