



YOSHIMURA

RESEARCH&DEVELOPMENT OF AMERICA, INC.

5420 DANIELS STREET STE A, CHINO CA., 91710 · (800) 634-9166 · (909) 628-4722 · FAX (909) 591-2198

www.yoshimura-rd.com

RACE SERIES

Qualified Manufacturer Declared "Modified Part"

2006~2013

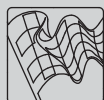
Kawasaki ZX-14

1426002 (CF/CF)

1426005 (SS/CF)

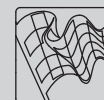
R-77 Stainless Steel Full-System

FOR CLOSED COURSE COMPETITION ONLY; NOT INTENDED FOR STREET USE



Race Series systems are:

- NOT CARB/EPA tail-pipe emissions compliant.
- NOT street legal.
- For "Closed Course Competition" use only.



You must know how to remove and replace your stock exhaust in order to install this product otherwise have it installed by a professional mechanic. Keep all stock parts from your existing system as some components may be necessary to install your new Yoshimura exhaust depending on the application. Read through all instructions before beginning installation. Exhaust system can be extremely hot. Let motorcycle cool down before beginning installation. Always wear hand and eye protection and take precautionary measures to avoid injury.



NOTE: IN THE STATE OF CALIFORNIA, IT IS ILLEGAL TO MODIFY THE EMISSION CONTROL SYSTEM, WHICH INCLUDES THE CARBURETORS OF ANY VEHICLE.

Caution: *Exhaust system can be extremely hot. Let motorcycle cool down before beginning installation.*

Note: *Read through all instructions before beginning installation.*

Tools Needed:

Metric Socket Set

3/8" Ratchet and Extension

Metric Allen Wrench Set

Torque Wrench

Installation Steps:

- 1 Remove left and right stock mufflers and tailpipes.
- 2 Remove left and right fairings.
- 3 Remove lower radiator support bracket. Tilt radiator forward to ease removal of stock header.
- 4 Remove stock header and exhaust port gaskets (stock exhaust port gaskets will not be used with Yoshimura full system).
- 5 Install Yoshimura manifolds and flanges into exhaust ports using stock header nuts (see Fig. 1 on page 2 for correct flange orientation).
- 6 Torque stock header nuts to 1.1 kgf-m (8.0 lb-ft).
- 7 Install Yoshimura header by connecting one header leg at a time from one side of the engine to the other.
- 8 Connect header to flanges using the supplied medium exhaust springs. Hook one end of the spring into the hole in the flange and pull the other end of the spring over the header's spring hook using the supplied spring puller tool (see Fig. 1 on page 2 for spring hole location).
- 9 Using a soft face mallet, gently tap header to fully seat each header leg onto its respective manifold.
- 10 Apply rubber heat insulator to inside of muffler clamp and slide muffler clamp onto muffler.

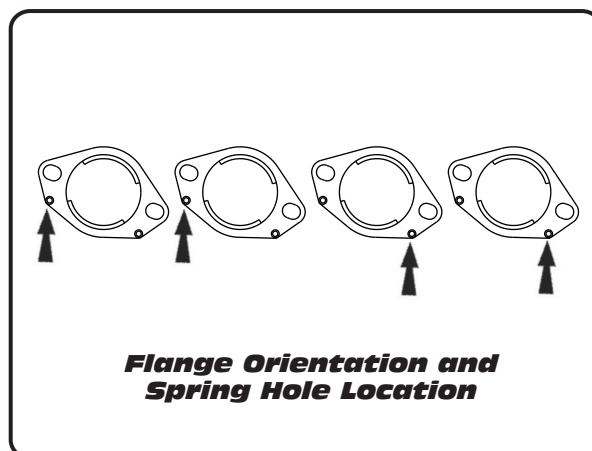
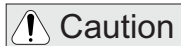


Fig. 1

- 11 Install Yoshimura muffler and tailpipe using stock hardware (extra large stock muffler mount washer will not be used). For 2008 model years, use supplied 8mm nut for tailpipe mount.

NOTE: Yoshimura muffler clamp mounts on the inside of the stock muffler mounting location. Yoshimura tailpipe bracket mounts on the inside of the stock tailpipe mount location. (See Figure 2)

- 12 Connect Yoshimura tailpipe to Yoshimura header using the supplied medium exhaust springs. 2008-11 models use upper collector spring mount. 2006-07 models use lower collector spring mount. (See Figure 3)
- 13 Torque muffler mounting bolts and tailpipe mounting bolts to 2.5 kgf-m (18 lb-ft).
- 14 It is recommended that the entire exhaust system be wiped down with rubbing alcohol to remove oil and fingerprints. This will help prevent tarnishing of the finish after the exhaust is heated up.
- 15 Reinstall lower radiator support bracket.
- 16 Reinstall left and right fairing.
- 17 Rotate rear axle so that the nut is on the left side.



Caution

****Failure to rotate axle could cause injury.****

- 18 Before starting motorcycle, check for proper clearance between new exhaust system and motorcycle (i.e. swing-arm, fairings etc.). If any problem is found, please carefully follow through the installation steps again. If problem still persists, please call Yoshimura technical department at (800) 634-9166 or (909) 628-4722 in California.

Note: After starting motorcycle, it is normal for new exhaust system to emit smoke until oil residue burns off.

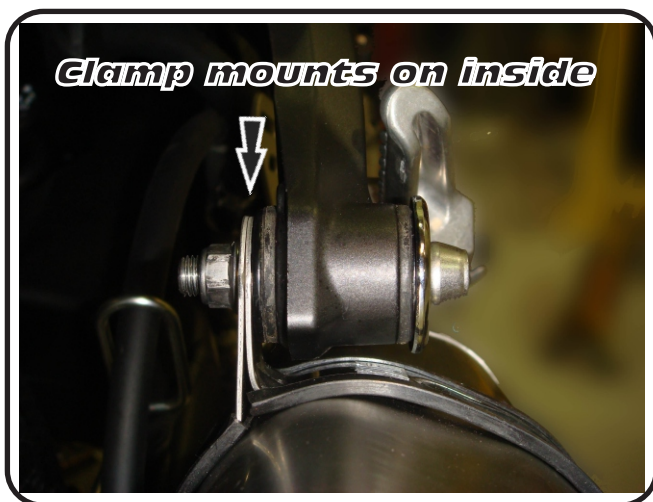
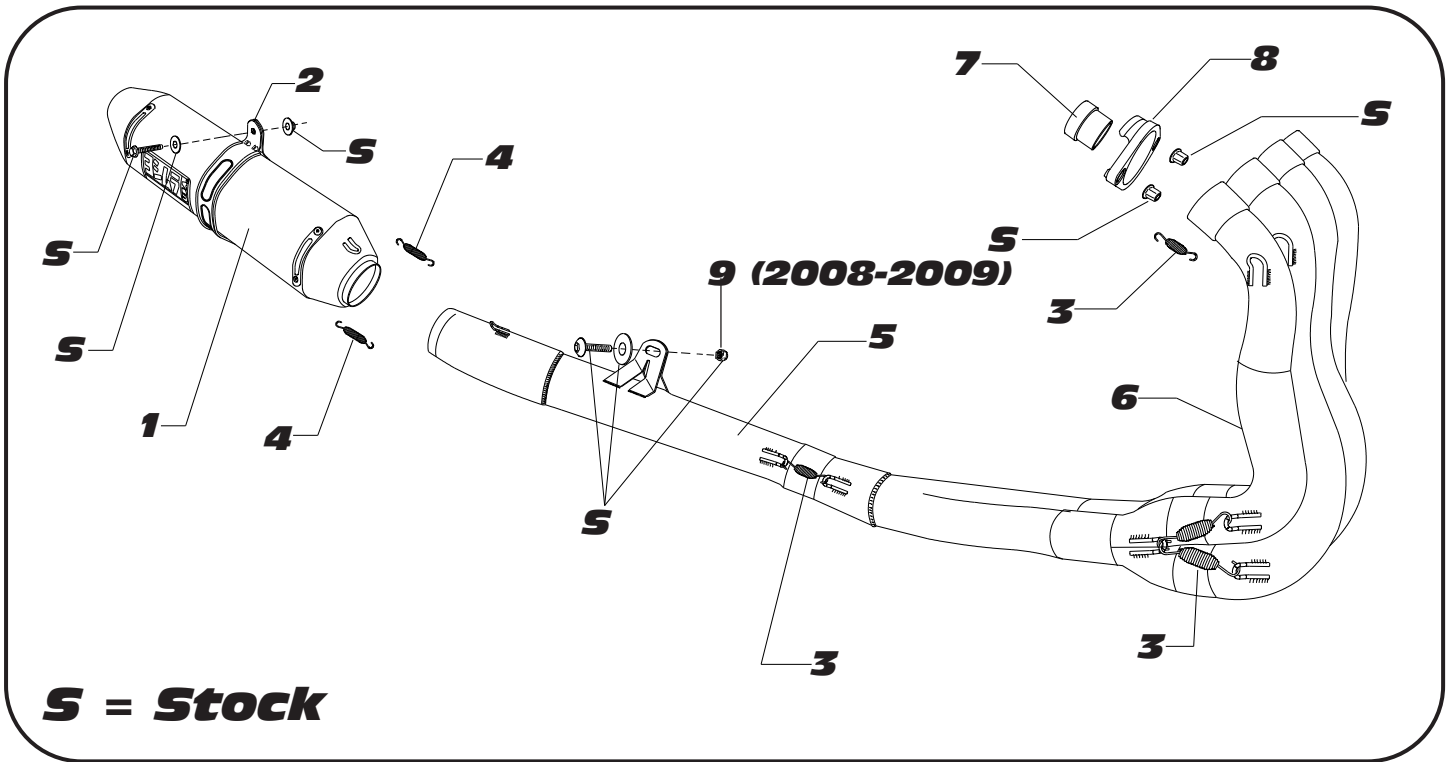


Fig. 2



Fig. 3

#142600(2,5,6,7)



Parts Diagram

NO.	DESCRIPTION	QTY	PART #
1	Yoshimura Muffer Assembly with Carbon Fiber Sleeve with SS Sleeve and SS Endcap with Stainless Steel Sleeve with Titanium Sleeve	1	CRR77146W SRR77146W-SS SRR77146W STR77146W
2	Stainless Steel Muffer Clamp Stainless Steel or Titanium Sleeve Carbon Fiber Sleeve uses	1	1426-MPCRX 1426-MPCR
3	Medium Race Exhaust Spring	10	RACE-SPS-1
4	82mm Race Exhaust Spring	2	RACE-82MM
5	Yoshimura Tailpipe	1	1426-419
6	Yoshimura Header	1	1426-404-1F
7	Yoshimura Stainless Steel Manifold	4	R795SDM
8	Yoshimura Aluminum Flange	4	CB916SDR-01
9	8mm Flange Nut	1	8MMNUT
**	O2 Bung Plug	1	M8x12H
**	Muffer Clamp Heat Insulator	1	HT SHLDR77
**	Spring Puller Tool	1	ST-200
**	Yoshimura Sticker Kit Sheet	1	17029