



YOSHIMURA

RESEARCH & DEVELOPMENT OF AMERICA, INC.

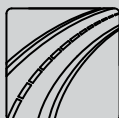
5420 DANIELS STREET STE A, CHINO CA., 91710 · (800) 634-9166 · (909) 628-4722 · FAX (909) 591-2198

www.yoshimura-rd.com

Street Series

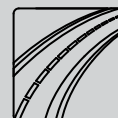
Qualified Manufacturer Declared "Replacement Part"

2012~2016
Kawasaki ZX-10R
14181BP520 (SS/CF)
14181MP720 (TI/CF)
Alpha Taper Slip-On



All Street Series systems are:

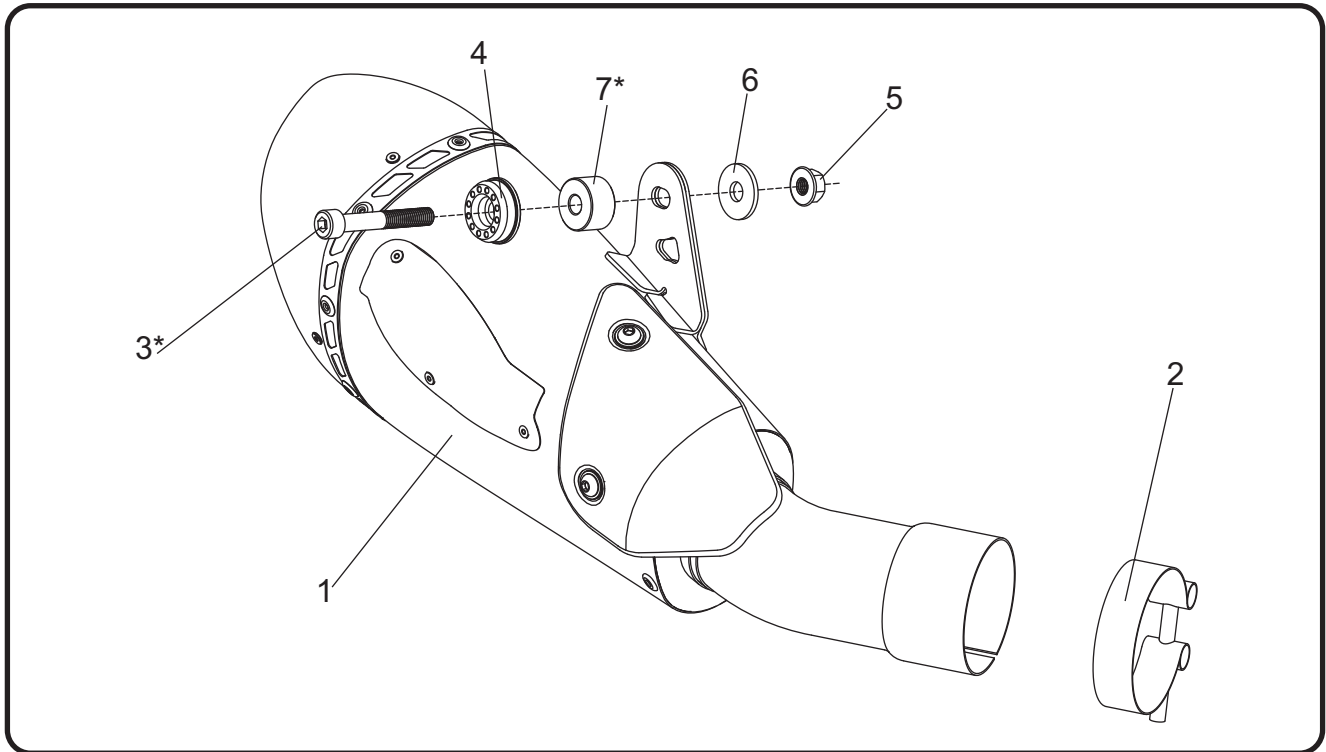
- Slip-on/Bolt-on applications that do not require tampering with the vehicle's emissions control system.
- CARB/EPA tail-pipe emissions compliant.
- Marked with appropriate EPA noise labels.
- Not tested for EPA new vehicle noise compliance.



✘ You must know how to remove and replace your stock exhaust in order to install this product otherwise have it installed by a professional mechanic. Keep all stock parts from your existing system as some components may be necessary to install your new Yoshimura exhaust depending on the application. Read through all instructions before beginning installation. Exhaust system can be extremely hot. Let motorcycle cool down before beginning installation. Always wear hand and eye protection and take precautionary measures to avoid injury. ✘

NOTE: IN THE STATE OF CALIFORNIA, IT IS ILLEGAL TO MODIFY THE EMISSION CONTROL SYSTEM, WHICH INCLUDES THE CARBURETORS OF ANY VEHICLE.

Assembly Diagram



No.	Item	Description	Qty.
1	14181BP520-RMA 14181MP720-RMA	Yoshimura Stainless Steel Muffler Assembly Yoshimura Titanium Muffler Assembly	1
2	20069	Exhaust Clamp	1
3	M8X40	8mm x 40mm Socket Head Cap Bolt	1
3*	M8X55	8mm x 55mm Socket Head Cap Bolt	1
4	M8ALCSW-00	8mm Aluminum Countersink Washer	1
5	8MMNUT	8mm Flange Nut	1
6	8MMWASHERL	8mm Washer, Large	1
7*	8X14SPC	Aluminum Spacer (for 2016 model)	1
**	INS-20-K	Low Volume Sound Insert	1
**	17029	Sticker Kit Sheet	1

* To be used on 2016 model.

** Not shown in diagram.

CAUTION: Exhaust system can be extremely hot. Let motorcycle cool down before beginning installation. Always wear hand and eye protection and take precautionary measures to avoid injury.

WARNING: Always properly support vehicle with a stand and/or lift when servicing or performing any work. Unstable vehicles may present dangerous conditions and may cause property damage and/or personal injury.

NOTE: Read through all instructions before beginning installation.

Removal

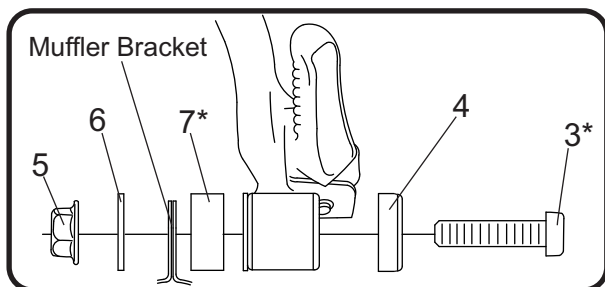
1. Loosen the exhaust clamp and while securely supporting the stock muffler assembly, remove the muffler mount bolt and carefully remove the stock muffler assembly.

Note: The stock exhaust gasket will be re-used with the Yoshimura system. Inspect and replace if necessary.

Installation

1. Install (No. 2) 20069, exhaust clamp onto (No. 1) muffler, inlet as shown on the diagram. Do not torque at this time.
2. Install (No. 1) muffler, over the stock pre-muffler chamber outlet and align muffler bracket to the backside of the stock muffler mount.
3. Secure (No. 1) muffler, using (No. 3) M8X40, 8mm bolt, (No. 4) M8ALCSW-00, countersink washer, (No. 6) 8MMWASHERL, washer and (No. 5) 8MMNUT, flange nut as shown below.

Note: For 2016 model, use (No. 3*) M8X55, 8mm x 55mm bolt and (No. 7*) 8X14SPC, aluminum spacer as shown.



4. Torque (No. 3*) M8X40 or M8X55, 8mm bolt to 23 Nm (2.3 kg-m, 17 ft-lbs).
5. Torque (No. 2) 20069, exhaust clamp to 8.5 Nm (0.86 kg-m, 6 ft-lbs).
6. Before starting vehicle, check for proper clearance between new exhaust system and rear suspension (i.e. tire, swingarm, brakes, rear shock, and etc.) If any problem is found, please carefully follow through the installation steps again. If problem still persists, please call Yoshimura Tech Department at (800) 634-9166 / in CA (909) 628-4722.
7. It is recommended that the muffler and tailpipe be wiped down with rubbing alcohol to remove oil and fingerprints. This will help prevent tarnishing of the finish after the exhaust is heated up.

Note: After starting vehicle, it is normal for new exhaust system and muffler to emit smoke until oil residue burns off.

Works Finish Care & Maintenance

Before starting vehicle, clean pipe thoroughly using a soft cloth and rubbing alcohol to remove any oil and finger prints.

The color of the exhaust will change once the system has gone through a heat cycle of 15 minutes or more. Color will vary depending on lean/rich conditions.

Clean using a soft cloth and soap. Do not use abrasive materials as it will scratch the surface.

Surface reconditioning services are available to remove scratches and undesirable discoloration due to extreme heat. Contact Yoshimura Tech Department at (800) 634-9166 / in CA (909) 628-4722 for more information.