



# YOSHIMURA

RESEARCH & DEVELOPMENT OF AMERICA, INC.

5420 DANIELS STREET STE A, CHINO CA., 91710 · (800) 634-9166 · (909) 628-4722 · FAX (909) 591-2198

[www.yoshimura-rd.com](http://www.yoshimura-rd.com)

## Street Series

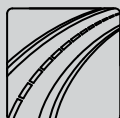
Qualified Manufacturer Declared "Replacement Part"

**2003~2004  
Honda CBR600RR**

**1225272 (CF/CF)**

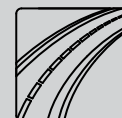
**1225275 (SS/CF)**

**RS-5 Stainless Steel Slip-On**



All Street Series systems are:

- Slip-on/Bolt-on applications that do not require tampering with the vehicle's emissions control system.
- CARB/EPA tail-pipe emissions compliant.
- Marked with appropriate EPA noise labels.
- Not tested for EPA new vehicle noise compliance.



*You must know how to remove and replace your stock exhaust in order to install this product otherwise have it installed by a professional mechanic. Keep all stock parts from your existing system as some components may be necessary to install your new Yoshimura exhaust depending on the application. Read through all instructions before beginning installation. Exhaust system can be extremely hot. Let motorcycle cool down before beginning installation. Always wear hand and eye protection and take precautionary measures to avoid injury.*



NOTE: IN THE STATE OF CALIFORNIA, IT IS ILLEGAL TO MODIFY THE EMISSION CONTROL SYSTEM, WHICH INCLUDES THE CARBURETORS OF ANY VEHICLE.

**Caution: Exhaust system can be extremely hot. Let motorcycle cool down before beginning installation.**

**Note: Read through all instructions before beginning installation.**

## Tools Needed:

8mm, 11mm, 12mm, 13mm sockets

Ratchet Wrench

12mm wrench

5mm, 8mm Allen wrench

Phillips screwdriver

Torque wrench

Sharp Scissors & Pen

## Installation Steps:

- 1 Remove rider seat (2 bolts under rear edges of seat) and passenger seat.
- 2 Remove right and left side black plastic tank side panels (remove top screw, pull front out to unclip and pull toward front of bike to remove) (See Fig. 1).
- 3 Remove seat cowling: Remove 4 bolts (See Fig. 1), pull cowling toward rear of bike and up (inner taillight bolts seat into rubber grommets on rear of subframe). Carefully pry right side of cowling over frame, then left side. Disconnect tail light connector (located in trunk) and remove cowling.
- 4 Unbolt black plastic heatshield and right side footpeg assembly. (See Fig. 2) Move footpeg assembly out of way (lay it across the passenger footpeg).
- 5 Unbolt and remove rear turn signal and fender assembly: rear turn signal connectors (on left rear side) must be disconnected prior to removing fender assembly. (See Fig. 3 & 4)
- 6 Loosen muffler mounting bracket nut and bolt (do not remove). Loosen stock chassis mount bolt (do not remove).
- 7 Loosen tailpipe to header collector clamp. While supporting muffler/tailpipe assembly (it's heavy) remove chassis mount bolt then muffler support bracket bolt and nut. Remove stock tailpipe and muffler.

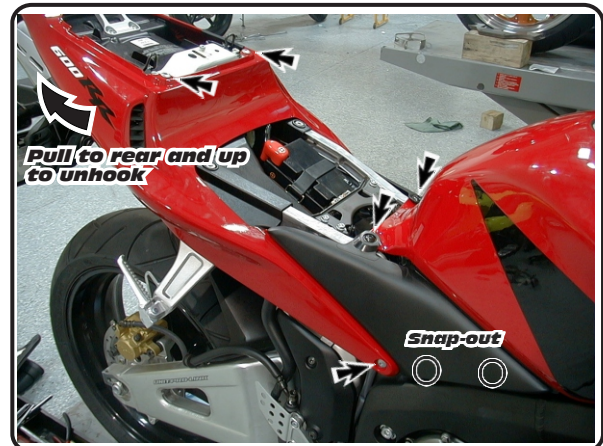


Fig. 1

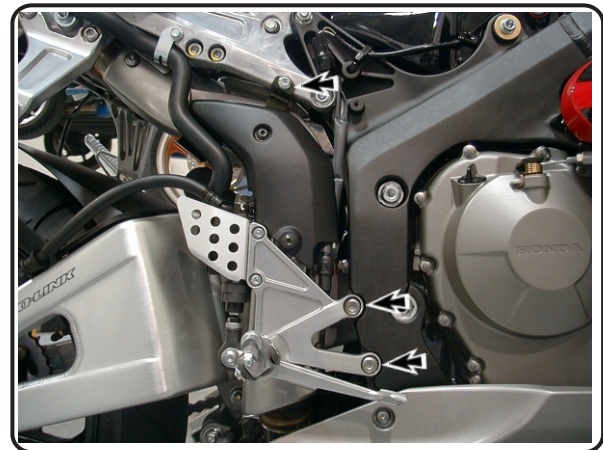


Fig. 2



Fig. 3

9 Remove stock heatshield and insulator from stock tailpipe and install on Yoshimura tailpipe using stock mounting hardware. (See Fig. 5 & 6)

10 Install adhesive heatshield to rear under tail section. (See Page 4 for instructions)

11 Slip supplied collector clamp over Yoshimura tailpipe and slide tailpipe onto stock header.

**NOTE:** The stock tailpipe gasket is not used. If it sticks to the stock header it must be removed before the Yoshimura tailpipe can be installed.

12 Install stock chassis mount bolt loosely to hold tailpipe in place.

13 Install supplied muffler clamp heatshield to inside of muffler clamp. Slide muffler clamp onto muffler and line up muffler clamp ears with stock muffler mount location. Install stock nut and bolt on clamp - leave loose at this time.

14 Check alignment of exhaust, then torque collector clamp to 1.25 kg-m (9 lb-ft).

15 Torque muffler clamp bolt and nut to 2.5 kg-m (18 lb-ft).

16 Torque chassis mount bolt to 2.5 kg-m (18 lb-ft).

17 Re-install rear fender, seat cowling, foot peg and seat in reverse order of disassembly. Check for proper operation of tail light, brake light, and turn signals before completion.

18 It is recommended that the muffler and tailpipe be wiped down with rubbing alcohol to remove oil and fingerprints. This will help prevent tarnishing of the finish after the exhaust is heated up.

19 Check for proper clearance between new exhaust system and motorcycle. (i.e. Swing-arm, body work, etc.) If any problem is found, please carefully follow through the installation steps again. If problem still persists, please call Yoshimura tech. dept. at (800)634-9166 / in CA (909)628-4722

**Note:** After starting motorcycle, it is normal for new exhaust system and muffler to emit smoke until oil residue burns off.



Fig. 4



Fig. 5

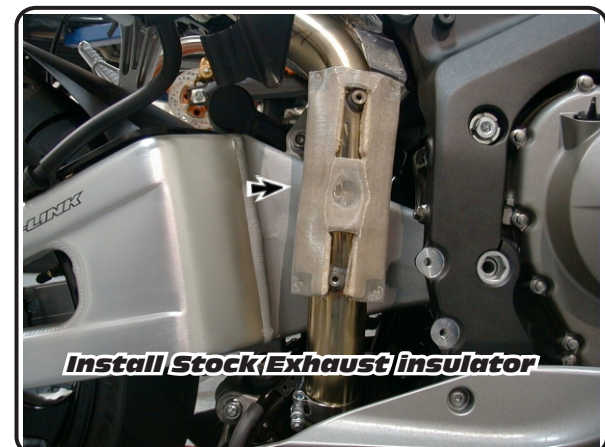


Fig. 6

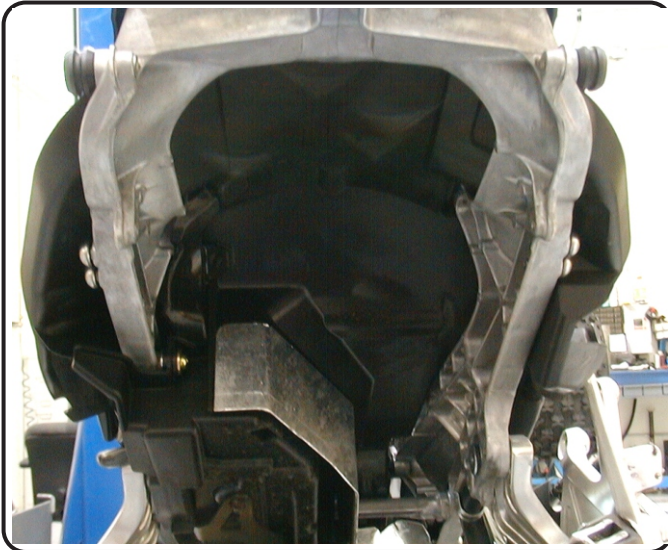


Fig. 7

- 1 *Cut out supplied template (mark template side as up in accordance with diagram).*
- 2 *Tape or firmly hold template to adhesive side (not foil side) of heatshield. Make sure template "up" side is correctly oriented.*
- 3 *Trace outline of template on heatshield*
- 4 *Use sissors to cut heatshield to outline. When cutting keep excess in one piece - the extra piece will be used later.*
- 5 *Use rubbing alcohol to clean area where heatshield will be applied.*
- 6 *Remove adhesive backing and apply to underside of rear fender assembly.*

*Note: Start by installing right side of the heatshield all the way forward. Then work to the left ensuring no air bubbles exist.*

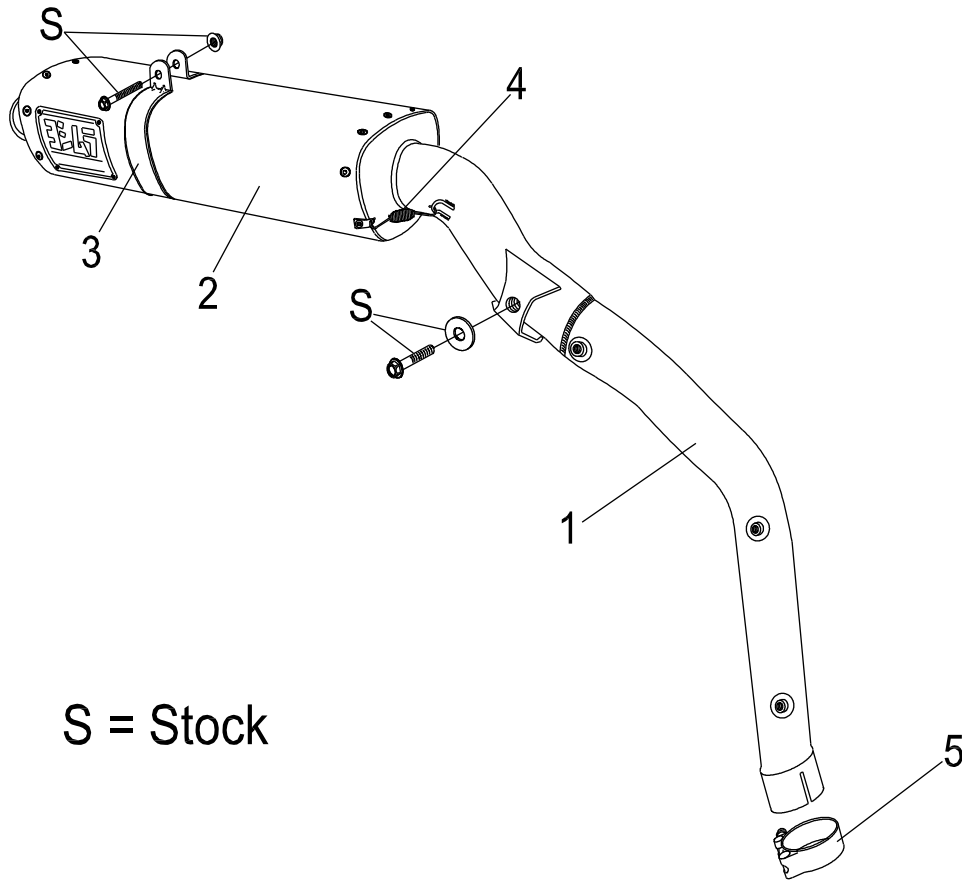
- 7 *After main piece of heatshield is installed use remainder of heatshield to patch or cover any open areas.*



Fig. 7



**#122522(2,5,7) / 122527(2,5,7)**



S = Stock

Parts Diagram

NO.	DESCRIPTION	QTY	PART #
1	Yoshimura Stainless Steel tailpipe	1	1225-435
2	RS-5 Muffler Assembly	1	**
3	Stainless Steel Muffler Clamp Stainless Steel and Titanium Sleeve uses Carbon Fiber Sleeve uses	1	CHS500S8ALX CHS500S8AL
4	2.5" Exhaust Spring	2	RACE-SPS-1
5	Stainless Steel Collector Clamp	1	200-60
**	Adhesive Back Foil Heatshield (8" X 16")	1	1225-00-01
**	Muffler Clamp Heat Insulator	1	HT SHLD5
**	Yoshimura Vinyl Sticker	1	17029
**	Foil Heatshield Template	1	**



***THIS SIDE UP***

***CBR600RR Heat Shield Template***

All 1225 Systems

All 1226 Systems