



# YOSHIMURA

RESEARCH&DEVELOPMENT OF AMERICA, INC.

5420 DANIELS STREET STE A, CHINO CA., 91710 · (800) 634-9166 · (909) 628-4722 · FAX (909) 591-2198

[www.yoshimura-rd.com](http://www.yoshimura-rd.com)

## RACE SERIES

Qualified Manufacturer Declared "Modified Part"

2004~2010

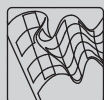
**SUZUKI SV650**

**1112262 (SS/CF)**

**1112265 (SS/SS)**

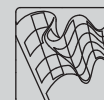
**TRS Stainless Steel Slip-On**

**FOR CLOSED COURSE COMPETITION ONLY; NOT INTENDED FOR STREET USE**



Race Series systems are:

- NOT CARB/EPA tail-pipe emissions compliant.
- NOT street legal.
- For "Closed Course Competition" use only.



✘ You must know how to remove and replace your stock exhaust in order to install this product otherwise have it installed by a professional mechanic. Keep all stock parts from your existing system as some components may be necessary to install your new Yoshimura exhaust depending on the application. Read through all instructions before beginning installation. Exhaust system can be extremely hot. Let motorcycle cool down before beginning installation. Always wear hand and eye protection and take precautionary measures to avoid injury. ✘

NOTE: IN THE STATE OF CALIFORNIA, IT IS ILLEGAL TO MODIFY THE EMISSION CONTROL SYSTEM, WHICH INCLUDES THE CARBURETORS OF ANY VEHICLE.

**Caution:** Exhaust system can be extremely hot. Let motorcycle cool down before beginning installation.

**Note:** Read through all instructions before beginning installation.

## Tools Needed:

12mm socket, 11mm (or 7/16") sockets  
3/8" ratchet and extension  
11mm, 12mm wrench  
6mm Allen wrench  
Torque wrench  
Hack saw or cutting tool  
Drill with 13/64" drill bit  
Safety glasses

## Installation Steps:

- 1 Remove stock front header (Unbolt exhaust flange and loosen exhaust clamp where stock front and rear header connect. See Fig.1 for fastener locations.)
- 2 Remove stock muffler and stock rear header. (Loosen exhaust clamp on rear stock header tube. Unbolt chassis and muffler mounts. See Fig.2 &3)
- 3 Replace old exhaust port gasket on front cylinder with new exhaust port gasket. (not supplied - Suzuki part no. 14181-22D01)
- 4 Use cutting tool to cut muffler 2 1/4" from the weld (See Fig 4 & 5). After muffler has been cut bevel or sand smooth any sharp edges or protuberances on pipe.
- 5 Re-install modified stock exhaust system in reverse order of steps 1 through 3. Torque chassis mount bolts to 2.5 kg-m (18 lb-ft).
- 6 Install supplied collector clamp over Slip-on mid-pipe with bolt to the inside and facing down. Install slip-on over cut portion of stock system. Ensure mid-pipe is fully seated on stock pipe.(See Fig. 7) Do not tighten clamp.
- 7 Apply heat insulator to inside of muffler clamp and slide clamp onto muffler. (Note direction of clamp in Fig. 6)
- 8 Mount muffler clamp to outside of stock muffler bracket using stock bolt, washers and nut. (See Fig. 6) Torque bolt to 2.5 kg-m (18 lb-ft).



Fig. 1

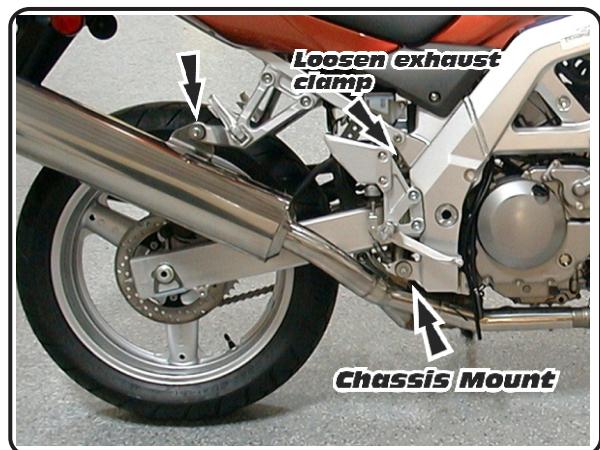


Fig. 2

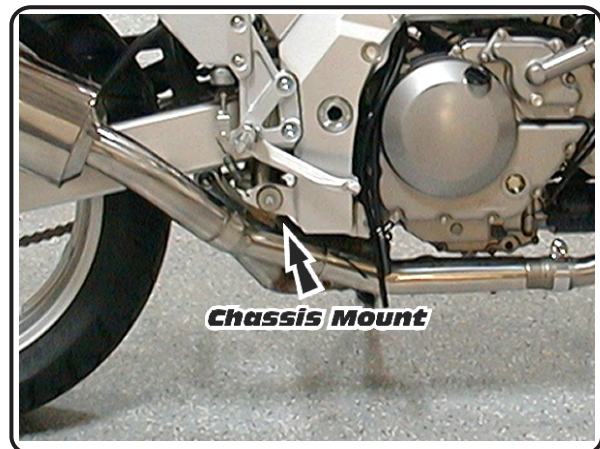


Fig. 3



9 Drill 13/64" hole in stock header and in the center of the hole on the mid-pipe (See Fig 7). Install supplied collector rivet so the head of the rivet is flush on the mid-pipe. Center collector clamp over rivet and torque clamp nut to 2.0 kg-m (14.5 lb-ft).

10 It is recommended that the entire exhaust system be wiped down with rubbing alcohol to remove oil and fingerprints. This will help prevent tarnishing of the finish after the exhaust is heated up.

11 Check for proper clearance between new exhaust system and motorcycle. (i.e. radiator, oil pan, swing-arm, etc.) If any problem is found, please carefully follow through the installation steps again. If problem still persists, please call Yoshimura tech. dept. at (800)634-9166 / in CA (909)628-4722

**Note:** After starting motorcycle, it is normal for new exhaust system and muffler to smoke until oil residue burns off.

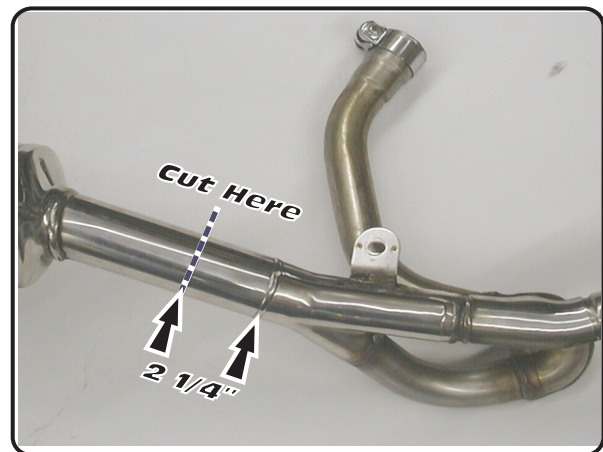


Fig. 4



Fig. 5

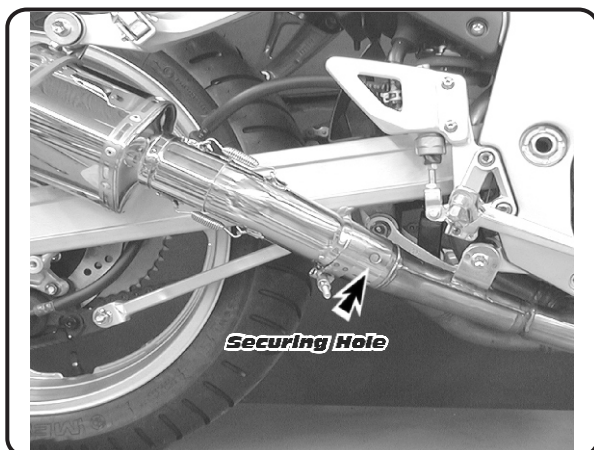


Fig. 7

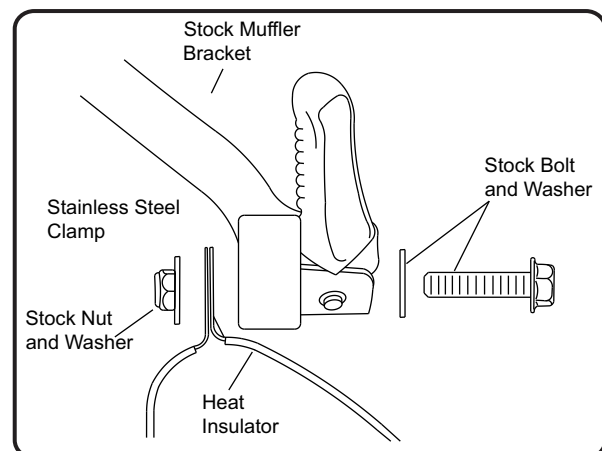
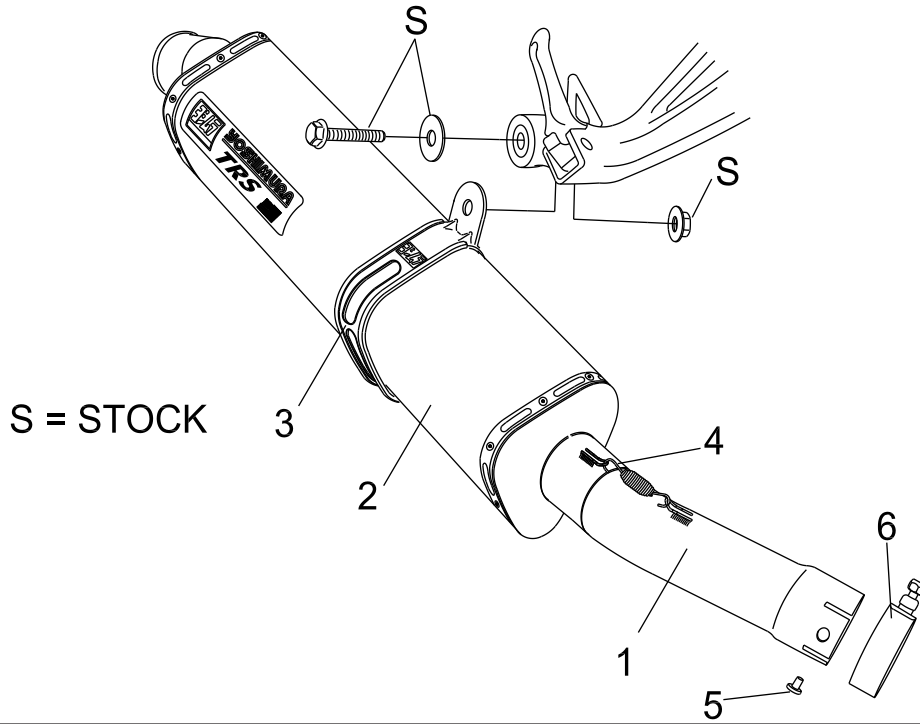


Fig. 6

**P/N 111226 (2,5,7)**



Parts Diagram

NO.	DESCRIPTION	QTY	PART #
1	Yoshimura Tailpipe Stainless Steel Race	1	1112-235
2	TRS Tri-Oval Muffer Assembly	1	**
3	Muffer Clamp Stainless Steel or Titanium Sleeve uses Carbon Fiber Sleeve uses	1	CTS081X CTS081
4	2.5" Exhaust Spring	2	RACE-SPS
5	Securing Rivet	1	S-RIVET
6	2.5" Exhaust Clamp	1	20067
**	Muffer Clamp Heat Insulator	1	HT SHLDTRS
**	TRS Insert Kit	1	TRS-INS-BK
**	Yoshimura Vinyl Sticker	1	17029