

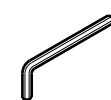
MORE POWER : LESS NOISE



Congratulations, you have purchased the finest exhaust system for your motorcycle on the market. Your Vance & Hines exhaust system is designed and crafted for maximum performance, a perfect fit, a great sound and unbeatable style. Please follow the installation instructions below and if you have any questions, please call our technical support line at (562) 926-5291.

Attention installer (if other than owner), please forward this instruction sheet to the owner of this product. These instructions contain valuable information to the end user.

**TOOLS
REQUIRED**



4, 5, 6 & 8mm
Allen Wrenches



5/16"
Nutdriver



1/2", 8, 10, 12,
& 14mm
Combination
wrenches



Flat blade
screwdriver



3/8" Ratchet,
Extensions,
1/2" 12 & 14mm
sockets

READ ALL INSTRUCTIONS BEFORE BEGINNING INSTALLATION

**STOCK EXHAUST
SYSTEM REMOVAL**

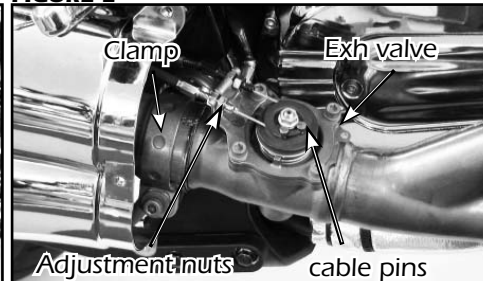
1. Cover the frame tube in front of the exhaust with duct tape or any suitable material to protect frame during exhaust removal.
2. Loosen and remove the two bolts on the rear brake pedal assembly and carefully lower the assembly out of the way.
3. Using a 14mm wrench, carefully remove the O2 sensor from the exhaust and disconnect it from the chassis wiring. Put it carefully aside for later re-installation.
4. Remove center heat shield by removing five screws on heat shield (Figure 1).
5. Remove cables from exposed exhaust valve by loosening the cable tension adjustment nuts, then remove the cables pins from the pulley (Figure 2).
6. Loosen the clamp that holds the muffler bodies to the collector. (Figure 2).
7. Remove the three screws holding the muffler bodies to the motorcycle chassis and carefully remove the muffler bodies from the motorcycle (may require assistance).
8. Remove the four nuts holding the exhaust headers to the cylinder heads. NOTE: It may be necessary to loosen the heat shield clamps to access the nuts on the front cylinder. Carefully remove header from the motorcycle (may require assistance).
9. Remove exhaust valve cables from the motorcycle by pulling one of the cables firmly to rotate linkage to gain a clear view of a cable pin. Push cable back to loosen cable and remove pin. Follow with the other cable.
10. Check the stock exhaust gaskets to be sure they are in good shape. If you have any doubts as to their condition, replace them.
11. Optional removal of heatwrap on the right side lower frame (Figure 3) (not required): Carefully remove middle tie wraps that holds heatwrap by pushing down lock pin, save them for reuse. Carefully cut tie wraps on both ends.
12. Remove heatwrap. Reinstall middle tie wraps to hold lines on frame. Use new tie wraps (supplied) to replace cut tie wraps on both ends.

FIGURE 1



Remove five screws

FIGURE 2



Clamp
Adjustment nuts
Exh valve
cable pins

FIGURE 3



Remove heatwrap (optional)
Cut tie wraps
on both ends
Remove middle
tie wraps

FIGURE 4

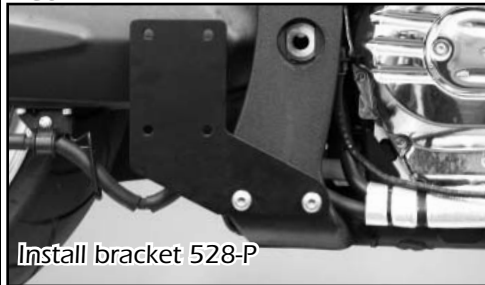


FIGURE 5

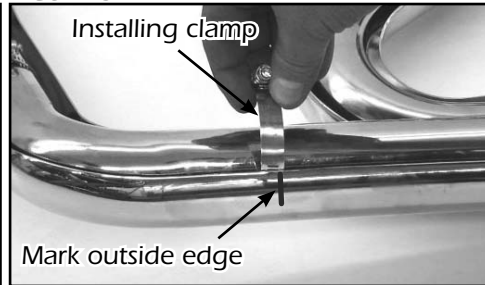


FIGURE 6

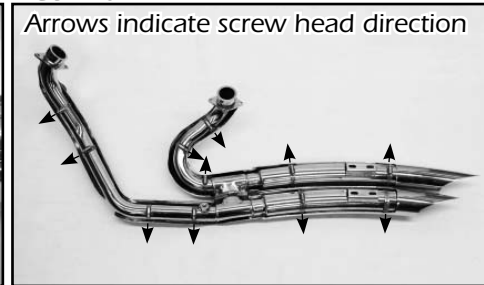


FIGURE 7



VANCE & HINES EXHAUST SYSTEM INSTALLATION

1. Install mounting bracket 528-P by using two 10mm x 25mm Button head bolts (supplied) to attach the bracket to the frame (Figure 4).
2. Remove head pipe assembly and head pipe heat shields from protective packaging. Place 1-2 layers of masking tape over black coated crossover cover (fastened between front and rear header pipes) for protection during installation. Place each heat shield on a non-abrasive surface such as a blanket or carpet. Using a felt tip pen, mark outside edge of each heat shield to show location of mounting clips that hose clamps will loop through (Figure 5).
3. Lay head pipes into their respective heat shields, with muffler body heat shields extending over the header heat shields.
4. Install #20 hose clamps (supplied) by feeding tail end of clamps into heat shield clips (Figure 5). Take note of clamp screw head direction (Figure 6). Screw head must be accessible when system is installed on motorcycle for adjustment purposes. NOTE: Do not tighten at this time.
5. Using #36 hose clamps (supplied), and following the same procedures as steps 2,3 & 4 install the muffler body heat shields onto muffler bodies.
6. Apply a small amount of anti-seize compound to the threads of the O2 sensor and install it into the new head pipe. NOTE: Be careful not to get anti-seize on sensor tip, it may affect sensor function.
7. Attach the 17" O2 wire extension (supplied) to the O2 sensor.
8. Using stock flange nuts, carefully install head pipe assembly into exhaust ports, starting with the rear cylinder. Assistance may be required.
9. Route the O2 sensor extension through the frame and under the seat and plug it into the stock wiring connector.
10. Install the new nylon cable ties (supplied) to hold the wire and extension onto frame.
11. Slide two nut plates (supplied) into the brackets that are welded to the back side of the mufflers (Figure 7). Install two 5/16" x 5/8" flange head bolts (supplied) through the 528-P bracket and into the nut plates inside each muffler body bracket.
12. Tighten the exhaust port flange nuts and 5/16" flange head bracket bolts.
13. Tighten all hose clamps securing heat shields.
14. Re-install and tighten the rear brake pedal assembly mounting bolts to factory specifications.
15. Check for adequate clearance between all exhaust system components and motorcycle accessories prone to heat damage.
16. Remove any tape you installed previously to frame or pipes.
17. Be sure to tighten all hardware before starting your motorcycle.
18. After installation and before starting motorcycle, completely clean pipes and mufflers with warm soapy water and a clean soft cloth. Dry with a clean towel. NOTE: Any residue, oil, or fingerprints will stain the chrome or black coating when the metal heats up. Do NOT use anything abrasive to clean the pipes as it may damage or remove the finish.

EXHAUST CARE - HELPFUL HINTS TO AVOID DISCOLORATION OF EXHAUST SYSTEM

1. When installing a new set of chrome pipes, make sure your hands are clean and free of oil. After installation, thoroughly clean pipes with a soft cloth and soapy water that will leave no residue before starting the motorcycle.
2. Avoid long periods of idling as this can cause discoloration.
3. Intake leaks can cause the engine to run lean and overheat, this could lead to discoloration.
4. Make sure there are no exhaust leaks at the junction of the exhaust pipes and cylinder head. We recommend replacing gaskets if they are worn.

VANCE & HINES OPTIONAL ACCESSORIES

FUELPAK



FUEL MANAGEMENT:

Take the guess work out of fuel injection with Fuelpak Fuel Management. Contact your local dealer or call (562) 921-0071 to order. Visit fuelpakfi.com for more information. Fuelpak is intended for racing or off-highway use only, and is not legal for sale or use in California on pollution-controlled vehicles.

PLEASE NOTE: Every effort is made for Vance & Hines Exhaust Systems to provide improved cornering clearance. However, due to design and space limitations on some motorcycle models, ground and cornering clearance may not be improved and in some cases may be reduced. Be sure to follow proper installation instructions.

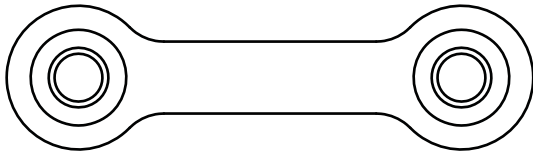
PACKING LIST

MORE POWER : LESS NOISE

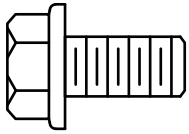
ALL PARTS SHOWN ARE ACTUAL SIZE



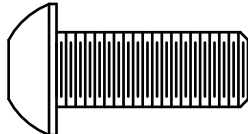
Nylon cable tie x2



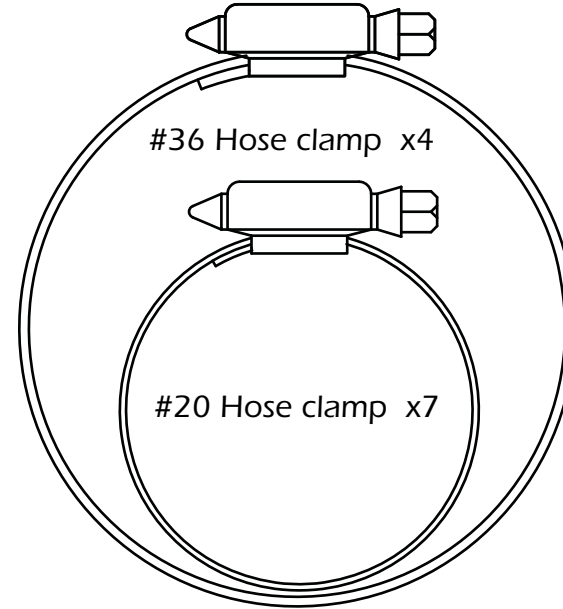
Nut plate x2



5/16 x 5/8 Flange bolt x4

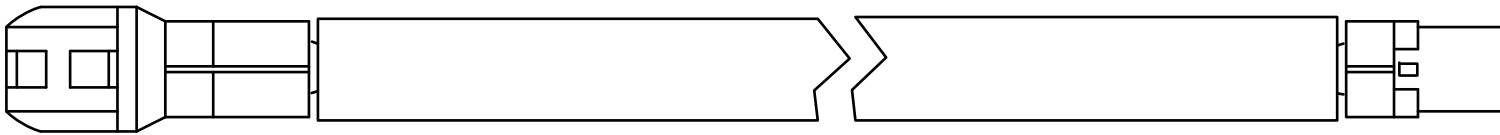


10mm-1.25 x 25mm x2



#36 Hose clamp x4

#20 Hose clamp x7



17" O2 Sensor Extension x1

PARTS NOT SHOWN:

Y335FC	Header	x1
Y335HC	Front heat shield	x1
Y336HC	Rear heat shield	x1
Y337HC	Front muffler heat shield	x1
Y338HC	Rear muffler heat shield	x1
528-P	Bracket	x1

WARRANTY

Vance & Hines exhaust systems are warranted against defects in material and workmanship for a period of 90 days from the date of purchase from an authorized dealer. This warranty does not cover discoloration of chrome finishes. This warranty is limited to the repair or replacement of a product proven to be defective from normal use. Vance & Hines exhaust systems are designed to fit and operate on OEM motor and chassis. This warranty does not cover any product subject to abuse, misuse, improper installation or modification.

FUEL MANAGEMENT

GET THE MOST OUT OF YOUR RIDING EXPERIENCE...

AN AFTERMARKET EXHAUST SYSTEM IS ONLY YOUR FIRST STEP, NOW YOU NEED FUEL MANAGEMENT.

NOW YOU NEED FUELPAK.

Your fuel injected Harley-Davidson® is equipped with an ECU (electronic control unit) that's programmed to deliver fuel to the motor based on an air/fuel ratio for a stock air filter and stock exhaust system. When you install a performance exhaust system, your airflow changes, so you need a fuel management system that adjusts your air/fuel ratio to match the changes. That fuel management system is Fuelpak. Fuelpak adds and takes away fuel, allowing for a more precise range of refinement in your air/fuel ratio. Get the perfect fuel management combination with your Vance & Hines exhaust system, get Fuelpak. For more information visit the tuning center at fuelpakfi.com

NOTICE: Fuelpak is intended for racing or off-highway use only, and is not legal for sale or use in California on pollution-controlled vehicles.



MORE POWER : LESS NOISE

13861 ROSECRANS AVENUE / SANTA FE SPRINGS, CA 90670
SALES: (562) 921-7461 / TECHNICAL: (562) 926-5291 / FAX: (562) 802-0110
VANCEANDHINES.COM