



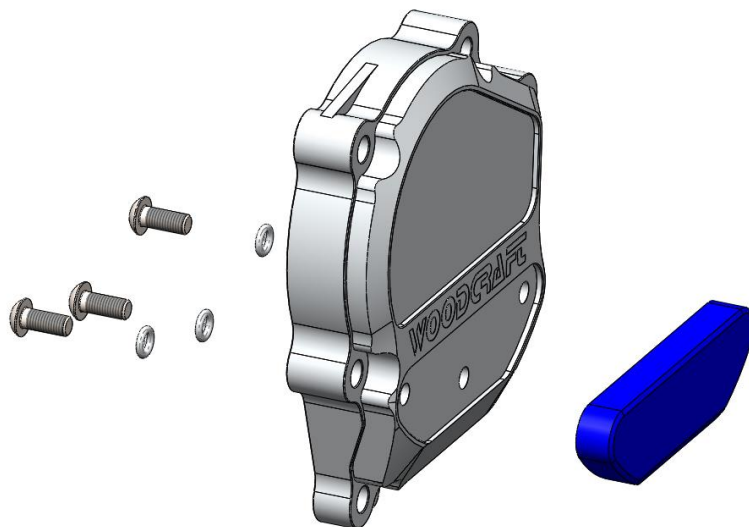
Installation Instructions

60-0145R Cover

1) Remove the OEM cover from the motor.

2) Attach the skid plate to the Woodcraft cover by bolting it from the inside. Each bolt should have an o-ring (supplied) on it before assembly. You can use a very small amount of grease on the o-ring to ease installation.

If your skid plate came with washers, simply put the washers under the head of the bolt before installing the o-ring



IMPORTANT - USE BLUE

THREADLOCKING COMPOUND on the three skid plate mounting bolts. Completely coat the threads & allow time to cure before running!

3) Completely clean the engine gasket surface. Install the Woodcraft cover with a new gasket using the a combination of the OEM mounting hardware and the supplied Woodcraft bolts. **Use the 2 shorter bolts provided to replace the 2 bottom OEM bolts (below the skid plate), and reuse the rest of the OEM mounting hardware.** Torque for the all mounting bolts is about 8 ft-lbs.

4) Start the motorcycle and inspect for any leaks before riding.

WARNING

Installation of Woodcraft Billet Covers involve removal and reinstallation of certain factory components such as fasteners, alternator stators and oil-retention gaskets. **FAILURE TO INSTALL THESE COMPONENTS IN COMPLIANCE WITH ALL SPECIFIC INSTRUCTIONS SUPPLIED WITH BILLET COVER KIT, MAY CAUSE OIL LOSS OR DAMAGE TO ENGINE RESULTING IN LOSS OF CONTROL OF MOTORCYCLE AND SERIOUS INJURY OR DEATH.**