

WOODGRAFT CFMOTORSPORTS
 105 Baldwinville Rd. Winchendon, MA 01475
 (978)297-2977

Honda CBR500 (05-0315/316 Kit) Rearset Instruction Sheet – Racing Use Only

Thank you for selecting CFMOTORSPORTS rearsets. The components you have just purchased for your motorcycle are designed to improve the ground clearance, crash worthiness and overall good looks of your motorcycle. Please note that these components are intended and approved for **racing use only**. As such, the footpegs are solid-mount and brake light switches and pedal return springs are not provided. If desired, this kit uses an 03-0100 brake light switch and 07-7125 brake return spring.

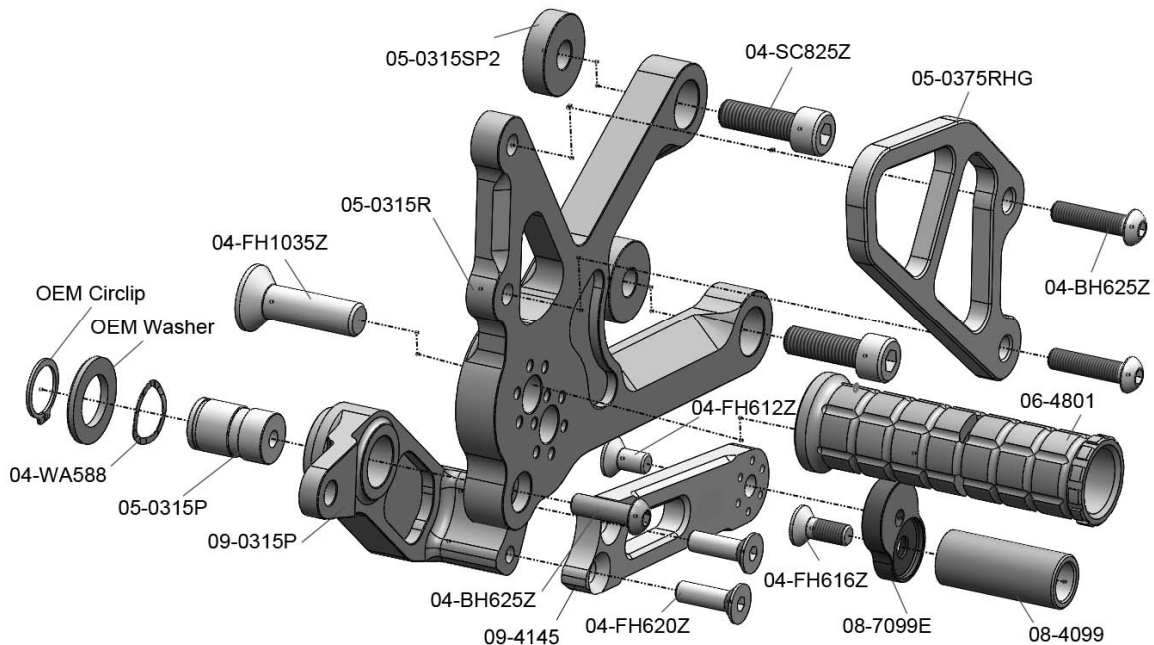
- 1) Remove stock rearsets, footpegs and associated hardware. All components that are re-used in this kit should be cleaned and inspected for damage before re-installation.

IMPORTANT

Tighten all fasteners to factory specification or industry standard. FAILURE TO PROPERLY TIGHTEN ALL FASTENERS MAY CAUSE DAMAGE TO THE MOTORCYCLE, LOSS OF CONTROL AND SERIOUS INJURY OR DEATH

Brake Side Assembly Installation

- 1) Rotate the eccentric to the desired foot position. Bolt the CFM footpeg to the bracket using the included **10x35mm FH** hardware. **IMPORTANT** - Secure bolt with threadlocking compound once the position is final.
- 2) Assemble the CFM brake pedal (all components but the tip, which will be completed in step 5). **IMPORTANT** - use threadlocking compound on **all** bolts.
- 3) Install the brake pin to the back side of the bracket using the supplied hardware. Be sure to generously apply quality waterproof grease to the sliding surface of the bolt. **IMPORTANT** - Secure bolt with threadlocking compound.
- 4) Install the CFM brake pedal to the back side of the bracket using the OEM circlip and washer from the stock rearsets, plus the supplied wave washer in the position shown in the diagram below.
- 5) Bolt the master cylinder and heel guard (optional CFM or OEM) in place using the OEM or included **6x25mm BH** hardware. Attach the master cylinder clevice to the brake pedal and adjust the lever height as desired. Adjustments can be made using the eccentric adapter and the stock adjuster. **IMPORTANT** - use threadlocking compound on **all** bolts when position is final.
- 6) Bolt the brake bracket assembly to the frame using the **8x25mm** socket cap bolts supplied, placing the included spacers between the bracket and the frame.



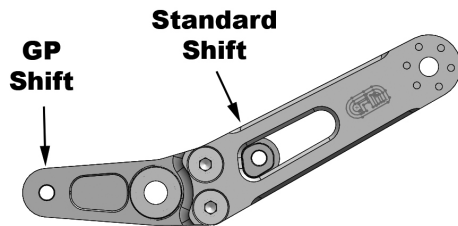
Shifter Side Assembly Installation

- 1) Bolt the CFM footpeg to the bracket using the included **10x35mm** FH hardware. Rotate the eccentric to the same position you chose on the brake side. **IMPORTANT** - Secure the bolt with threadlocking compound.
- 2) Attach the heel guard to the bracket using the included **6x16mm** BH hardware. **IMPORTANT** - Secure bolts with threadlocking compound.
- 3) Bolt the shift bracket assembly to the frame using the **8x25mm** socket cap bolts supplied, placing the included spacers between the bracket and the frame.

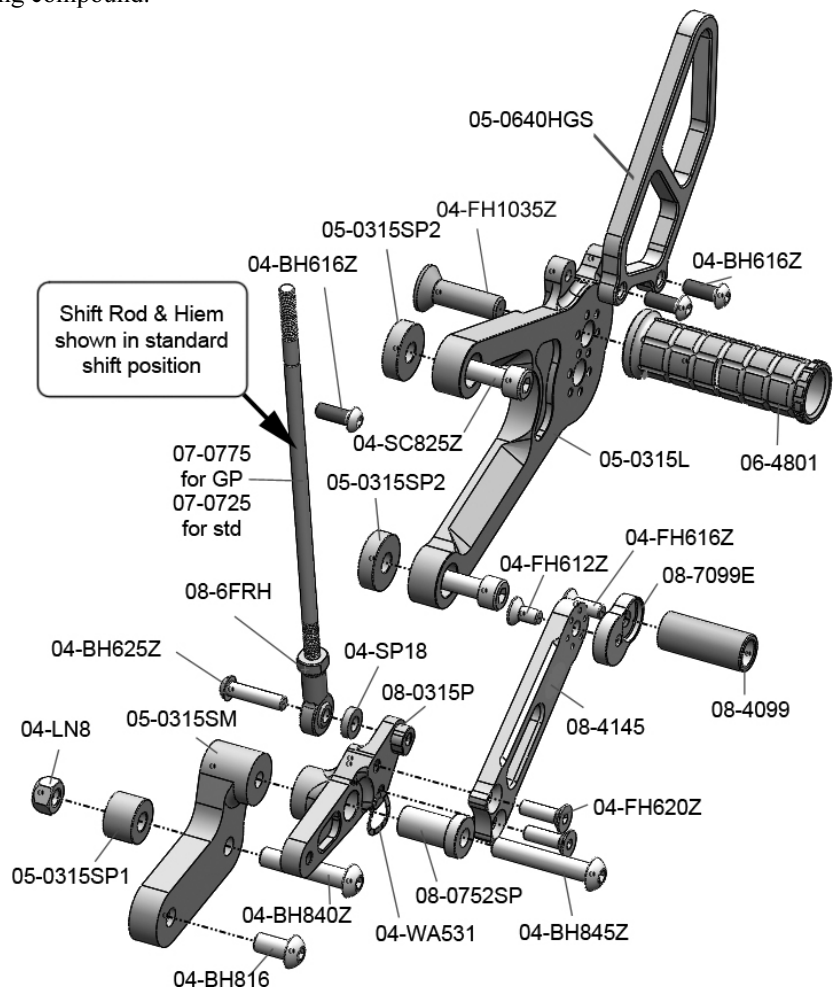


Shift Assembly

1. Attach the CFM shifter mount bracket to the frame using the supplied bolts. The left side of the mount slides over the boss on the frame. The right side bolt requires drilling a 5/16" hole in the frame tab. The hole should be in the center of the arm (marked by the "X" in the photo). Once the hole is drilled, secure the base using the 8x40mm bolt, placing the spacer between the mount and the frame and securing the bolt with a 8mm locknut on the back side of the frame where you drilled the hole.
2. Assemble the CFM shift pedal using a threadlocking compound on all bolts except the tip (to be completed in step 6). Bolt the hiem joint to the pedal, placing the spacer between the hiem joint and the pedal (note location for shift pattern below). **IMPORTANT** - Secure all bolts with threadlocking compound.



3. Secure the CFM lever to the bracket using the supplied **8x40mm** BH bolt, spacer sleeve and wave washer. Be sure to generously apply quality waterproof grease to the sliding surface of the spacer to ensure smooth lever operation. **IMPORTANT** - Secure the bolt with threadlocking compound.
4. Install the CFM shift rod (use the locknuts from the **OEM rod**). Bring the pedal to the desired height and lock in place. **IMPORTANT** - the shift rod should make roughly a 90 degree angle with both the upper shift arm and shift pedal.
5. Adjust the lever tip and shift rod to the position where the distance from the peg to the lever tip is most comfortable and then secure the tip with threadlocking compound. Be sure to lock the shift rod in place using both lock nuts.



BE SURE THAT ALL COMPONENTS OPERATE AND RETURN FREELY BEFORE USE

If you have any questions regarding installation, please feel free to contact us

IMPORTANT Installation and use of this product will change the response of the motorcycle to rider control inputs. Failure of the rider to adapt to these changes may result in a loss of control, and serious injury or death. Improper installation and/or failure to comply with all warnings and instructions may cause a loss of control and serious injury or death. **DO NOT INSTALL OR USE THIS PRODUCT IF YOU ARE UNABLE TO DO SO IN COMPLIANCE WITH ALL INSTRUCTIONS AND WARNINGS. SEEK THE ASSISTANCE OF A PROFESSIONAL TECHNICIAN.**