



50-0403 Yamaha R3 Frame Slider Installation Instructions

1) The installation instructions for both sides of this motorcycle are the same. Before you begin, remove your OEM side body panels. One slider should be completely installed before moving on to the other side. This helps keep the motor from moving installation.

2) Remove the OEM motor mount bolt from one side. Attach the 50-0240L slider base to the motorcycle using the 04-SC1080F bolt. The OEM washer used with the stock motor mount bolt must be reused and placed between the bottom of the base and the frame.

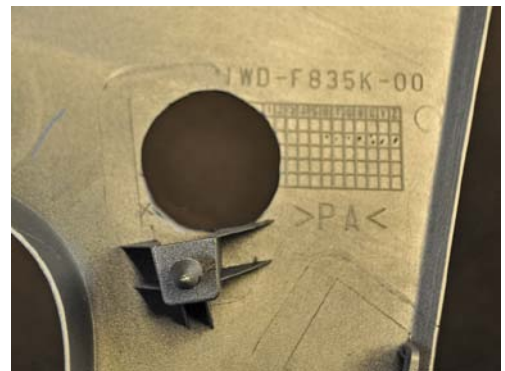
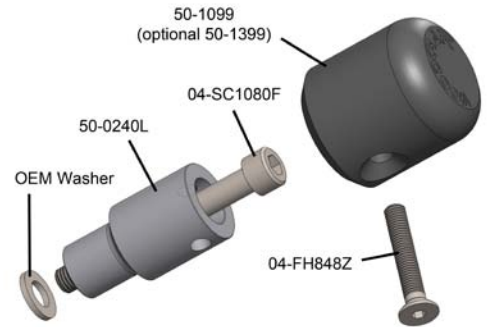
NOTE: We suggest using an anti-seize compound on the bolt threads. Torque to OEM recommended specifications (most 10mm bolts use between 30 and 40 ft-lbs). Be sure to seat the base all the way against the frame. The last turn or two of the bolt may meet slight resistance – this is normal.

3) You will first have to drill at least a 2 inch hole for the frame slider pucks. You can start by tracing the circle of the frame slider base against the inside of the bodywork to find the center. Mark the hole and drill a small pilot hole (smaller than the center drill of a 2 inch hole saw if that is your tool of choice).

4) Once you have found the center either cut the hole with a 2 inch hole saw, or , you can cut an undersized hole and slowly enlarge it with a drum sanding bit on a dremel tool (for those concerned with making a mistake with the larger hole saw). The photo at the right shows the location of our hole on OEM bodywork.

5) Slide the plastic slider over the top of the base and secure it in place using the 8mm countersunk bolt provided. The bolt first passes through the non threaded hole and then screws into the threaded hole on the far side of the base. The plastic is undersized on the far side of the slider to act as a locknut for the bolt.

6) Repeat steps 2-5 for the opposite side.



Woodcraft Technologies, Inc
978-297-2977
www.woodcraft-cfm.com

WARNING: Improper installation and/or failure to comply with all warnings and instructions may cause a loss of control and serious injury or death. The motorcycle should be run and thoroughly inspected before use. **DO NOT INSTALL OR USE THIS PRODUCT IF YOU ARE UNABLE TO DO SO IN COMPLIANCE WITH ALL INSTRUCTIONS AND WARNINGS. SEEK THE ASSISTANCE OF A TRAINED PROFESSIONAL TECHNICIAN.**