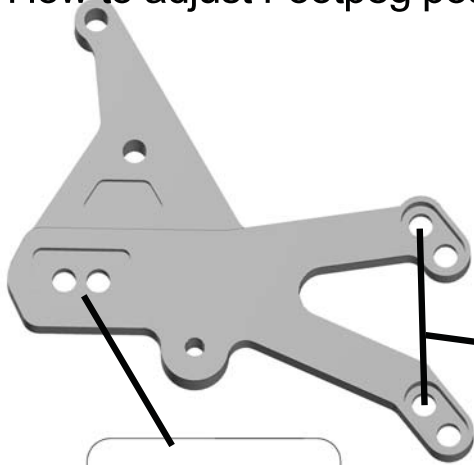


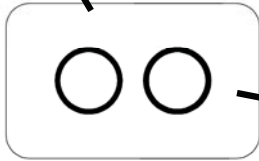
RS628K INSTRUCTIONS

TO BE INSTALLED BY A CERTIFIED MECHANIC ONLY | FOR RACE USE ONLY

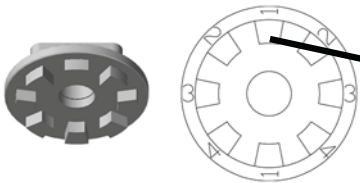
How to adjust Footpeg positions



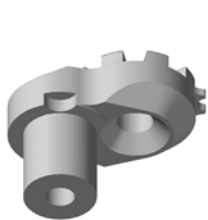
1) Decide which mounting hole on bracket to use.
The top holes are a lower footpeg position - closer to stock footpeg height.



2) Decide which mounting hole in pocket to use.

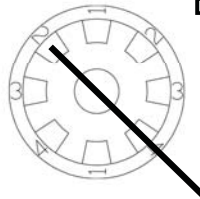


3) Position #1 at 12 o'clock position for shift and brake.
Be sure other numbers are not upside down.

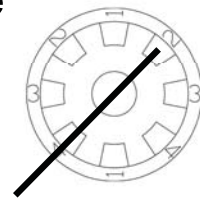


4) Tab reader will indicate which position you are on.
CAUTION - Each number has two positions. Be sure to use the same position for shift and brake side.

Example

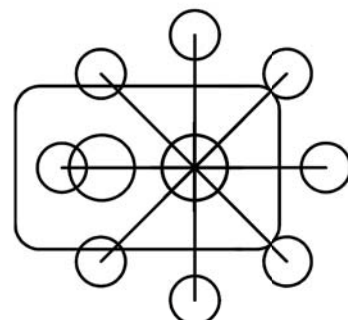
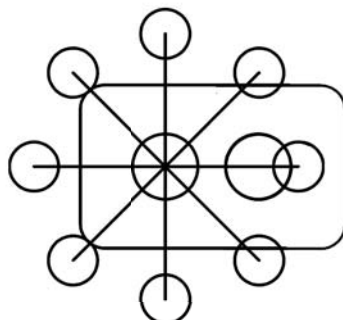


#2 position



#2 position

Footpeg positions



1.800.440.3559

www.VORTEXRACING.com