



401 South Grand Ave., Santa Ana, CA 92705
Tel: 714.550.6070 Fax: 714.550.9661 www.twobros.com

Yamaha
R6
Part# 005-3850405-S1



Parts List

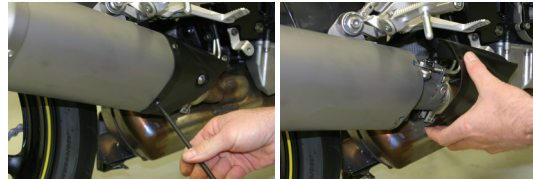
Qty.	Description	Part Number
1	Yamaha R6 Muffler Canister S1R	8" S1R Vertical
1	Yamaha R6 Muffler Clamp S1R	S1R Vertical
1	Yamaha R6 Slip-On Tube	005-38504S
1	Muffler Clamp	Varies
1	Yamaha R6 Billet Muffler Mounting Bracket	005-212B
1	8x16mm Flange Bolt	005-FB816
1	Barrel Clamp	005-27-61MSH
2	Flange Nut 8mm	005-FN8
1	Spring Puller	005-SP
1	Permatex Anti-Seize	031-P09175

IMPORTANT - PLEASE READ CAREFULLY

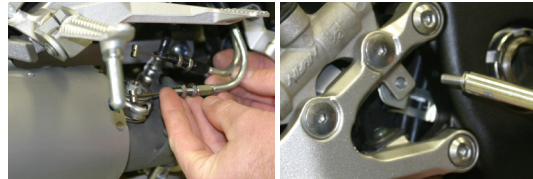
We recommend that this performance part be installed by a qualified motorcycle technician. If you have any doubts as to your ability to install this performance part, please consult with your local motorcycle dealer. Read all instructions first before starting installation. Make sure the motorcycle and exhaust system are completely cool before starting the installation. Also, make sure the bike is secure on a centerstand or ideally a service lift during installation. Be sure to save all stock components for possible use later.

Installation Instructions

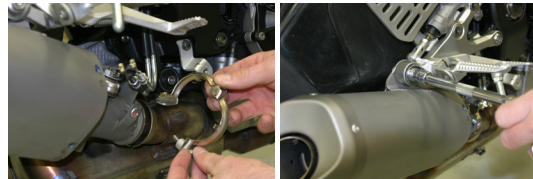
1. Make sure the bike is completely cool before starting the installation. Make sure the bike is secure on a rear stand or ideally a service lift.
2. Remove lower right fairing from the motorcycle.
3. Remove muffler inlet cover from front of muffler to expose exhaust valve cables (noise reduction valve).



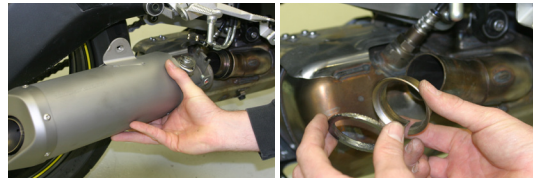
4. Remove cables from muffler and cable clamp from right side rear set assembly.



5. Remove muffler joint clamp and muffler mounting bolt.



6. Remove muffler assembly. Also be sure to remove the OEM retaining ring and gasket from the stock slip tube.



7. Remove bracket holding the brake reservoir to the frame.



8. Remove the noise reduction valve servo bracket from the frame.



9. Remove servo by pulling out from the right side of the motorcycle and disconnect the cables. Disregard cables.



10. Remount the servo without the cables. This step is necessary in order to keep an error code from being displayed on the LCD screen. Make sure servo is plugged into wiring harness.



11. Reinstall the brake reservoir.



12. Attach S1R muffler to slip tube using supplied hook springs.





401 South Grand Ave., Santa Ana, CA 92705
 Tel: 714.550.6070 Fax: 714.550.9661 www.twobros.com

Yamaha
R6
 Part# 005-3850405-S1



Qty.	Description	Part Number
1	Yamaha R6 Muffler Canister S1R	8" S1R Vertical
1	Yamaha R6 Muffler Clamp S1R	S1R Vertical
1	Yamaha R6 Slip-On Tube	005-38504S
1	Muffler Clamp	Varies
1	Yamaha R6 Billet Muffler Mounting Bracket	005-212B
1	8x16mm Flange Bolt	005-FB816
1	Barrel Clamp	005-27-61MSH
2	Flange Nut 8mm	005-FN8
1	Spring Puller	005-SP
1	Permatex Anti-Seize	031-P09175

Installation Instructions

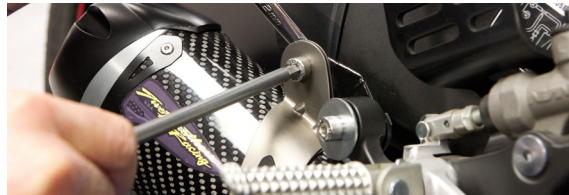
- Slide the barrel clamp over the TBR slip-tube and install on motorcycle.



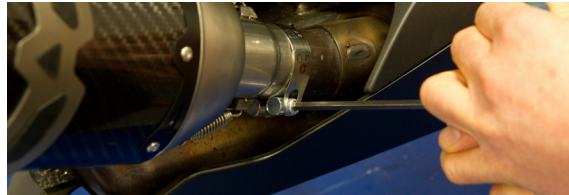
- Attach supplied muffler bracket using OEM muffler mount bolt. Use supplied nut.



- Attach muffler to muffler bracket and then securely tighten muffler using supplied bolt and nut.



- Tighten barrel clamp.



- Double check your work and make sure all hardware is securely tightened.



- Before you run the bike, clean off all fingerprints and dirt, as any oily residue will etch the metal and become somewhat permanent when the system gets hot. Run the bike and enjoy. It is normal for some white smoke to appear the first time you start the bike. This is packing/manufacturing oil from inside the pipe burning off. Check for gaps or leaks. If you find a leak, a little high temperature silicon sealant should fix it. After 50 to 100 miles, recheck all fasteners for tightness.

Care & Cleaning / Warranty

Care & Cleaning

Keep system free of dirt and moisture. Store in a cool, dry place. For cleaning use a mild spray cleaner. Always apply cleaner or polish with a soft, clean cloth.

Stainless Header System: Polished stainless steel pipes will turn a light golden hue after a few heat cycles, this is a normal characteristic of high quality stainless steel.

Carbon Fiber Mufflers: Always make sure the fiberglass packing inside is in good condition and not burned out, as exhaust heat inside an empty canister will deteriorate the Carbon Fiber sleeve. TBR sells repack kits (TBR part # 005-10038) that include new rivets and repack material as well as a drill bit (#30), making it easy to do yourself. Also, NEVER dyno test your bike with carbon fiber mufflers installed - the intense heat and lack of cooling air can quickly cause the CF material to burn. Two Brothers Racing does not provide a warranty for burned carbon fiber.

Aluminum Mufflers: Use an aluminum or mag wheel polish such as Mother's to restore the bright finish to factory spec.

Warranty Information

Two Brothers Racing products are intended for closed course competition purposes only, and therefore are sold "as is" without warranty. Two Brothers Racing specifically disclaims any warranties of merchantability or fitness for a particular purpose and disclaims all responsibility for consequential and incidental damages or any other losses arising from the use of these products or parts.