

RS275K INSTRUCTIONS

TO BE INSTALLED BY A CERTIFIED MECHANIC ONLY | FOR RACE USE ONLY

SHIFT SIDE EXPLODED VIEW, SHEET 1 OF 3



INDEX



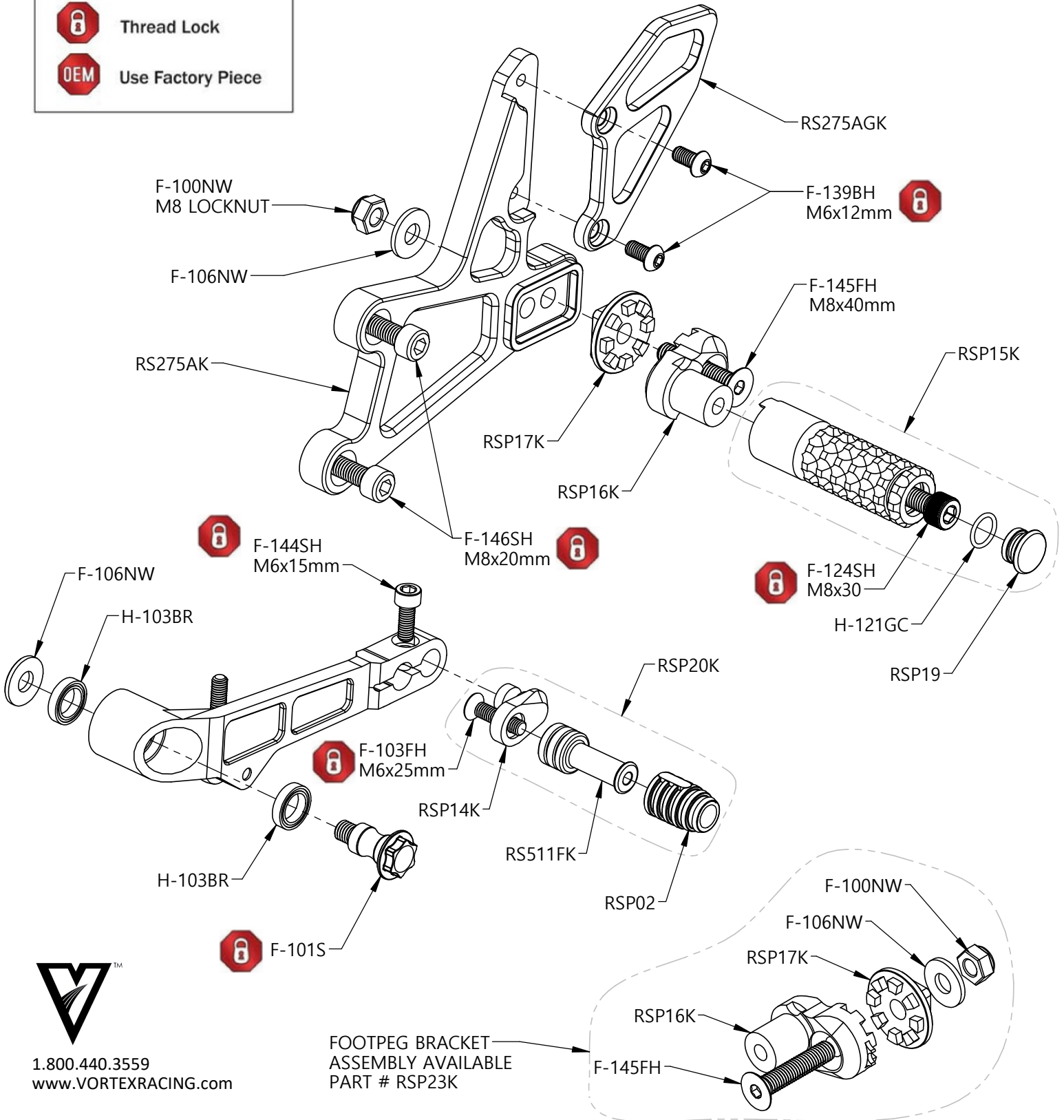
Lubricate



Thread Lock



Use Factory Piece



1.800.440.3559
www.VORTEXRACING.com

RS275K INSTRUCTIONS

TO BE INSTALLED BY A CERTIFIED MECHANIC ONLY | FOR RACE USE ONLY

SHIFT SIDE EXPLODED VIEW, SHEET 2 OF 3



INDEX



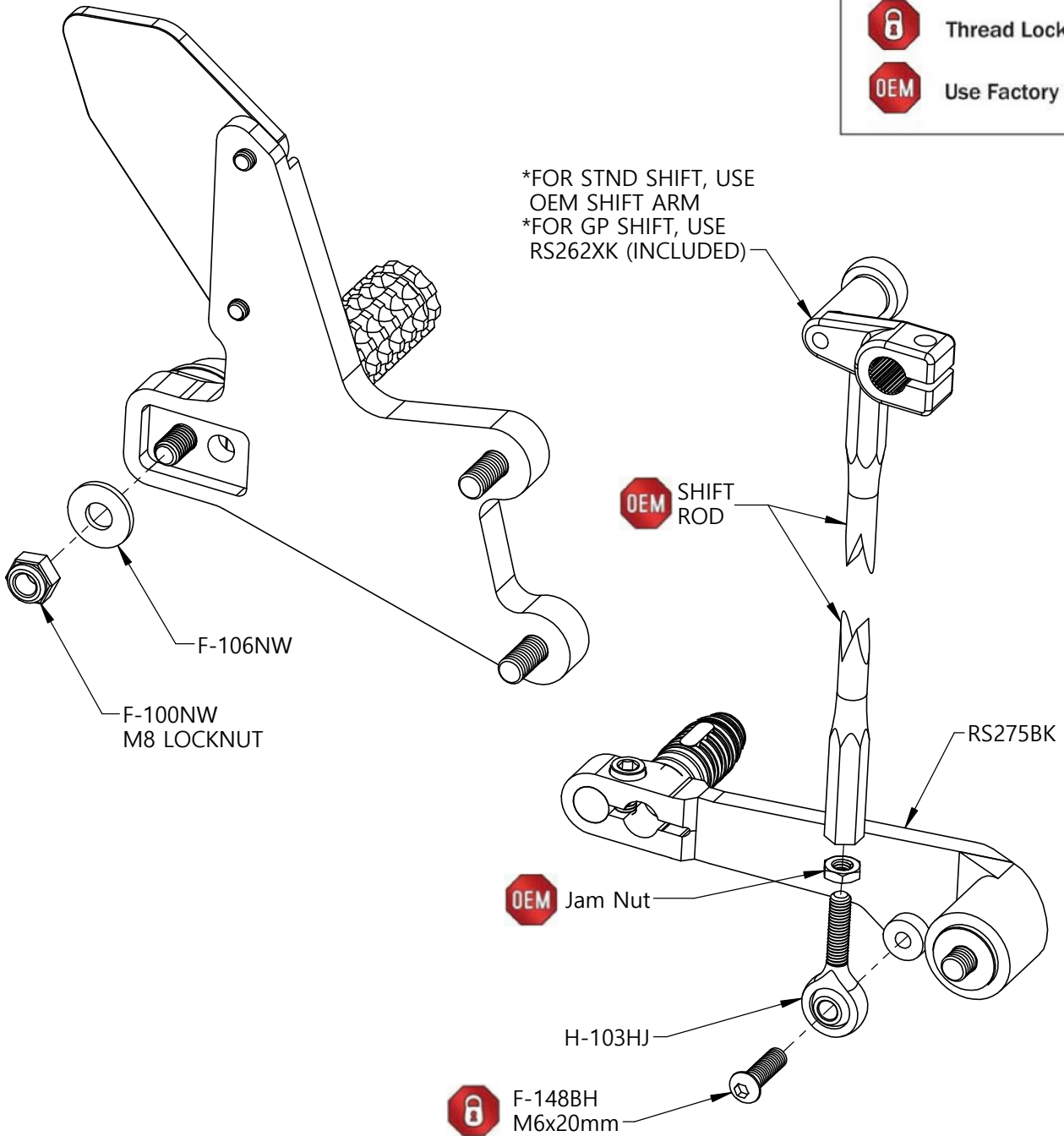
Lubricate



Thread Lock



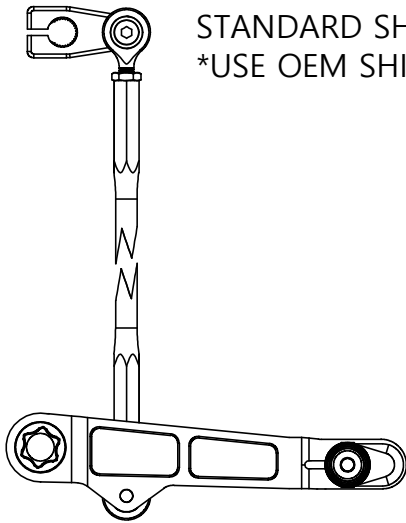
Use Factory Piece



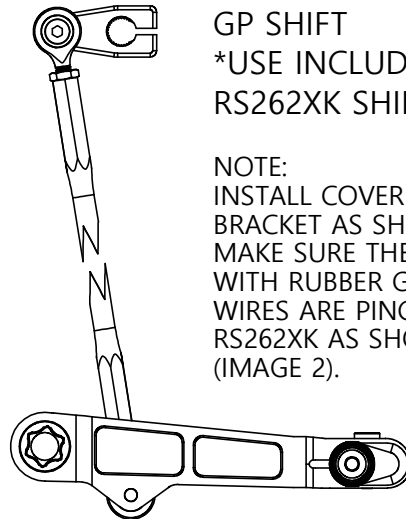
RS275K INSTRUCTIONS

TO BE INSTALLED BY A CERTIFIED MECHANIC ONLY | FOR RACE USE ONLY

SHIFT SIDE EXPLODED VIEW, SHEET 3 OF 3



STANDARD SHIFT
*USE OEM SHIFT ARM



GP SHIFT
*USE INCLUDED
RS262XK SHIFT ARM

NOTE:
INSTALL COVER ON OTHER SIDE OF
BRACKET AS SHOWN IN (IMAGE 1).
MAKE SURE THE COVER IS ALIGNED
WITH RUBBER GROMMET AND NO
WIRES ARE PINCHED. THEN, FLIP
RS262XK AS SHOWN HERE AND IN
(IMAGE 2).

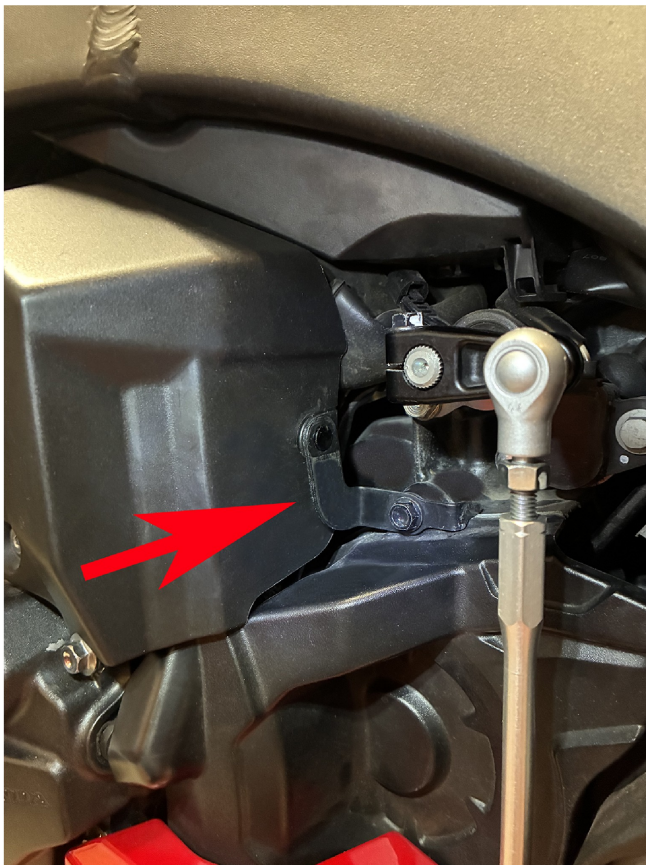


IMAGE 1



IMAGE 2

