

**FOR OFF ROAD/RACE USE ONLY!**



*Driven TT Rearsets for 2015 Yamaha R-3*

*Part#:DRP-722*

**INSTALLATION INSTRUCTIONS**

**Removal**

**Shifter Side**

1. Remove shift rod (do not remove shift knuckle).
2. Remove frame plate including stock shift lever from bike.

**Brake Side**

1. Remove frame bracket from bike
2. Remove 2 M8 bolts holding heal guard
3. Remove master cylinder plunger pin from brake pedal
4. Remove rear brake switch and disconnect it from bike.

**TOOLS REQUIRED**

- 8mm Open End Wrench
- 5mm Hex Key
- 6mm Hex Key
- 8mm Hex Key
- Neele Nose Pliers
- Screw Driver
- Blue Loctite
- Impact Gun

**THE USE OF BLUE LOCTITE IS REQUIRED ON ALL MOUNTING HARDWARE!**

**Installation**

**NOTE: ALL PIVOT POINTS MUST BE TIGHTENED USING BLUE LOCTITE AND AN IMPACT GUN.**

**Shifter Side**

1. Install foot peg in frame bracket.
2. Install frame bracket onto bike.
3. Connect shift rod into shift pedal
4. Install frame bracket onto bike.
5. Adjust lever to desired position
- 6 For reverse shift simple rotate shift knuckle 180 degrees.

**Brake Side**

1. Install foot peg in frame bracket
2. Connect master cylinder plunger to brake lever using oem pin.
3. Install master cylinder using 2 M6 bolts supplied
  - 3a. Make sure brake pedal has "free play". Very Important.
4. Install frame bracket to bike.
5. Use blue Loctite on all bolts and torque all to required specs.
6. Make sure nothing interferes with proper operation of motorcycles.

**\*To activate rear brake light, a brake pressure switch(not included) needs to be installed**

**TORQUE VALUES**

- M5 = 6FT/LBS
- M6 = 10FT/LBS
- M8 = 25FT/LBS
- M10= 45FT/LBS

**Make final adjustment as necessary and re-check all hardware after the first 500 miles of use.**

**THIS PRODUCT IS INTENDED TO BE INSTALLED BY A CERTIFIED TECHNICIAN\***

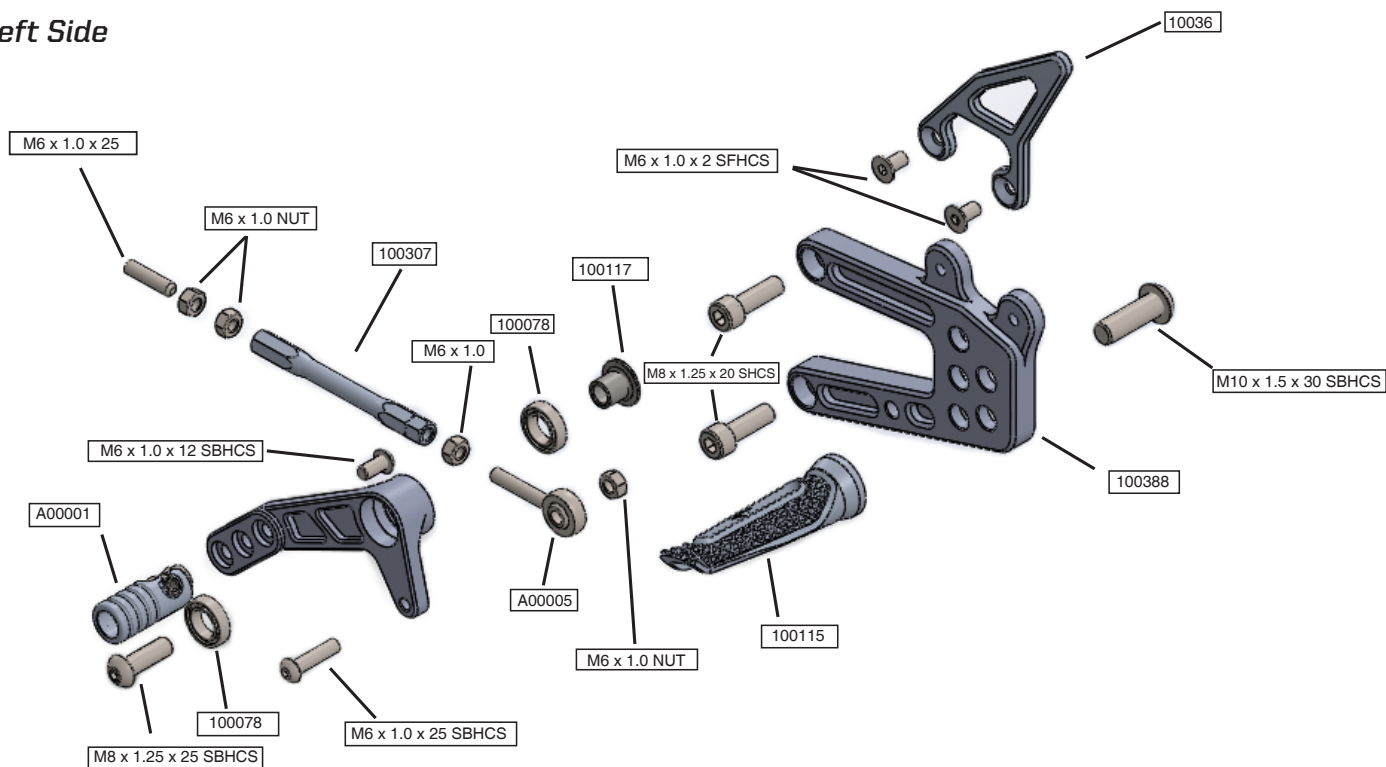
**FOR OFF ROAD/RACE USE ONLY!**



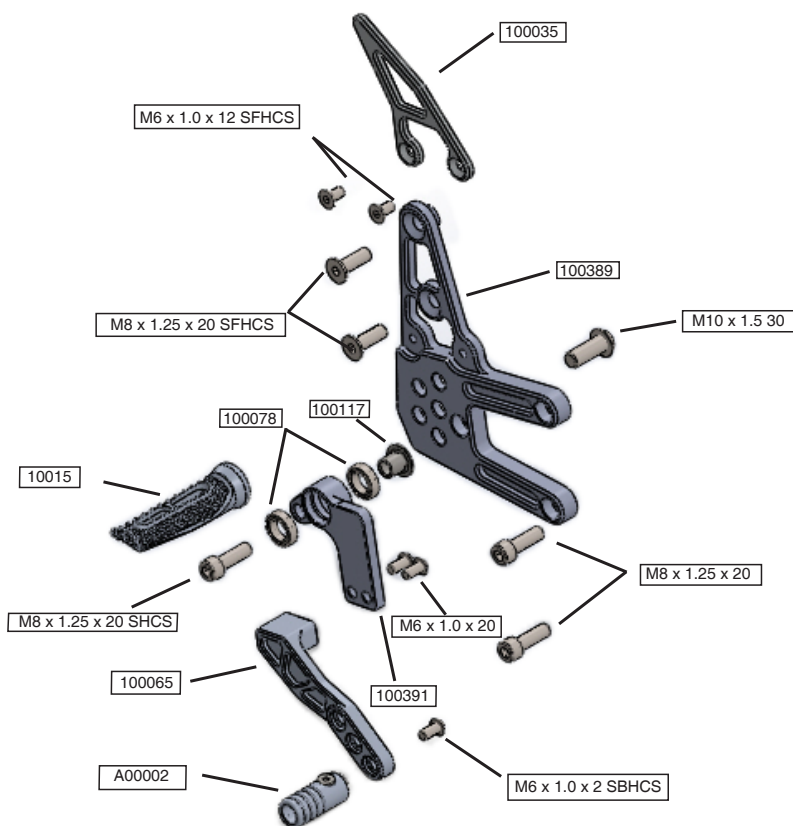
Driven TT Rearsets for 2015 Yamaha R-3

Part#:DRP-722

**Left Side**

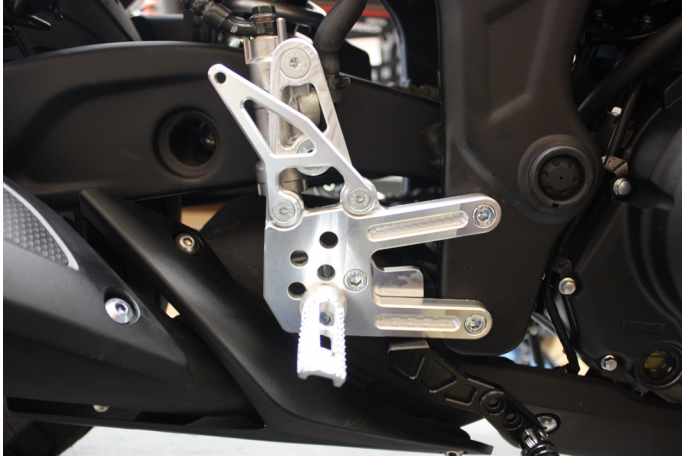


**Right Side**



**THIS PRODUCT IS INTENDED TO BE INSTALLED BY A CERTIFIED TECHNICIAN\***

**FOR OFF ROAD/RACE USE ONLY!**



(Fig 1.) Brake



(Fig 2.) Standard Shift



(Fig 3.) Reverse Shift

**\*These images are prototypes only. The actual product may look different.**