

FOR OFF ROAD/RACE USE ONLY!



Driven Racing Remote Lever Adjuster

Part#:DRLA-01

INSTALLATION INSTRUCTIONS

***This product is designed to fit only on a Brembo RCS19 Master Cylinder with either the original lever or a Driven replacement lever!**

Note # 1: This product is designed for race bike only. With limited handlebar travel, it will not fit on street bikes with full lock to lock range.

Note # 2: The remote lever adjuster will come with a 22" long flexible drive shaft which is too long for most applications. Please measure twice and cut once. Cutting should be performed with a high speed rotary blade to make sure not to deform the shaft (make sure to wear eye protection).

After the cutting has been made attach the lever adjuster knob to the round lever adjuster and use the M4 Allen set screw to tighten the adapter into the lever knob (make sure to use Loctite).

Position the adjusting knob and knob holder on the opposite side bar and tighten the 2 M5 bolts (use Loctite).

Trim plastic sleeve and use the 3/8" coupling to cover both the knob and adapter. Install flexible shaft into both ends and tighten M4 set screws using Loctite.

Move bars side to side (lock to lock) and make sure nothing interfere with the movement of the bars.

FOR OFF ROAD/RACE USE ONLY!



Driven Racing Remote Lever Adjuster

Part#:DRLA-01

INSTALLATION INSTRUCTIONS

***This product is designed to fit only on a Brembo RCS19 Master Cylinder with either the original lever or a Driven replacement lever!**

Note # 1: This product is designed for race bike only. With limited handlebar travel, it will not fit on street bikes with full lock to lock range.

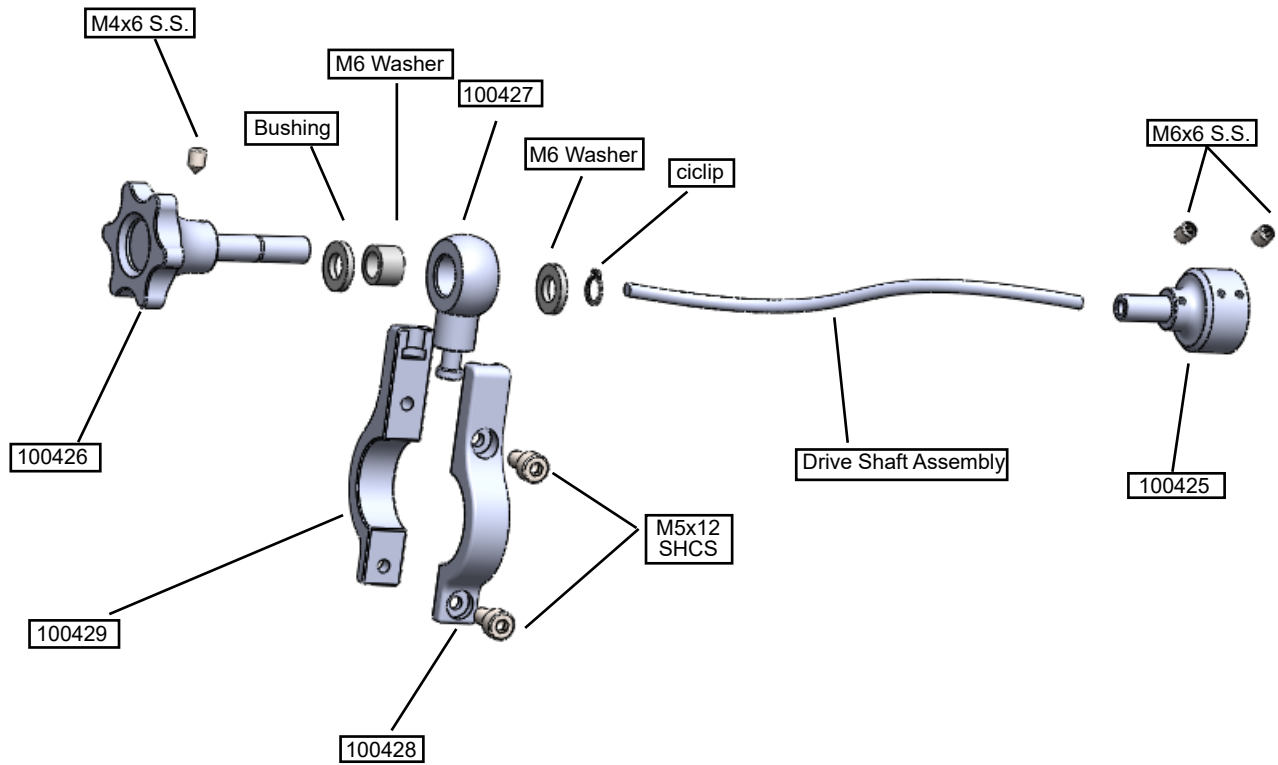
Note # 2: The remote lever adjuster will come with a 22" long flexible drive shaft which is too long for most applications. Please measure twice and cut once. Cutting should be performed with a high speed rotary blade to make sure not to deform the shaft (make sure to wear eye protection).

After the cutting has been made attach the lever adjuster knob to the round lever adjuster and use the M4 Allen set screw to tighten the adapter into the lever knob (make sure to use Loctite).

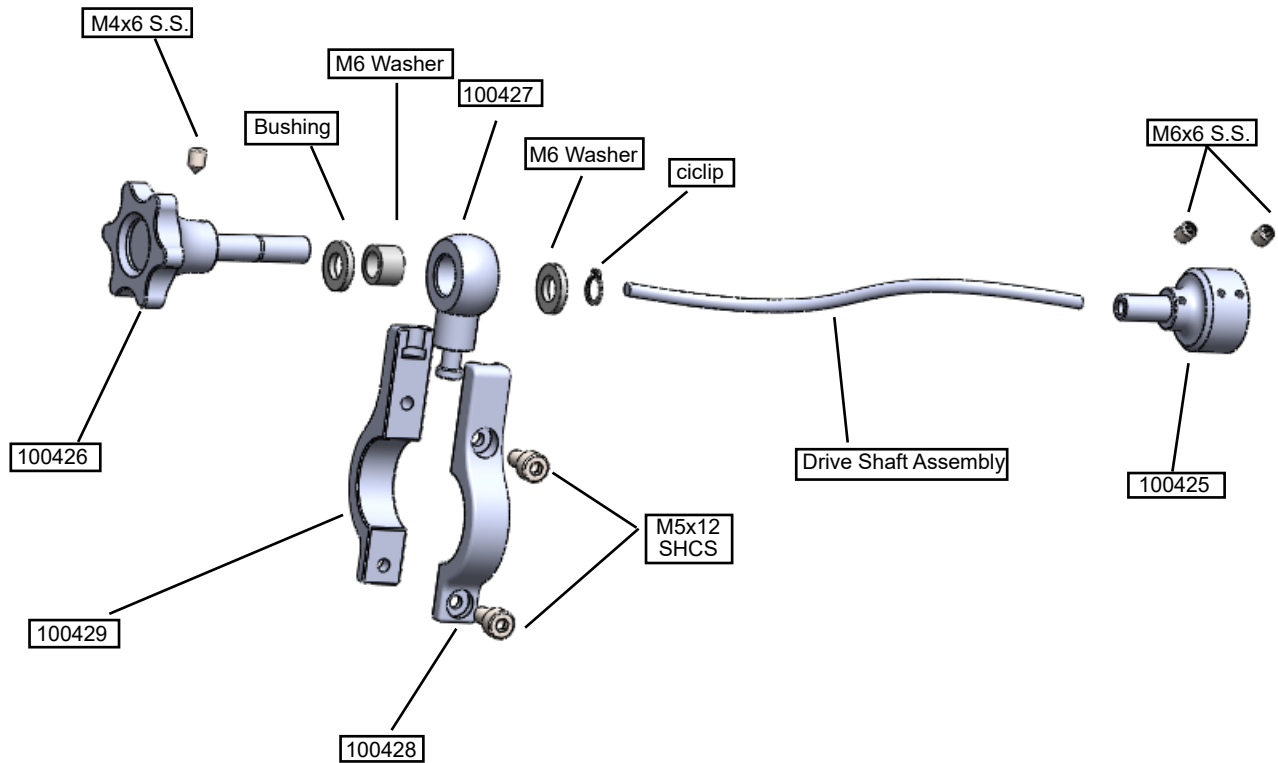
Position the adjusting knob and knob holder on the opposite side bar and tighten the 2 M5 bolts (use Loctite).

Trim plastic sleeve and use the 3/8" coupling to cover both the knob and adapter. Install flexible shaft into both ends and tighten M4 set screws using Loctite.

Move bars side to side (lock to lock) and make sure nothing interfere with the movement of the bars.



THIS PRODUCT IS INTENDED TO BE INSTALLED BY A CERTIFIED TECHNICIAN*



THIS PRODUCT IS INTENDED TO BE INSTALLED BY A CERTIFIED TECHNICIAN*