

Thank you for purchasing this Cobra jet kit. This kit has been developed for a motorcycle which is set to the parameters listed at the right in the "Stage" description. If your motorcycle does not meet any of these parameters please check with Cobra before installation. For technical assistance contact Dynojet (800)-992-4993

Cobra Engineering  
 23801 E. La Palma Ave.  
 Yorba Linda, CA 92887  
 TEL: 714-692-8180  
 FAX: 714-692-5016

Website Address  
<http://www.cobrausa.com>

The manufacturer and seller make no warranties express or implied which extend beyond the description of the goods contained herein. Any description of this product is for the purpose of identifying it and shall not be deemed to create an express warranty.

**COBRA**  
*Anything's Possible*

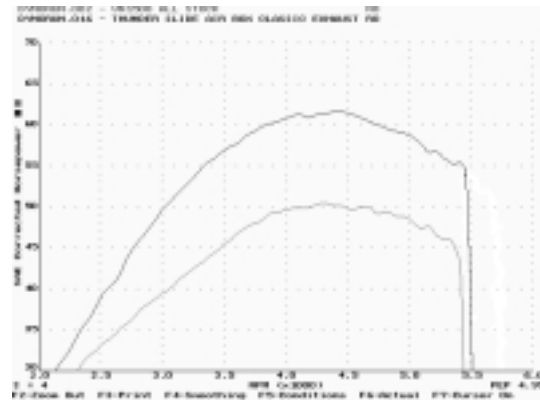
**92-4165**

U.S Models Only

1991-2001 Kawasaki VN1500 Vulcan

**Stage 1**

For mildly tuned machines using the stock airbox, with stock filter and Cobra Boulevard exhaust system



*This graph shows a typical gain with a Cobra jet kit.*

# WARNING

**NO SMOKING!  
 NO OPEN FLAME!  
 WHILE INSTALLING  
 YOUR DYNOJET KIT**

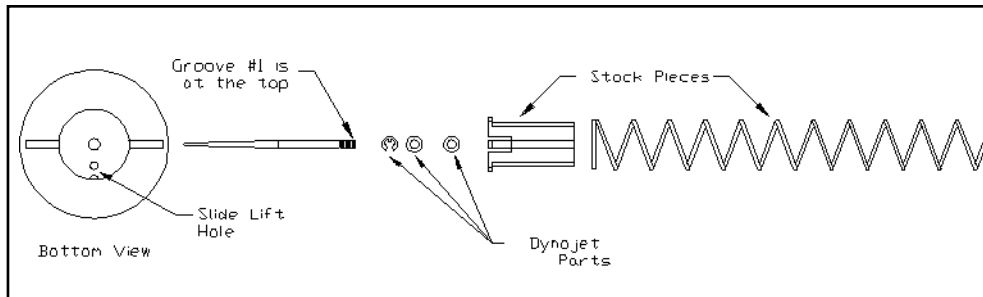
Parts List		
2	Main Jet	DJ108
2	Main Jet	DJ112
2	Main Jet	DJ160
2	Fuel Needles	DNO106
2	E-Clips	DE0001
4	Adjusting Washers	DW0001
2	Pilot Air Correctors	DCO251
1	Deceleration Jet Drill	DD #58
1	Plug Drill	DD #5/32
1	Screw	DS0001

\*For racing use only. Not for sale in the State of California.

## STAGE ONE INSTRUCTIONS

1. Remove vacuum slides from carbs. Remove stock needles and spacers, noting order of assembly (Fig.A).
2. Install the Cobra needles on groove #3 from the top. Use all stock spacers (Fig. A). Install the small Cobra washers above the E-clip (2 per needle). After installing the slides in the carbs be sure to check slide movement manually.
3. Remove the main jet and replace with the Cobra main jet provided. Use DJ112 with Slip-on exhaust at altitudes below 3000 ft. Use the DJ108 at altitudes above 3000 ft. Use the DJ160 main jets with the boulevard air box removal kit part no 06-0431. Be sure that the jet you are changing is the main jet.
4. Using the drill bit provided (DD #58) enlarge the deceleration jet (Fig. C) in the bell mouth of the carb. **NOTE:** We recommend that a pin vice is used to drill the deceleration jet **NOT** an electric drill motor and make sure that you do not drill too deep, in order to prevent damage to the carbs. Use grease on the drill bit when drilling and make sure to clean out all metal chips.
5. Install the pilot air jet correctors (DCO251) in the pilot air jet shown in Fig. C.
6. Locate the Fuel Mixture Plug (Fig. B). If you see a screw head at Fig. B then proceed to the adjusting procedure. With the 5/32 drill bit provided carefully drill through the plug. **NOTE:** The mixture screw is directly underneath this plug, be ready to pull back on the drill the instant you break through. Use screw provided to secure and remove this plug. Carefully turn the mixture screw clockwise until lightly seated, then back out 4.5 turns.

Fig. A



**COBRA**

**92-4165**

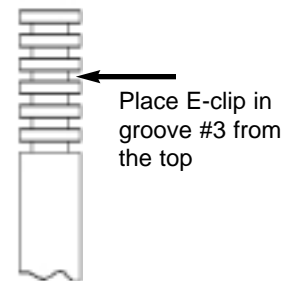


Fig. C

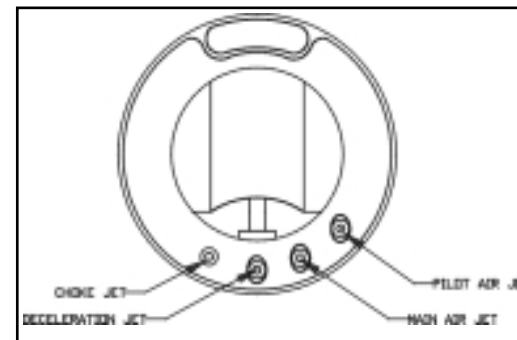


Fig. B

